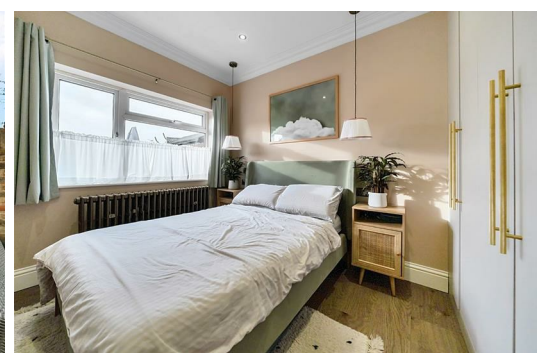




# HARDINGS



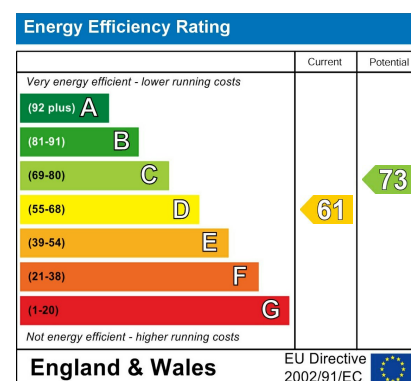
Duke Street  
Guide Price £375,000





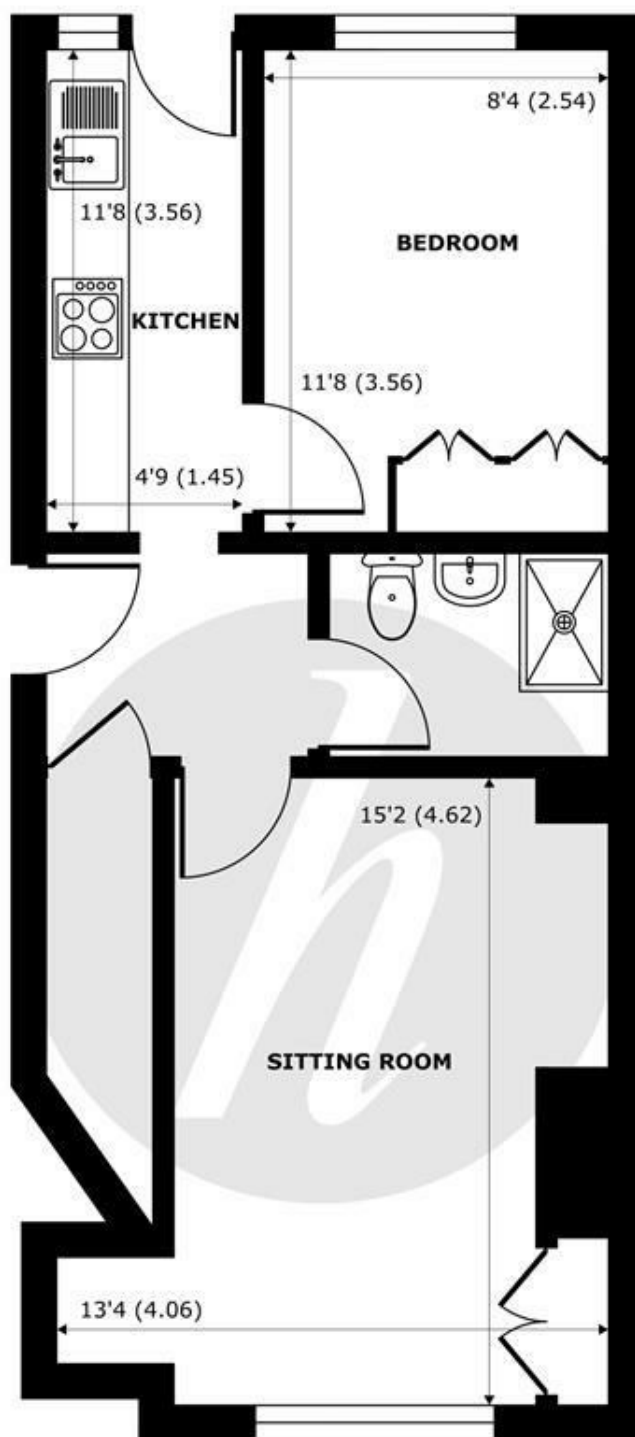
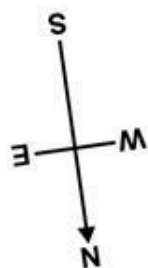


A charming and stylish 1 bedroom ground floor period maisonette located in a popular residential area in Windsor Town Centre, just a short walk to both railway stations with mainline connections to London (Waterloo & Paddington) and the vast array of bars and restaurants that Windsor has to offer. Featuring a superb south-facing courtyard garden perfect for 'al fresco' dining, the property has been refurbished and boasts exposed brickwork and period features.



## Features

- Ground Floor Maisonette
- Backing Onto Delightful Communal Greens
- Modern Integrated Kitchen
- Rear/Side Access
- Period Features
- Stylish Interior
- South-Facing Courtyard Garden
- Windsor Town Centre
- Exposed Brickwork
- Permit Parking



**FIRST FLOOR**  
abt 517 SQFT (48 SQMT)

## Duke Street, Windsor, SL4

Approximate Internal Area = 434 sq ft / 40.3 sq m

Approximate External Area = 517 sq ft / 48 sq m

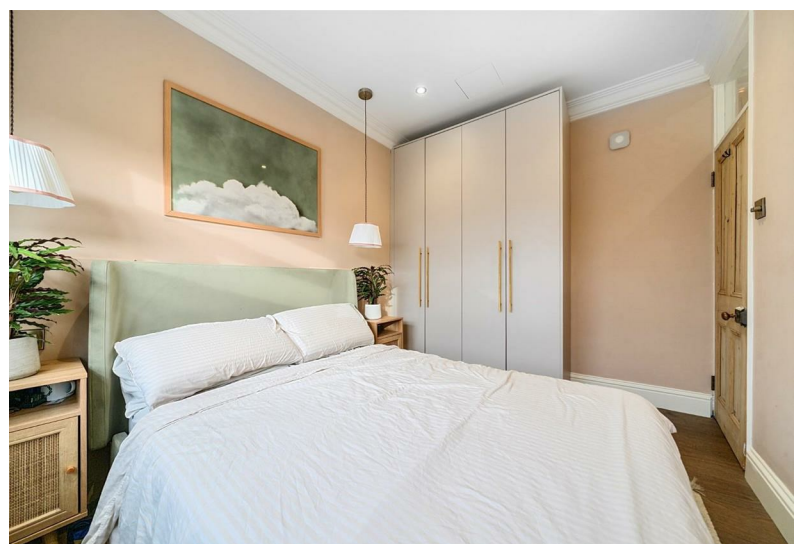
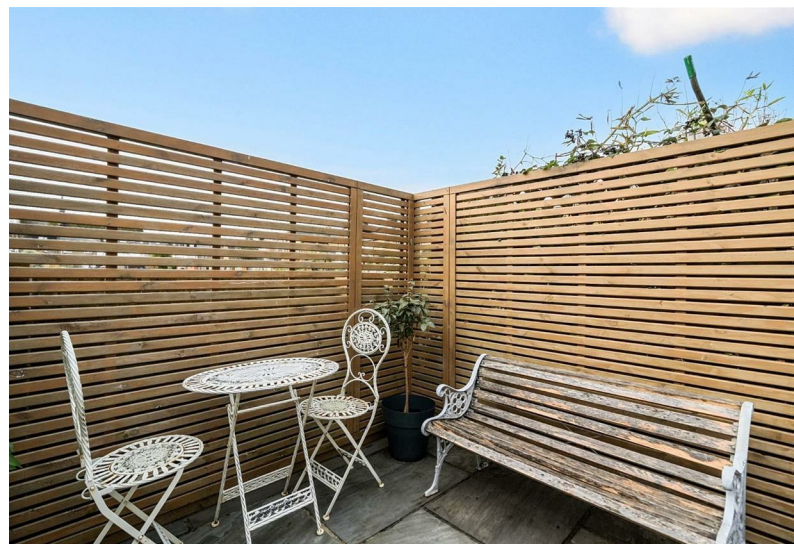
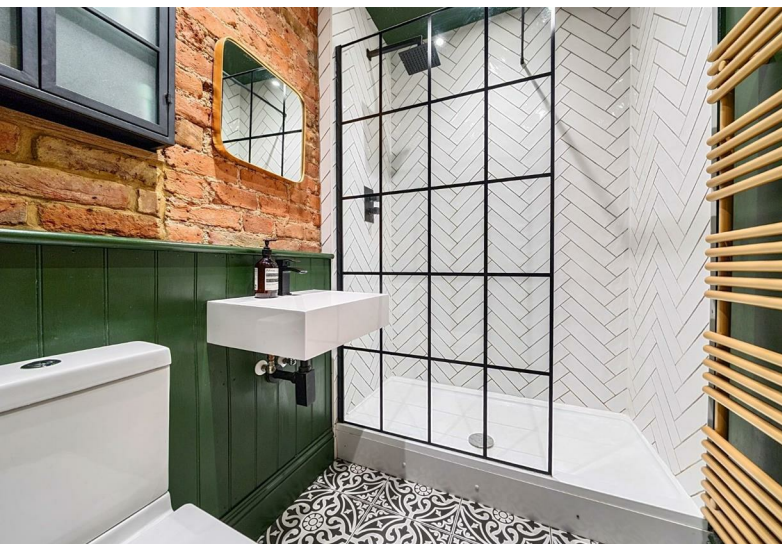
For identification only - Not to scale



Floor plan produced in accordance with RICS Property Measurement Standards incorporating International Property Measurement Standards (IPMS2 Residential). © nichecom 2023. Produced for Hardings. REF: 957392







11 High Street, Windsor, Berkshire, SL4 1LD,  
T: 01753 833 118 | E: [info@hardings.co.uk](mailto:info@hardings.co.uk)  
[www.hardings.co.uk](http://www.hardings.co.uk)

