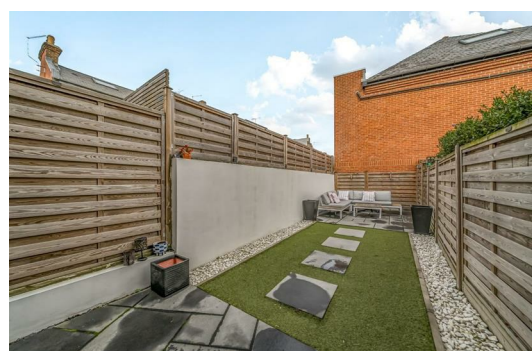




HARDINGS




Grove Road
Guide Price £975,000



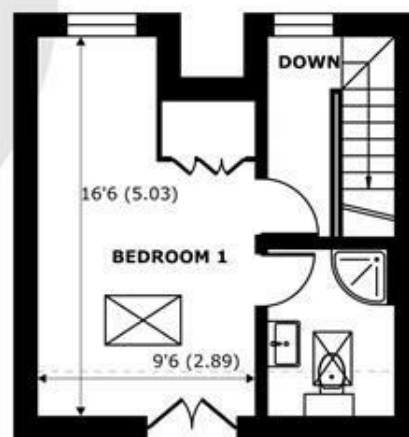
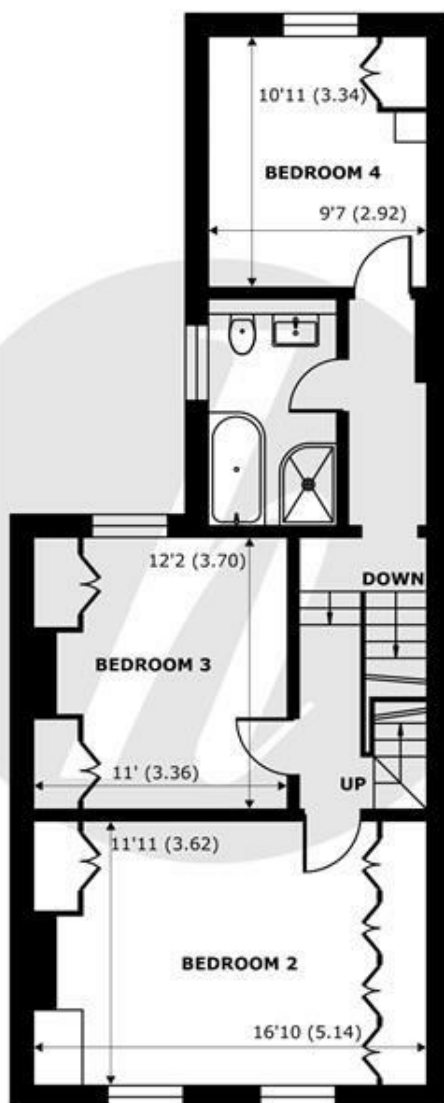
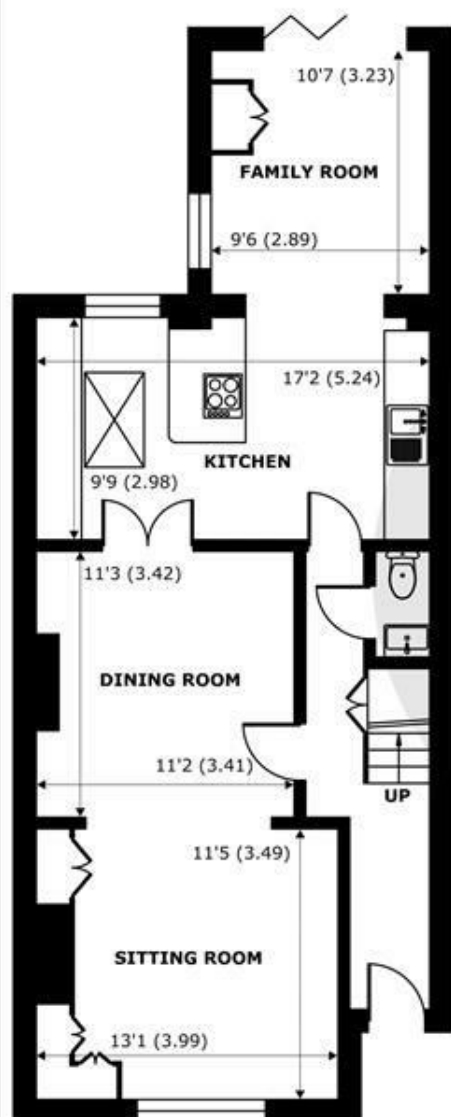


An attractive and beautifully presented four bedroom period villa with impressively high ceilings and wide rooms, located on a popular residential road, just a short walk to Windsor town centre, The Long Walk and mainline rail links to London. Remodelled and extended by the current owner, the property further benefits from cloakroom, kitchen/diner, loft conversion and landscaped garden.

Energy Efficiency Rating		
	Current	Potential
Very energy efficient - lower running costs		
(92 plus) A		
(81-91) B		
(69-80) C		
(55-68) D	70	80
(39-54) E		
(21-38) F		
(1-20) G		
Not energy efficient - higher running costs		
England & Wales	EU Directive 2002/91/EC 	

Features

- Four Bedroom Period Villa
- Short Walk to Windsor Town Centre, The Long Walk and Mainline British Rail Links to London
- Extended Kitchen with Partial Side Return
- Permit Parking
- Elegant Accommodation with High Ceilings and Period Features
- Double Reception Room
- Landscaped Garden
- Two Bathrooms & Cloakroom



Grove Road, Windsor, SL4

Approximate Internal Area = 1497 sq ft / 139 sq m
Approximate External Area = 1854 sq ft / 172.2 sq m
Limited Use Area(s) = 31 sq ft / 2.8 sq m

For identification only - Not to scale



Floor plan produced in accordance with RICS Property Measurement 2nd Edition, Incorporating International Property Measurement Standards (IPMS2 Residential). © nichecom 2025. Produced for Hardings. REF: 1380257





11 High Street, Windsor, Berkshire, SL4 1LD,
T: 01753 833 118 | E: info@hardings.co.uk
www.hardings.co.uk

