



HARDINGS




Longbourn
Guide Price £390,000





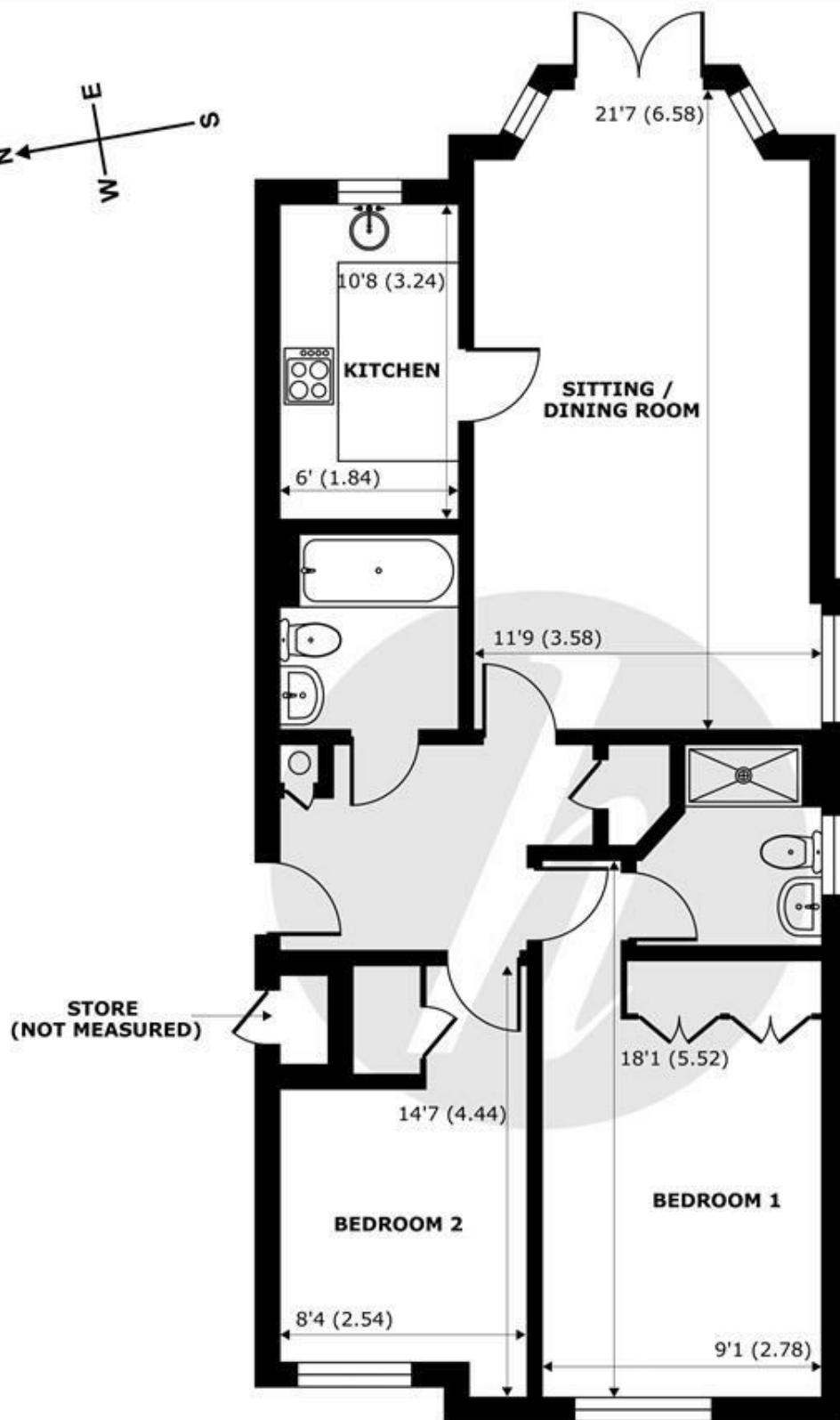
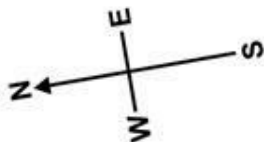
A superb two bedroom, two bathroom, ground floor purpose built apartment set in the beautiful grounds of the gated development of Longbourn. Located within a mile of Windsor town centre, local shops, restaurants and direct rail links to Windsor, the property benefits from uninterrupted views of open parkland, ample parking and direct access to a patio area. NO CHAIN.

Please note, some of the photographs used are CGI images for illustrative purposes.

Energy Efficiency Rating		
	Current	Potential
Very energy efficient - lower running costs		
(92 plus) A		
(81-91) B		
(69-80) C	74	76
(55-68) D		
(39-54) E		
(21-38) F		
(1-20) G		
Not energy efficient - higher running costs		
England & Wales	EU Directive 2002/91/EC 	

Features

- Ground Floor Apartment
- Direct Access to Patio and Gardens
- 21 x17 Living Room
- Ample Visitor Parking
- Long Lease: 221 Years
- 2 Bathrooms (1 x en-suite)
- Prestigious Gated Development
- Allocated Parking Space
- Stunning Parkground
- No Chain



GROUND FLOOR
abt 852 SQFT (69.2 SQMT)

Longbourn, Windsor, SL4

Approximate Internal Area = 745 sq ft / 69.2 sq m (excludes store)

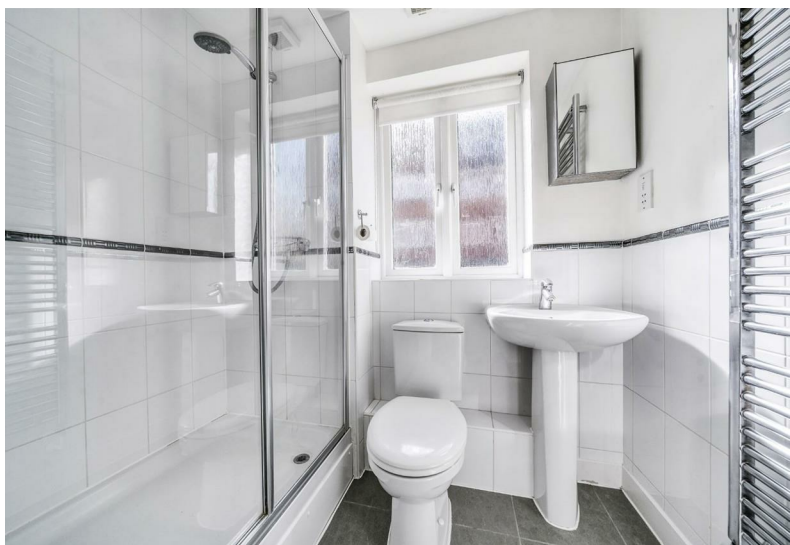
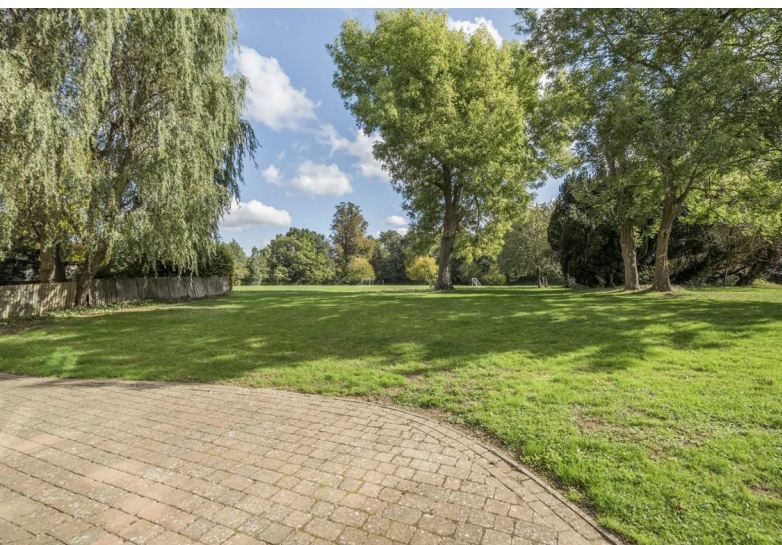
Approximate External Area = 852 sq ft / 79.1 sq m

For identification only - Not to scale



Floor plan produced in accordance with RICS Property Measurement 2nd Edition,
Incorporating International Property Measurement Standards (IPMS2 Residential). © nichecom 2025.
Produced for Hardings. REF: 1358360





11 High Street, Windsor, Berkshire, SL4 1LD,
T: 01753 833 118 | E: info@hardings.co.uk
www.hardings.co.uk

