



HARDINGS



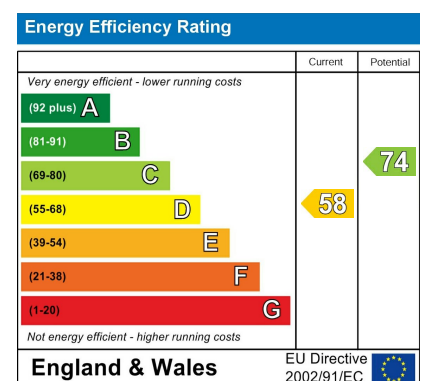
Knights Place
£1,750 PCM





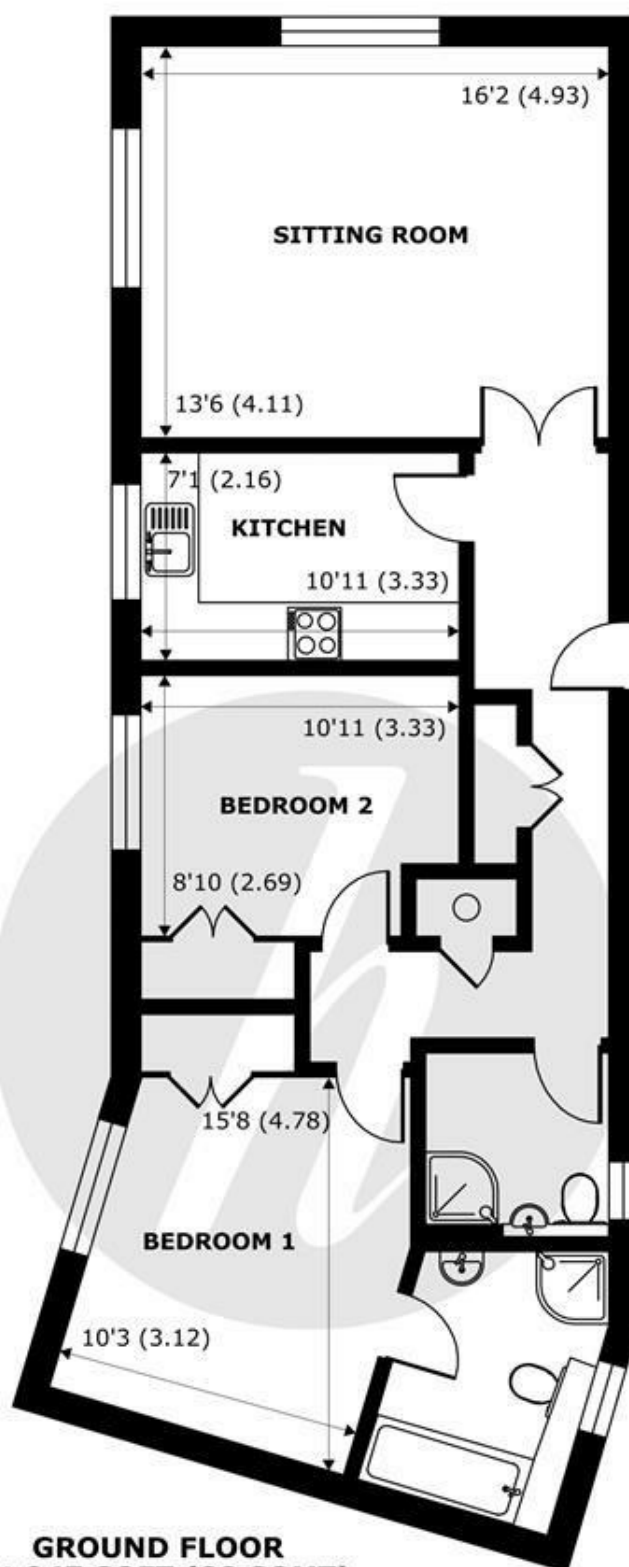
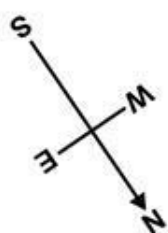
An immaculate 2 bedroom, 2 bathroom top floor apartment located in the popular development - Knights Place. Boasting Allocated parking, visitors parking and concierge, this development is highly sought after and situated moments from the Town Centre making it convenient for commuting to London.

EPC rating - D
Council tax band - E



Features

- 2 Bedroom, 2 Bathroom Top Floor apartment
- 2 Allocated Underground Parking Spaces
- Well Presented
- Modern Kitchen
- Concierge Service
- Lift
- Communal Gardens
- Central Windsor Location
- Light & Spacious Accommodation
- Visitor Parking on site



GROUND FLOOR
abt 947 SQFT (88 SQMT)

St. Leonards Road, Windsor, SL4

Approximate Internal Area = 810 sq ft / 75.2 sq m

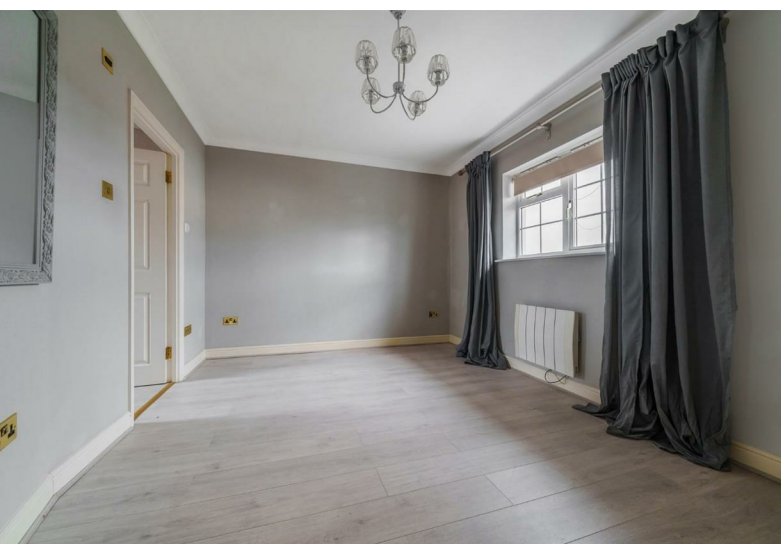
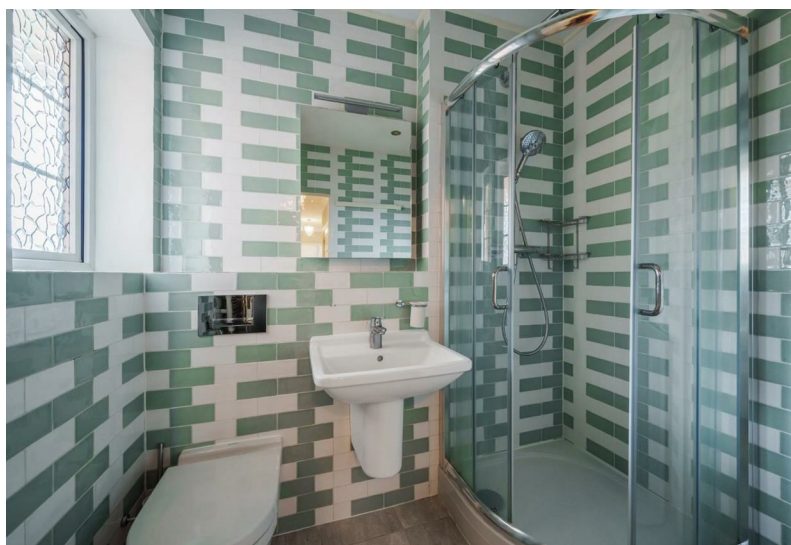
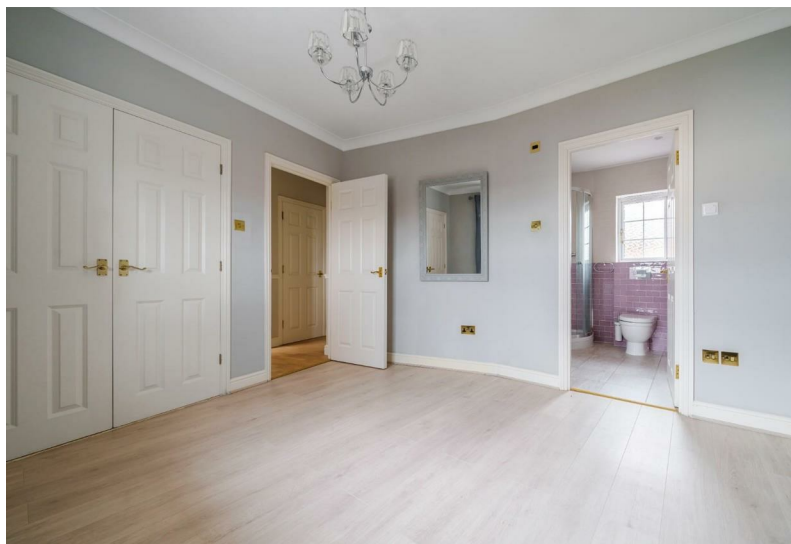
Approximate External Area = 947 sq ft / 88 sq m

For identification only - Not to scale



Floor plan produced in accordance with RICS Property Measurement Standards incorporating International Property Measurement Standards (IPMS2 Residential). © nichecom 2023. Produced for Hardings. REF: 953334





11 High Street, Windsor, Berkshire, SL4 1LD,
T: 01753 833 118 | E: info@hardings.co.uk
www.hardings.co.uk

