



HARDINGS




Bexley Street
Guide Price £525,000



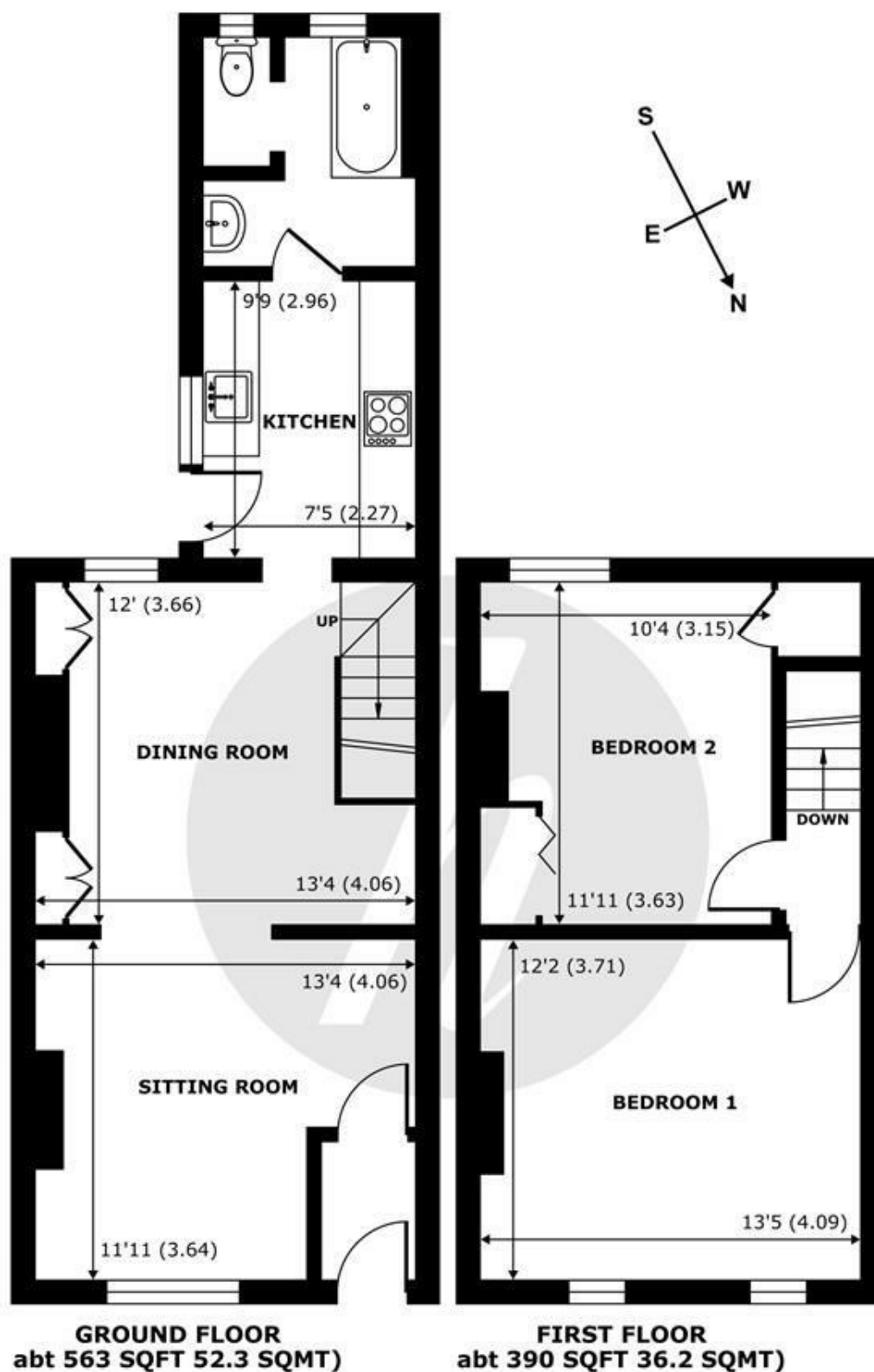


A brilliant opportunity to purchase a charming two bedroom property moments from Windsor Town Centre. The property would benefit from modernisation and potential to extend (STPP). Offering a double reception room, separate kitchen and a south facing private garden with rear access. Offered to the market chain free.

Energy Efficiency Rating		
	Current	Potential
<i>Very energy efficient - lower running costs</i>		
(92 plus) A		86
(81-91) B		
(69-80) C		
(55-68) D	56	
(39-54) E		
(21-38) F		
(1-20) G		
<i>Not energy efficient - higher running costs</i>		
England & Wales		EU Directive 2002/91/EC 

Features

- Two Bedroom Property
- Potential to Extend (STPP)
- Town Centre Location
- South Facing Garden
- Rear Access to Garden
- Double Reception Room
- No Onward Chain
- In Need of Modernisation Throughout



Bexley Street, Windsor, SL4

Approximate Internal Area = 794 sq ft / 73.7 sq m

Approximate External Area = 953 sq ft / 88.5 sq m

For identification only - Not to scale



Floor plan produced in accordance with RICS Property Measurement 2nd Edition, Incorporating International Property Measurement Standards (IPMS2 Residential). © nichecom 2025. Produced for Hardings. REF: 1305825





11 High Street, Windsor, Berkshire, SL4 1LD,
T: 01753 833 118 | E: info@hardings.co.uk
www.hardings.co.uk

