




Queens Road  
Asking Price £325,000





A beautifully presented two bedroom apartment, located in a sought after road, close to the town and all its amenities. The property comes with an open plan kitchen reception, allocated off street parking and no onward chain.

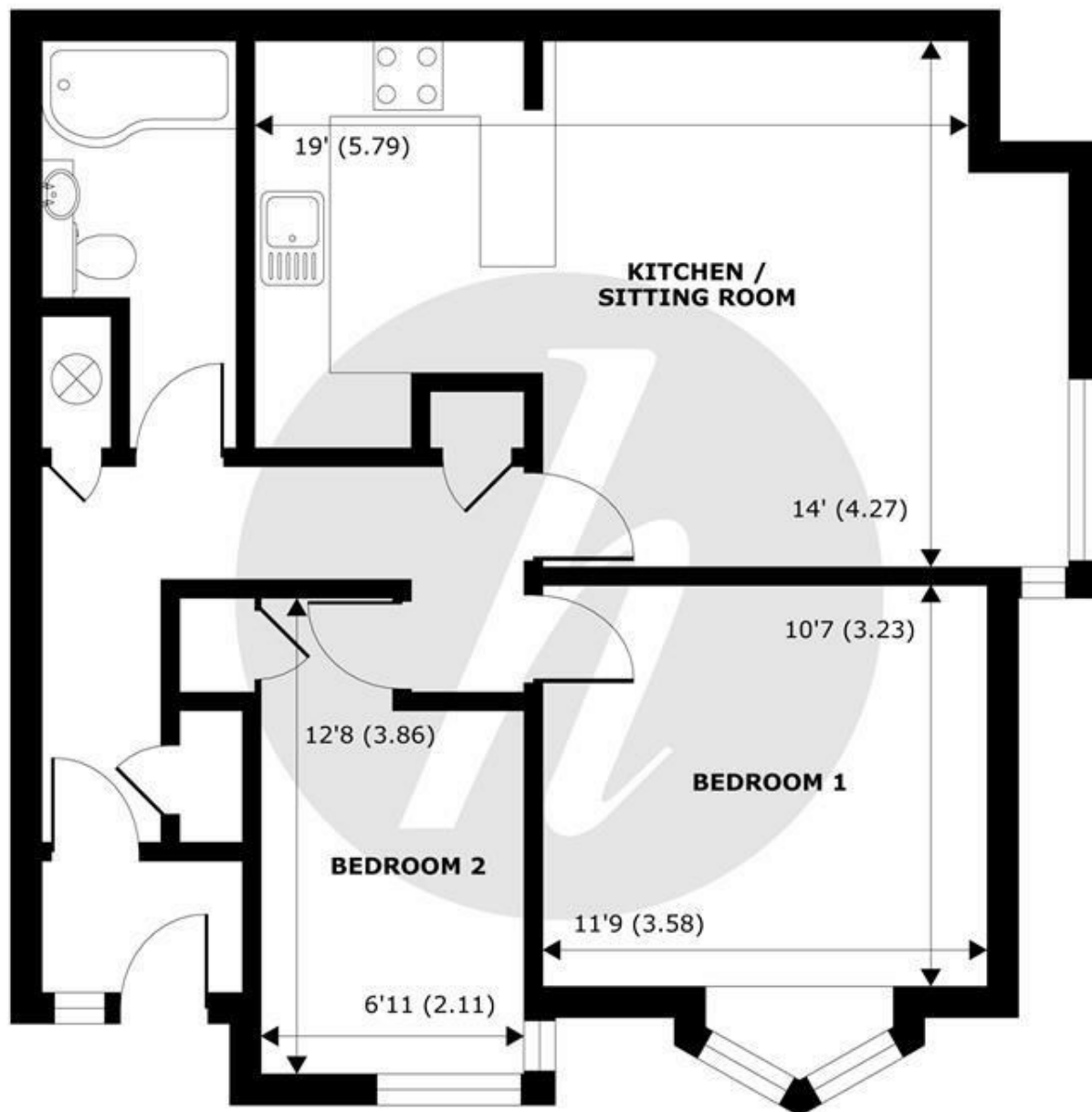
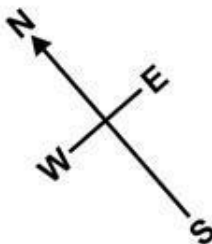
Energy Efficiency Rating		
	Current	Potential
Very energy efficient - lower running costs		
(92 plus) <b>A</b>		
(81-91) <b>B</b>		
(69-80) <b>C</b>		
(55-68) <b>D</b>	<b>62</b>	<b>78</b>
(39-54) <b>E</b>		
(21-38) <b>F</b>		
(1-20) <b>G</b>		
Not energy efficient - higher running costs		
<b>England &amp; Wales</b>	EU Directive 2002/91/EC 	

## Features

- Two bedroom apartment
- Well Presented Throughout
- Moments from Windsor Town Centre
- Tax band D & EPC D
- Share of Freehold
- Open Plan Living
- No Onward Chain
- Allocated Off Street Parking
- Ample Storage Throughout



NOT TO SCALE



**THIRD FLOOR**  
**abt 777 SQFT (72.2 SQMT)**

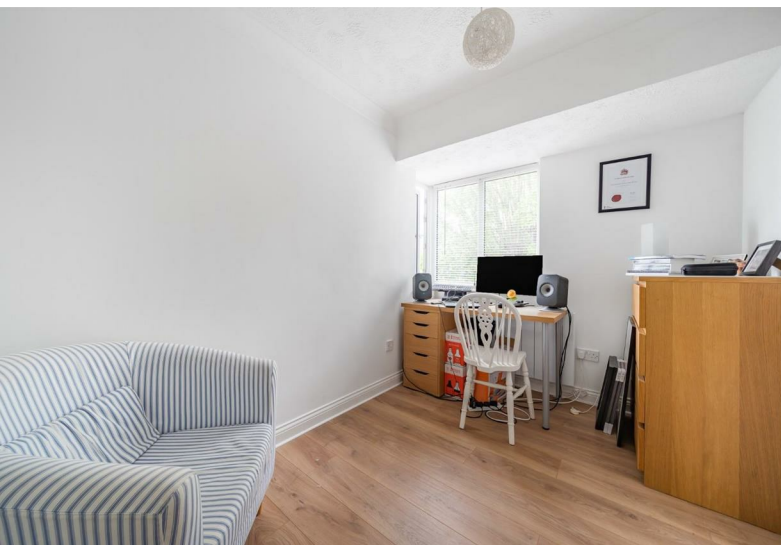
**APPROX. GROSS EXTERNAL FLOOR AREA 777 SQFT 72.2 SQM**

**Warwick Court, Windsor, SL4**



Whilst every attempt has been made to ensure the accuracy of the floor plan contained here, measurements of doors, windows and rooms are approximate and no responsibility is taken for any error, omission or misstatement. These plans are for representation purposes only as defined by RICS Code of Measuring Practice and should be used as such by any prospective purchaser. Specifically no guarantee is given on the total square footage of the property if quoted on this plan. Any figure given is for initial guidance only and should not be relied on as a basis of valuation.

Copyright nichecom.co.uk 2018 Produced for Hardings ref. 248011



11 High Street, Windsor, Berkshire, SL4 1LD,  
T: 01753 833 118 | E: [info@hardings.co.uk](mailto:info@hardings.co.uk)  
[www.hardings.co.uk](http://www.hardings.co.uk)

