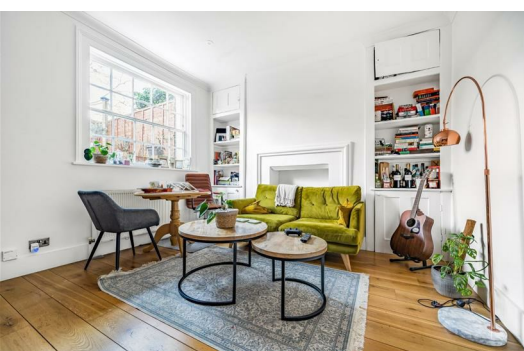




# HARDINGS



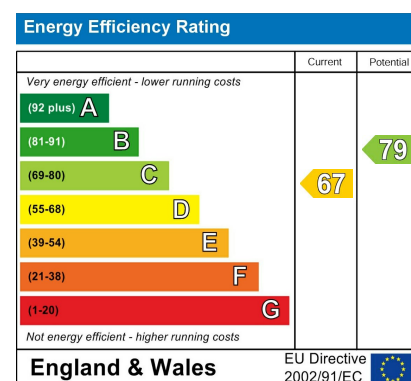
Claremont Road  
Price Guide £385,000





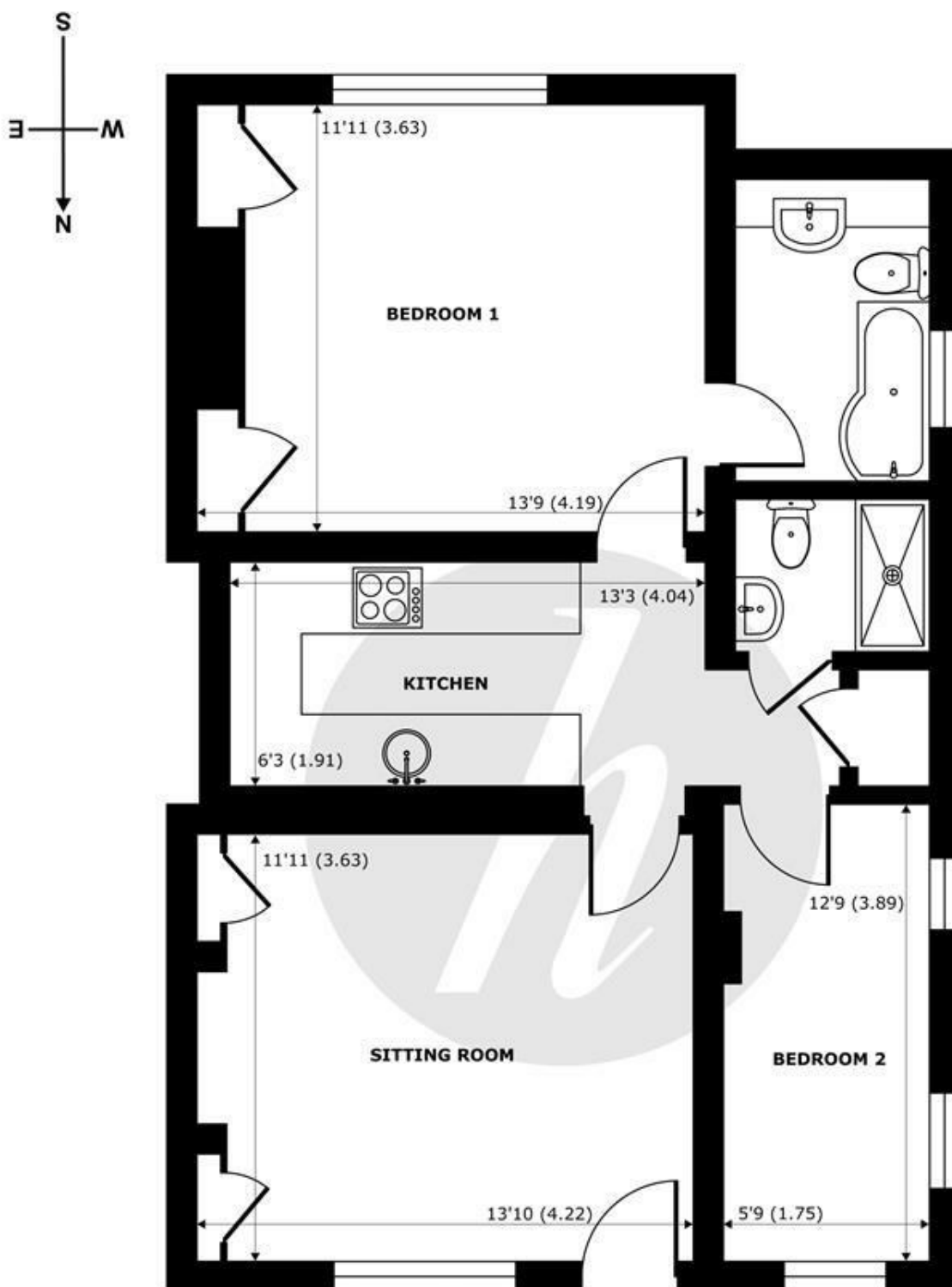


A beautifully presented garden apartment, forming part of a converted Victorian town house, situated in one of Windsor's most prestigious locations just moments' walk to Windsor's Town Centre and the mainline rail links to London (Paddington & Waterloo). This two bed, two bath conversion has side access to a private garden, and its own entrance. The property is share of freehold with no onward chain.



## Features

- Garden Maisonette within a Grade II Listed Building
- Two Bedroom
- Share of freehold
- Permit Parking
- No Onward Chain
- Prestigious Location
- Two Bathrooms
- Contemporary Interior
- Built in Storage
- Moments' from Windsor Town Centre



## Claremont Road, Windsor, SL4

Approximate Internal Area = 638 sq ft / 59 sq m

Approximate External Area = 730 sq ft / 68 sq m

For identification only - Not to scale

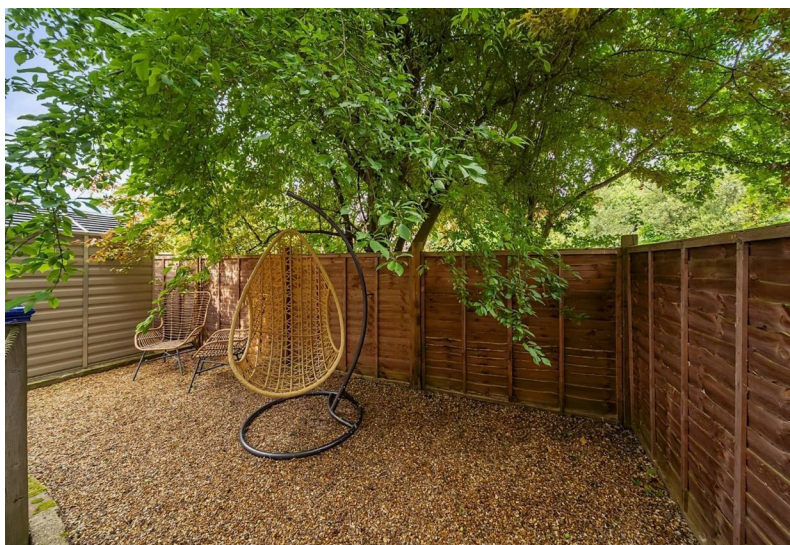
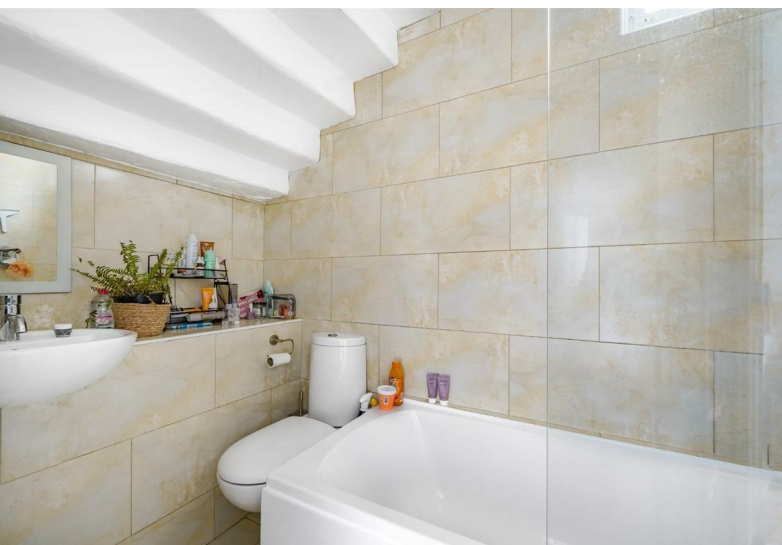
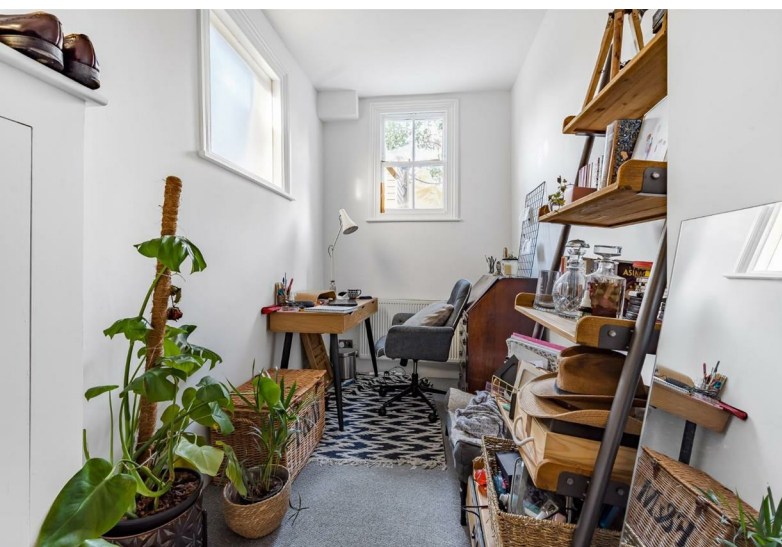


Certified  
Property  
Measurer

Floor plan produced in accordance with RICS Property Measurement Standards incorporating International Property Measurement Standards (IPMS2 Residential). © nichecom 2023. Produced for Hardings. REF: 933924







11 High Street, Windsor, Berkshire, SL4 1LD,  
T: 01753 833 118 | E: [info@hardings.co.uk](mailto:info@hardings.co.uk)  
[www.hardings.co.uk](http://www.hardings.co.uk)

