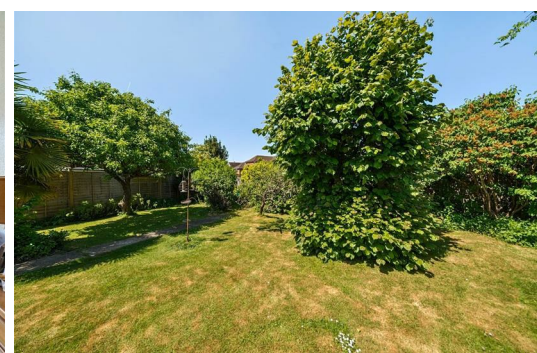




HARDINGS




York Road
Price Guide £775,000



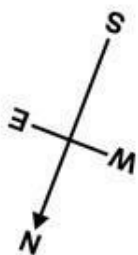


A three bedroom detached bungalow located on a good plot located in a popular residential area, just a short walk to Windsor town centre, local shops, restaurants and the catchment for excellent schools. In need of a full refurbishment throughout, the property can be extended and remodeled stpp and benefits further from a delightful south facing garden and driveway parking.

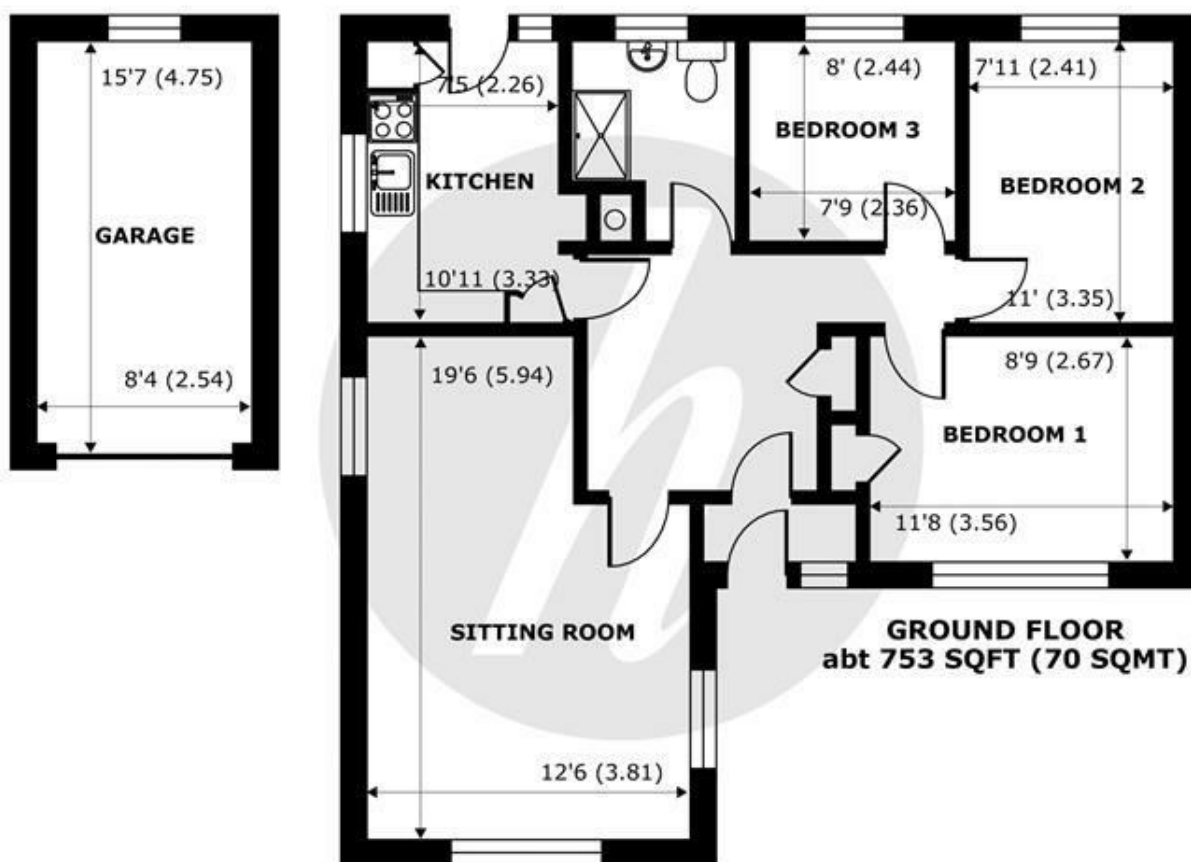
Energy Efficiency Rating		
	Current	Potential
Very energy efficient - lower running costs		
(92 plus) A		
(81-91) B		
(69-80) C		
(55-68) D		62
(39-54) E		
(21-38) F	27	
(1-20) G		
Not energy efficient - higher running costs		
England & Wales	EU Directive 2002/91/EC 	

Features

- Detached Bungalow
- Three Bedrooms
- Large Plot
- Quiet Residential Location
- Driveway Parking
- Potential to Extend (STPP)
- Front and Rear Garden
- No Onward Chain
- Short Distance to Windsor Town Centre & Local Amenties
- Catchment For Excellent Schools



Denotes restricted
head height



York Road, Windsor, SL4

Approximate Internal Area = 753 sq ft / 70 sq m (Exclude Garage & Outbuildings)

Approximate External Area = 882 sq ft / 82 sq m (Exclude Garage & Outbuildings)

Garage = 129 sq ft / 12 sq m

For identification only - Not to scale



Floor plan produced in accordance with RICS Property Measurement 2nd Edition,
Incorporating International Property Measurement Standards (IPMS2 Residential). © nichecom 2025.
Produced for Hardings. REF: 1295320





11 High Street, Windsor, Berkshire, SL4 1LD,
T: 01753 833 118 | E: info@hardings.co.uk
www.hardings.co.uk

