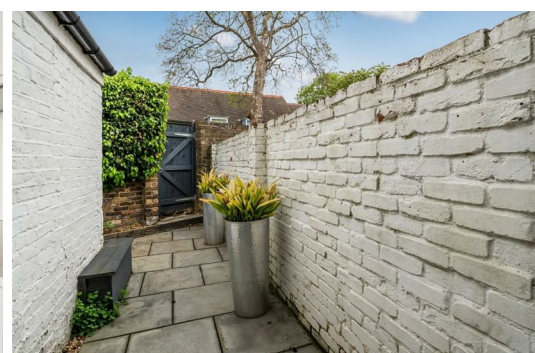




HARDINGS




Bexley Street
Offers In The Region Of £475,000





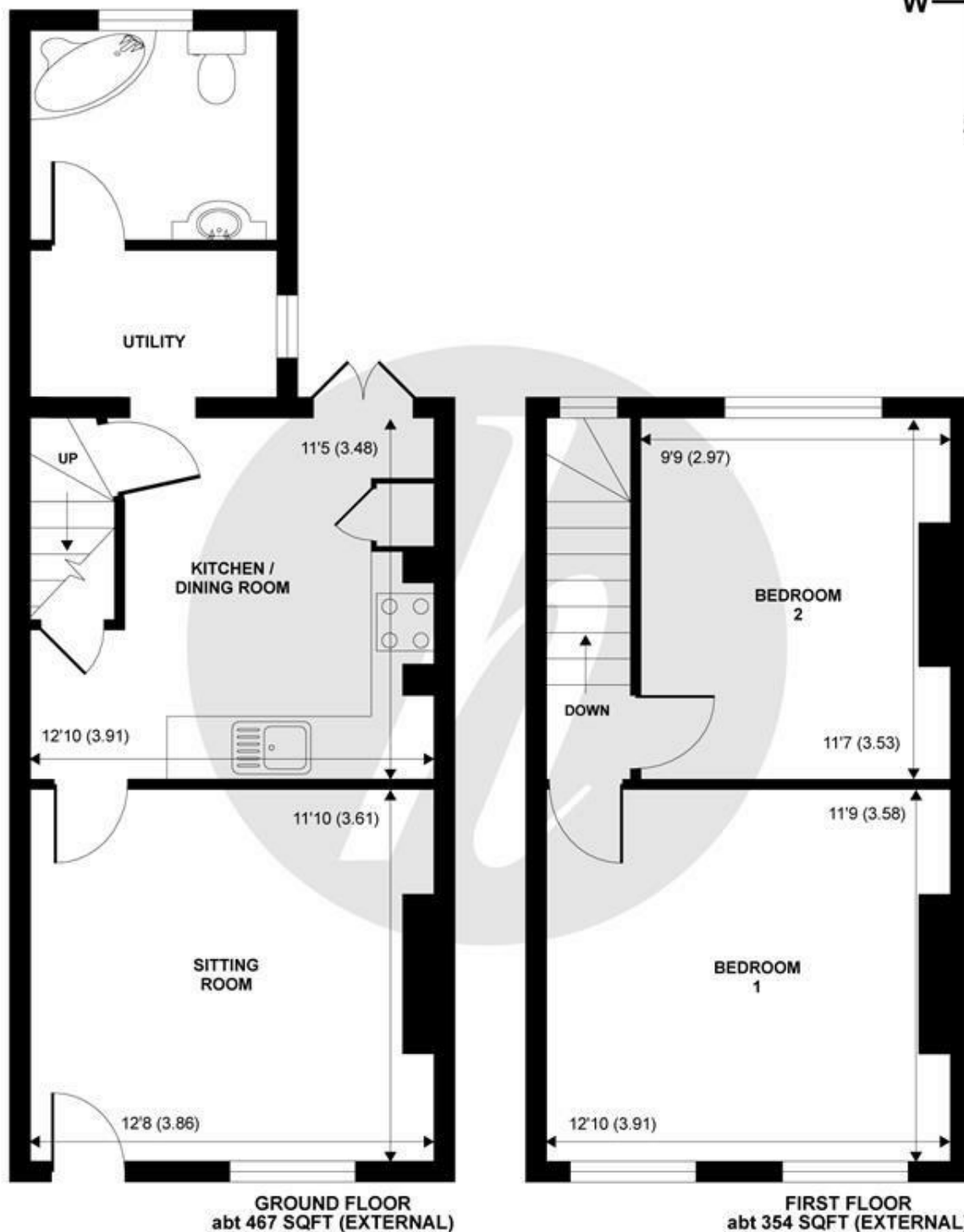
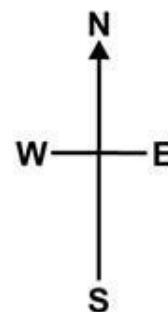
A beautifully renovated two bedroom Victorian terraced cottage situated on a sought after road in Windsor town centre, just a short walk from the restaurants, shops & bars and mainline railway stations. The property features bright reception, remodelled kitchen/dining room, utility and courtyard garden. It further benefits from potential to extend subject to the necessary planning permissions. No onward chain.

Energy Efficiency Rating		
	Current	Potential
Very energy efficient - lower running costs		
(92 plus) A		81
(81-91) B		
(69-80) C		
(55-68) D	58	
(39-54) E		
(21-38) F		
(1-20) G		
Not energy efficient - higher running costs		
England & Wales		EU Directive 2002/91/EC 

Features

- Victorian Terrace
- Ample on-street Parking
- Contemporary Interior
- Utility Area
- No Onward Chain
- Sought after Town Centre Location
- Courtyard Garden
- 2 Double Bedrooms
- Period Features

NOT TO SCALE

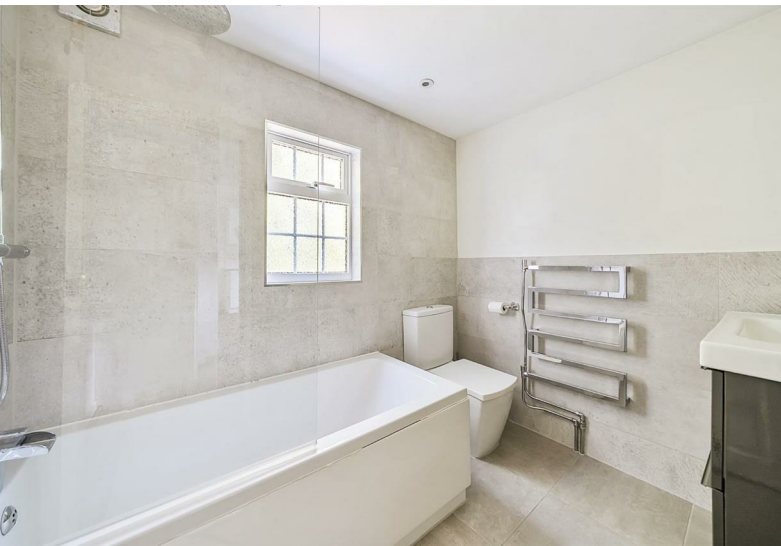


Bexley Street Windsor Berkshire SL4



Whilst every attempt has been made to ensure the accuracy of the floor plans contained here, measurements of doors, windows and rooms are approximate and no responsibility is taken for any error, omission or mis-statement. These plans are for representation purposes only as defined by RICS Code of Measuring Practice and should be used as such by any prospective purchaser. The services, systems and appliances listed in this specification have not been tested by Hardings and no guarantee as to their operating ability or their efficiency can be given.

Copyright nichecom.co.uk 2010 Produced for Hardings ref. 82461



11 High Street, Windsor, Berkshire, SL4 1LD,
T: 01753 833 118 | E: info@hardings.co.uk
www.hardings.co.uk

