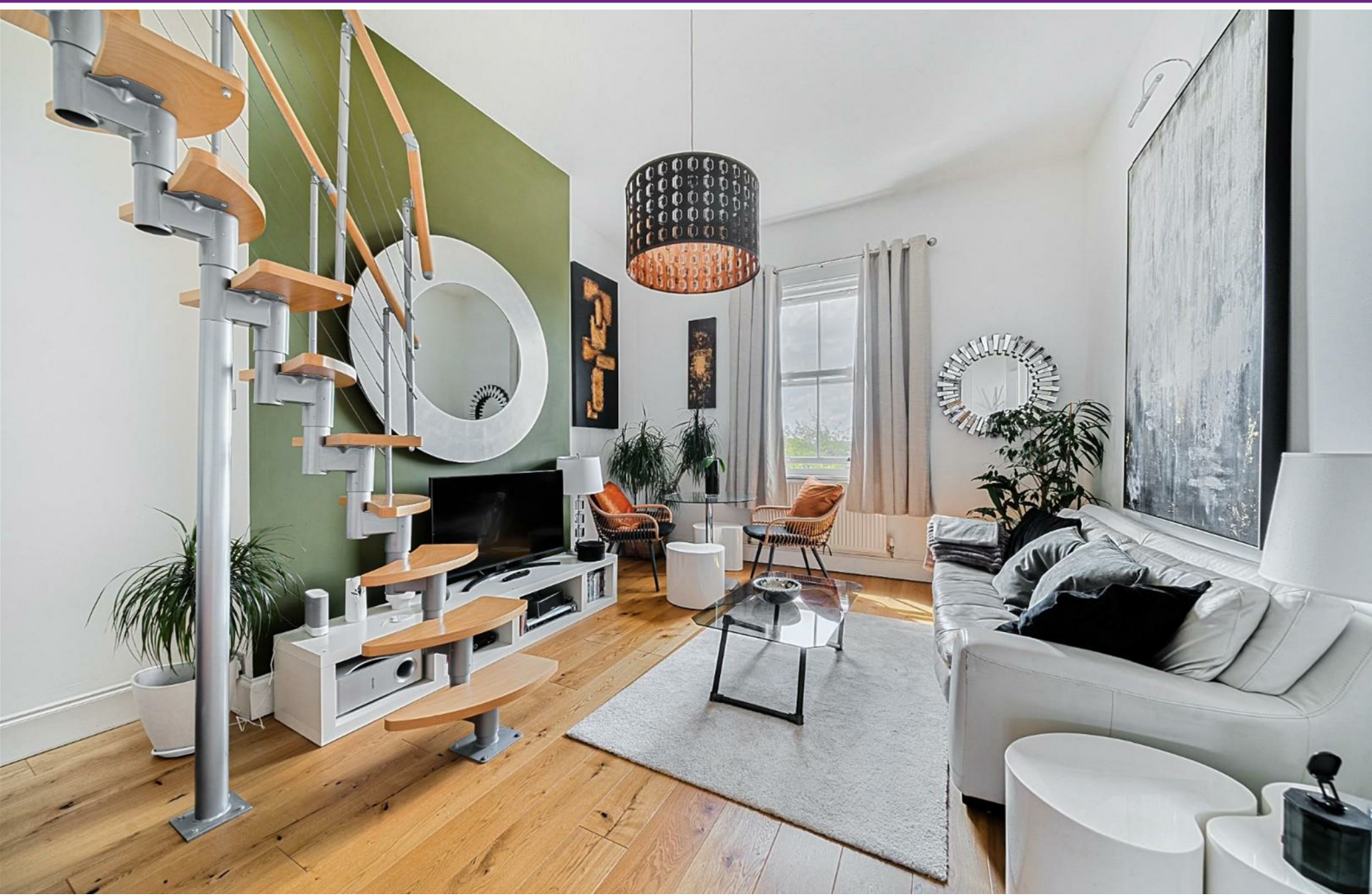




# HARDINGS



Grove Road  
Price Guide £500,000







A beautifully presented and characterful one-bedroom flat, with the added bonus of a versatile second room—ideal as a guest bedroom, home office, or study. Perfectly positioned on the highly sought-after Grove Road, the property enjoys a prime location just a short walk from Windsor Town Centre.

The flat features a separate, modern kitchen with integrated appliances, a spacious and light-filled reception/dining room, and a newly fitted four-piece bathroom suite. The principal bedroom offers generous built-in storage and is finished with elegant wood flooring, which extends throughout the property.

Offered to the market with no onward chain.

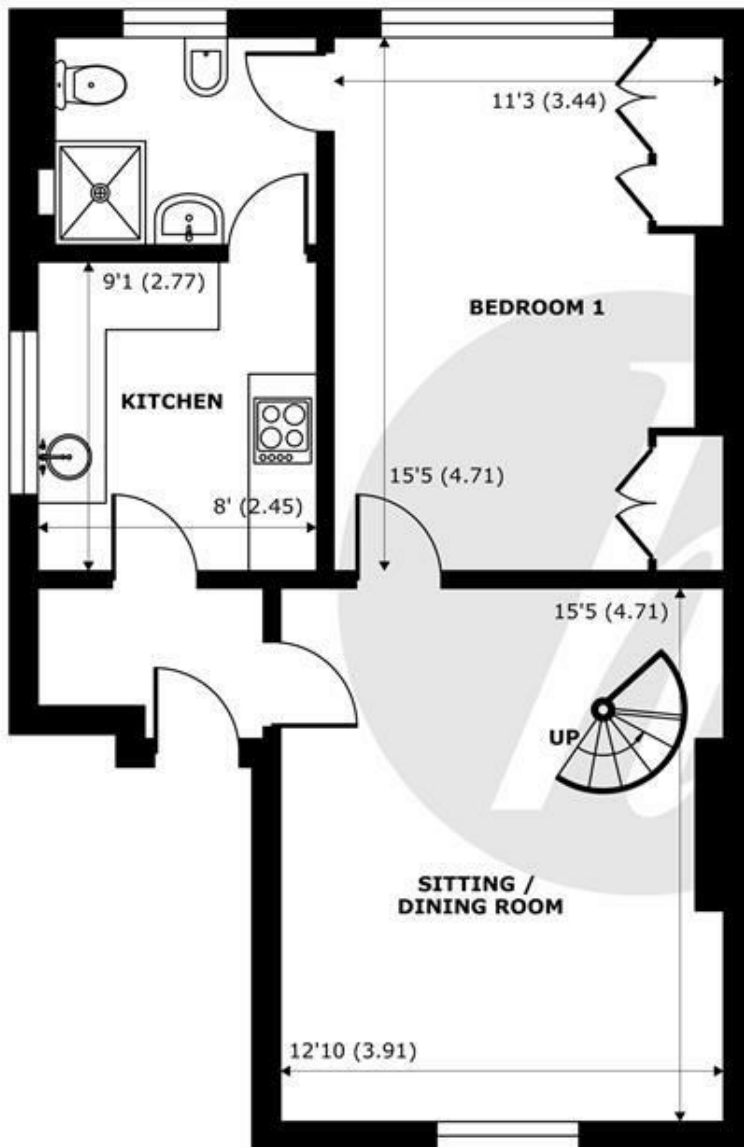
Energy Efficiency Rating		
	Current	Potential
Very energy efficient - lower running costs		
(92 plus) A		
(81-91) B		
(69-80) C		
(55-68) D	65	70
(39-54) E		
(21-38) F		
(1-20) G		
Not energy efficient - higher running costs		
England & Wales		EU Directive 2002/91/EC

## Features

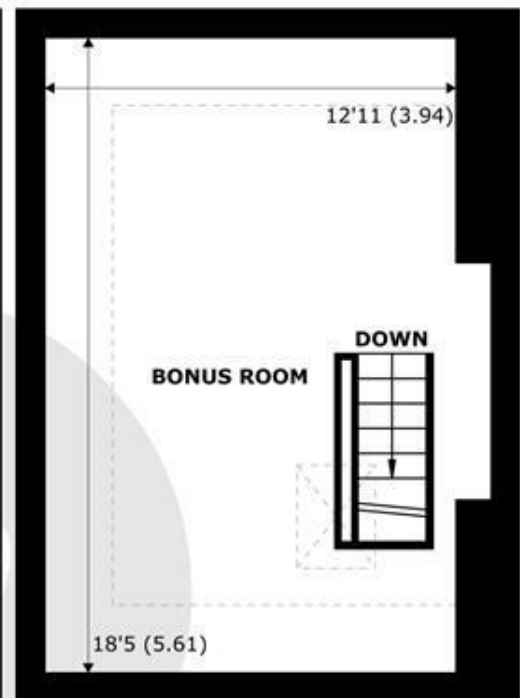
- One Bedroom Property
- High Ceilings & Period Features Throughout
- Modern Integrated Kitchen
- Sought After Location
- Additional Bonus Room
- Immaculate Finish
- Moments from Windsor Town Centre
- No Onward Chain



Denotes restricted  
head height



**SECOND FLOOR**  
abt 629 SQFT (58.4 SQMT)



**THIRD FLOOR**  
abt 292 SQFT (27.1 SQMT)

## Grove Road, Windsor, SL4

Approximate Internal Area = 693 sq ft / 64.3 sq m

Approximate External Area = 921 sq ft / 85.5 sq m

Limited Use Area(s) = 87 sq ft / 8 sq m

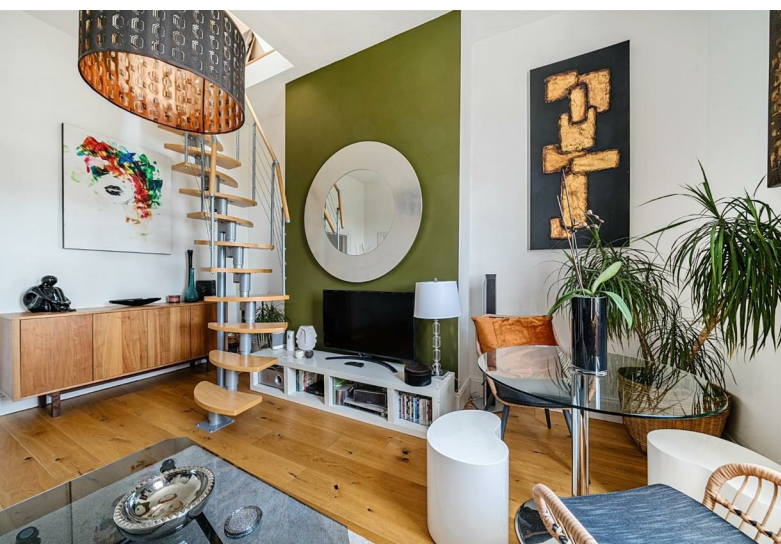
For identification only - Not to scale



Floor plan produced in accordance with RICS Property Measurement 2nd Edition,  
Incorporating International Property Measurement Standards (IPMS2 Residential). © nichecom 2025.  
Produced for Hardings. REF: 1280795







11 High Street, Windsor, Berkshire, SL4 1LD,  
T: 01753 833 118 | E: [info@hardings.co.uk](mailto:info@hardings.co.uk)  
[www.hardings.co.uk](http://www.hardings.co.uk)

