



HARDINGS




Regent Court
£1,750 PCM





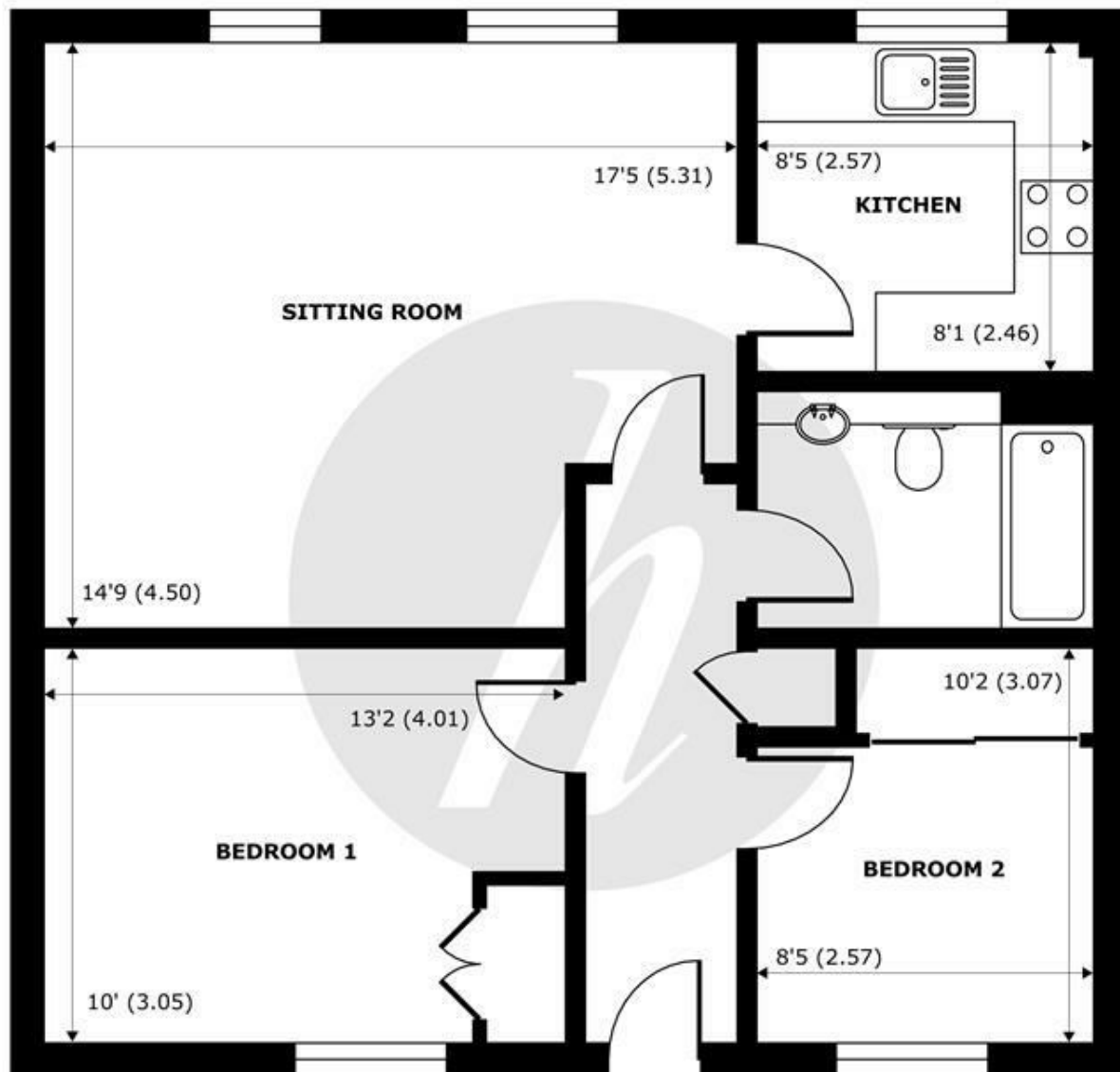
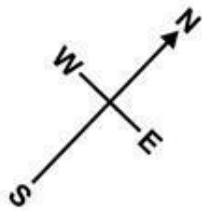
A smart two bedroom, first floor apartment in a sought after gated development located in Windsor town centre. Close to both stations providing easy access to either Paddington or Waterloo and comes with allocated parking.

Offered unfurnished, Available Now.

Energy Efficiency Rating		
	Current	Potential
Very energy efficient - lower running costs		
(92 plus) A		
(81-91) B	80	80
(69-80) C		
(55-68) D		
(39-54) E		
(21-38) F		
(1-20) G		
Not energy efficient - higher running costs		
England & Wales	EU Directive 2002/91/EC 	

Features

- Two bedroom apartment
- Modern finish
- One allocated parking space
- Two double bedrooms
- Tax Band E & EPC C
- Well-presented throughout
- Secure gated development
- Town centre location
- Offered unfurnished
- Available now



FIRST FLOOR
abt 760 SQFT (70.6 SQMT)

Regent Court, Sheet Street, Windsor, SL4

Approximate Internal Area = 671 sq ft / 62.3 sq m

Approximate External Area = 760 sq ft / 70.6 sq m

For identification only - Not to scale



Floor plan produced in accordance with RICS Property Measurement Standards incorporating International Property Measurement Standards (IPMS2 Residential). © nichecom 2021. Produced for Hardings. REF: 730160





11 High Street, Windsor, Berkshire, SL4 1LD,
T: 01753 833 118 | E: info@hardings.co.uk
www.hardings.co.uk

