



# HARDINGS



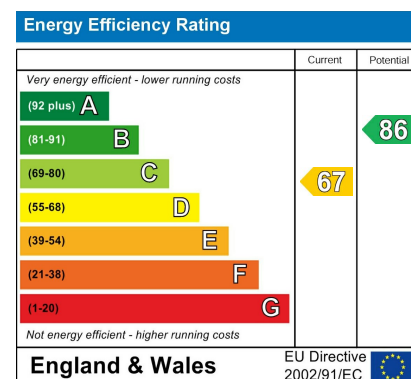
Oxford Road  
£1,750 PCM





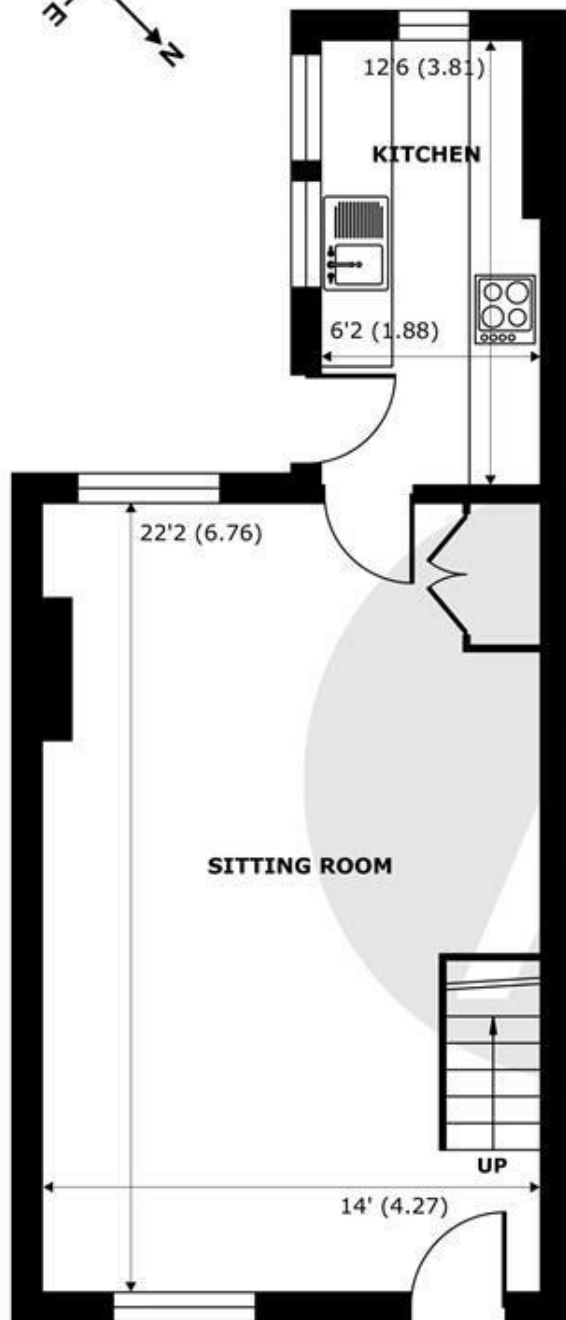
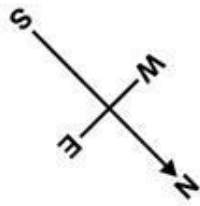


A beautifully presented Victorian terraced house situated in one of Windsor's most popular residential roads in the heart of the town centre. Boasting 2 double bedrooms, bathroom, open plan sitting and dining room and separate kitchen. Permit parking available, unfurnished.

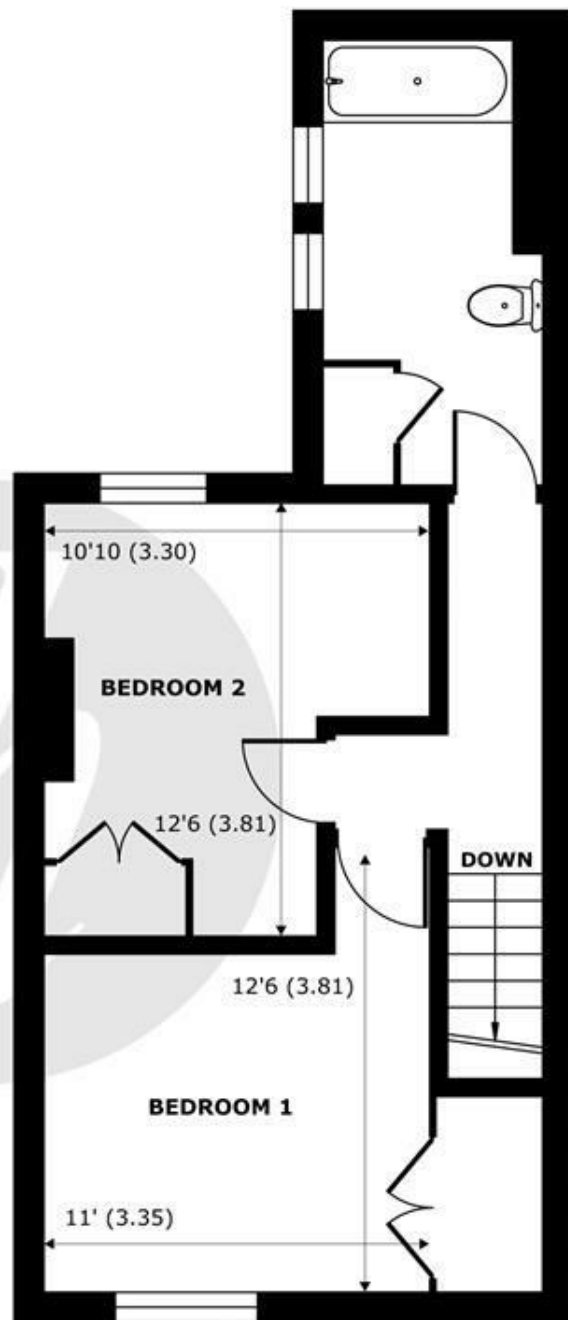


## Features

- Two Bedrooms
- Carpeted throughout
- Separate Kitchen
- Walking distance to Windsor and Eton Central Station
- Permit Parking available
- Recently redecorated
- Private rear garden
- Walking distance to the Town Centre
- Spacious bathroom
- Available Now



**GROUND FLOOR**  
abt 475 SQFT (44.1 SQMT)



**FIRST FLOOR**  
abt 475 SQFT (44.1 SQMT)

## Oxford Road, Windsor, SL4

Approximate Internal Area = 782 sq ft / 72.6 sq m  
Approximate External Area = 950 sq ft / 88.2 sq m

For identification only - Not to scale



Floor plan produced in accordance with RICS Property Measurement Standards incorporating International Property Measurement Standards (IPMS2 Residential). © nichecom 2024. Produced for Hardings. REF: 1154180.







11 High Street, Windsor, Berkshire, SL4 1LD,  
T: 01753 833 118 | E: [info@hardings.co.uk](mailto:info@hardings.co.uk)  
[www.hardings.co.uk](http://www.hardings.co.uk)

