



HARDINGS



Alma Road
£1,350 PCM

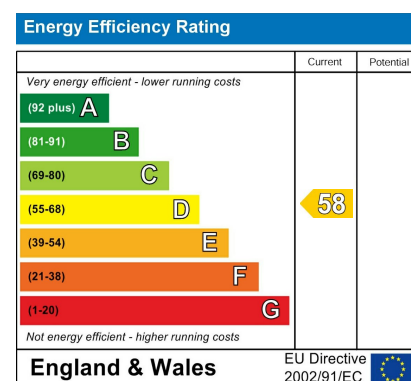




Located in Alma Road, Windsor, this apartment is within close proximity of the Town Centre and transport links to Central London. Situated on the first floor and comprising of two bedrooms, modern tiled bathroom, spacious lounge and separate kitchen.

This apartment benefits from off-street parking for one car.

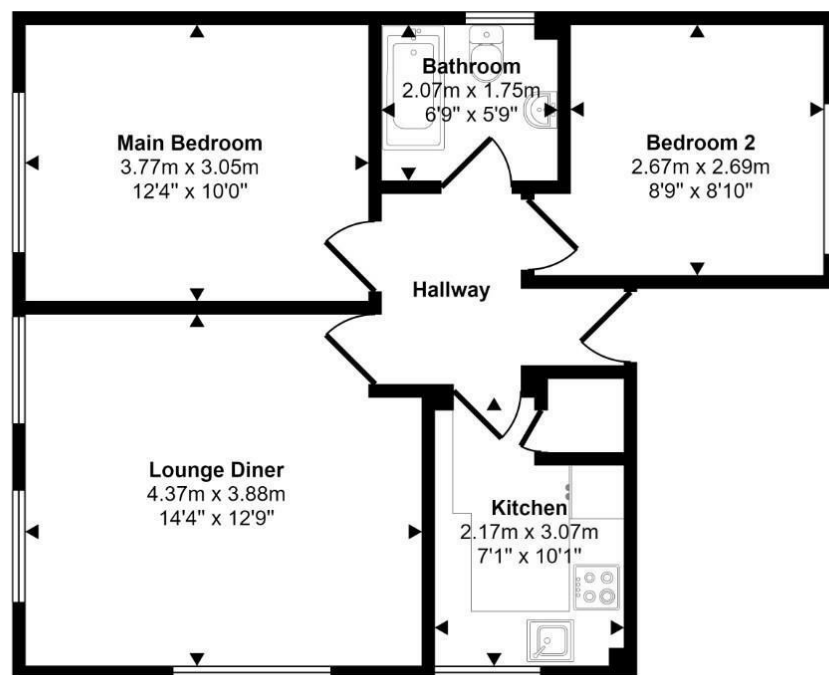
Available immediately, offered unfurnished.



Features

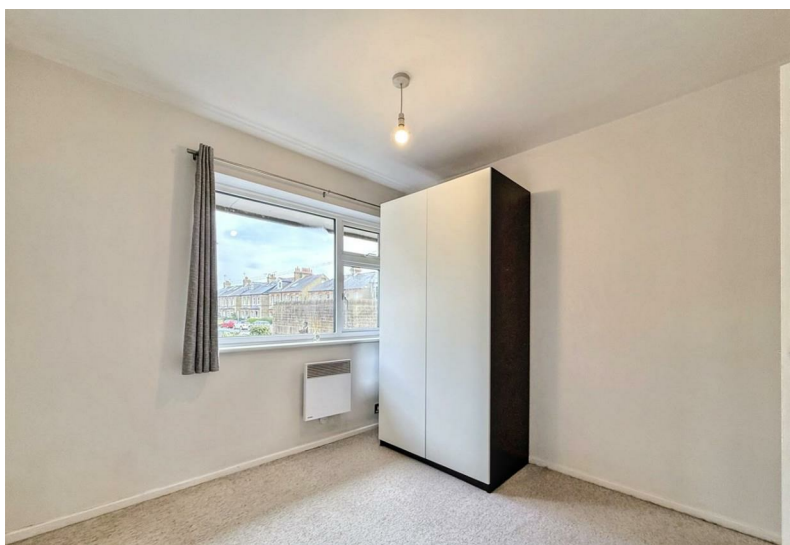
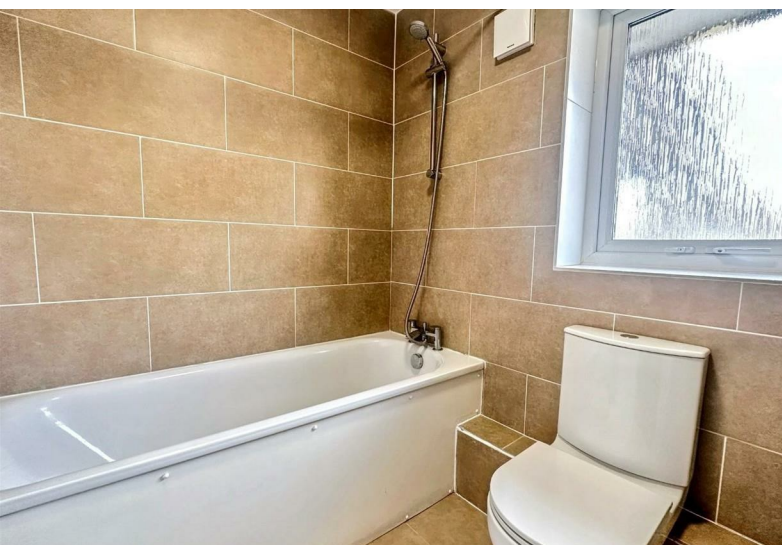
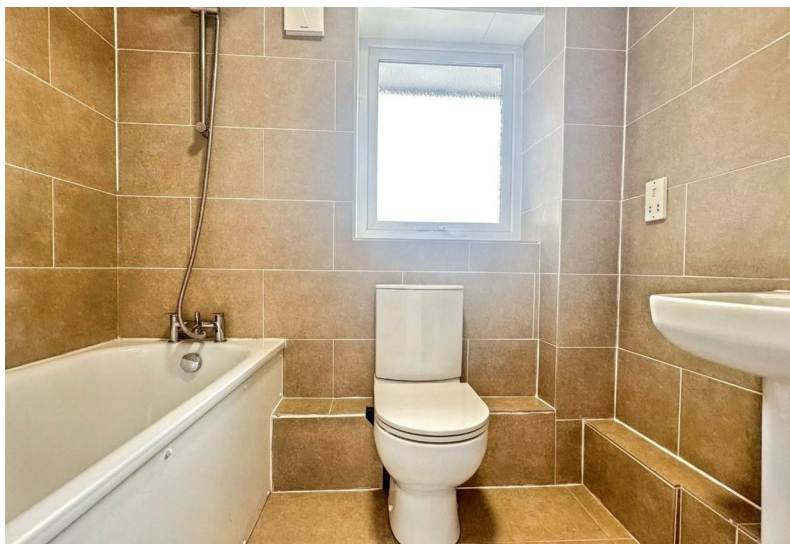
- First Floor Apartmet
- Separate Kitchen
- Two bedrooms
- Close proximity to Windsor Town Centre
- Residential Street
- Off-street parking for one car
- White goods included
- Spacious living room
- Transport Links to Central London
- Offered Unfurnished

Approx Gross Internal Area
53 sq m / 573 sq ft



Floorplan

This floorplan is only for illustrative purposes and is not to scale. Measurements of rooms, doors, windows, and any items are approximate and no responsibility is taken for any error, omission or mis-statement. Icons of items such as bathroom suites are representations only and may not look like the real items. Made with Made Snappy 360.



11 High Street, Windsor, Berkshire, SL4 1LD,
T: 01753 833 118 | E: info@hardings.co.uk
www.hardings.co.uk

