



HARDINGS



High Street
£1,900 PCM





Nestled in the charming town of Eton, this delightful apartment situated on the High Street offers a unique blend of historical character and modern living. Spanning approximately 710 square feet, this home is both cosy and functional, making it an ideal choice for individuals or small families.

Eton is renowned for its picturesque streets and vibrant community, offering a variety of shops, cafes, and cultural attractions just a stone's throw away. The proximity to the River Thames adds to the charm, providing opportunities for leisurely walks and outdoor activities.

This home boasts a large reception room, separate kitchen and modern bathroom. There are two double bedrooms, one offering scenic views of the river and Windsor Castle.

This property comes with one allocated parking space close by and is offered furnished.

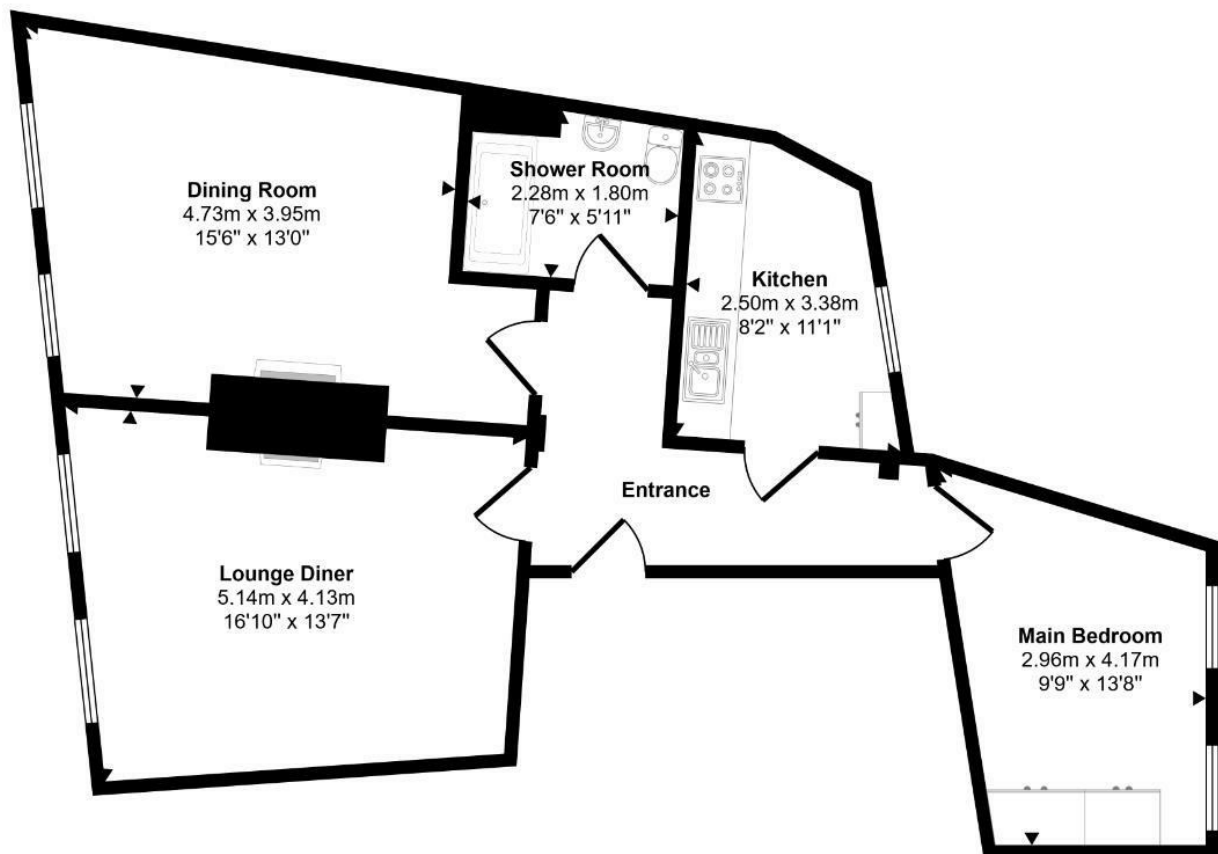
Available Now.

Features

- River and Castle Views
- Two double bedrooms
- Spacious Lounge
- One allocated parking space
- Fitted Wardobes in Master bedroom
- Situated on Eton High Street
- Separate Kitchen
- Offered Furnished
- Walk-in shower
- Available Now

Energy Efficiency Rating		
	Current	Potential
Very energy efficient - lower running costs		
(92 plus) A		
(81-91) B		
(69-80) C		
(55-68) D	61	
(39-54) E		
(21-38) F		
(1-20) G		
Not energy efficient - higher running costs		
England & Wales	EU Directive 2002/91/EC	

Approx Gross Internal Area
67 sq m / 726 sq ft



Floorplan

This floorplan is only for illustrative purposes and is not to scale. Measurements of rooms, doors, windows, and any items are approximate and no responsibility is taken for any error, omission or mis-statement. Icons of items such as bathroom suites are representations only and may not look like the real items. Made with Made Snappy 360.



11 High Street, Windsor, Berkshire, SL4 1LD,
T: 01753 833 118 | E: info@hardings.co.uk
www.hardings.co.uk

