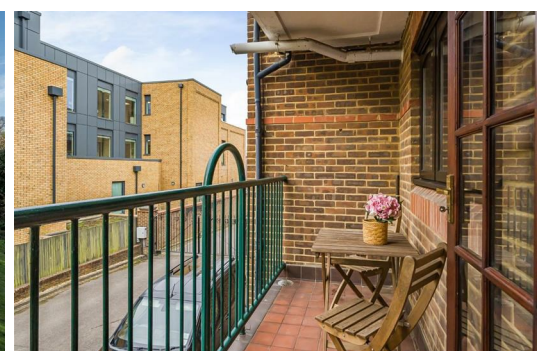




HARDINGS

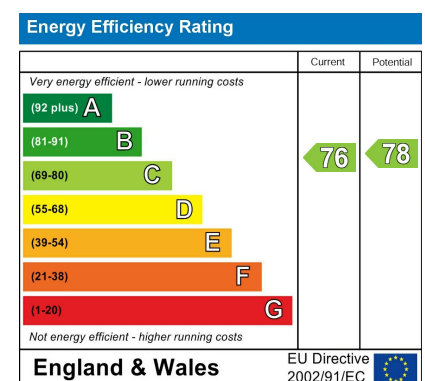


Sheet Street
Guide Price £375,000



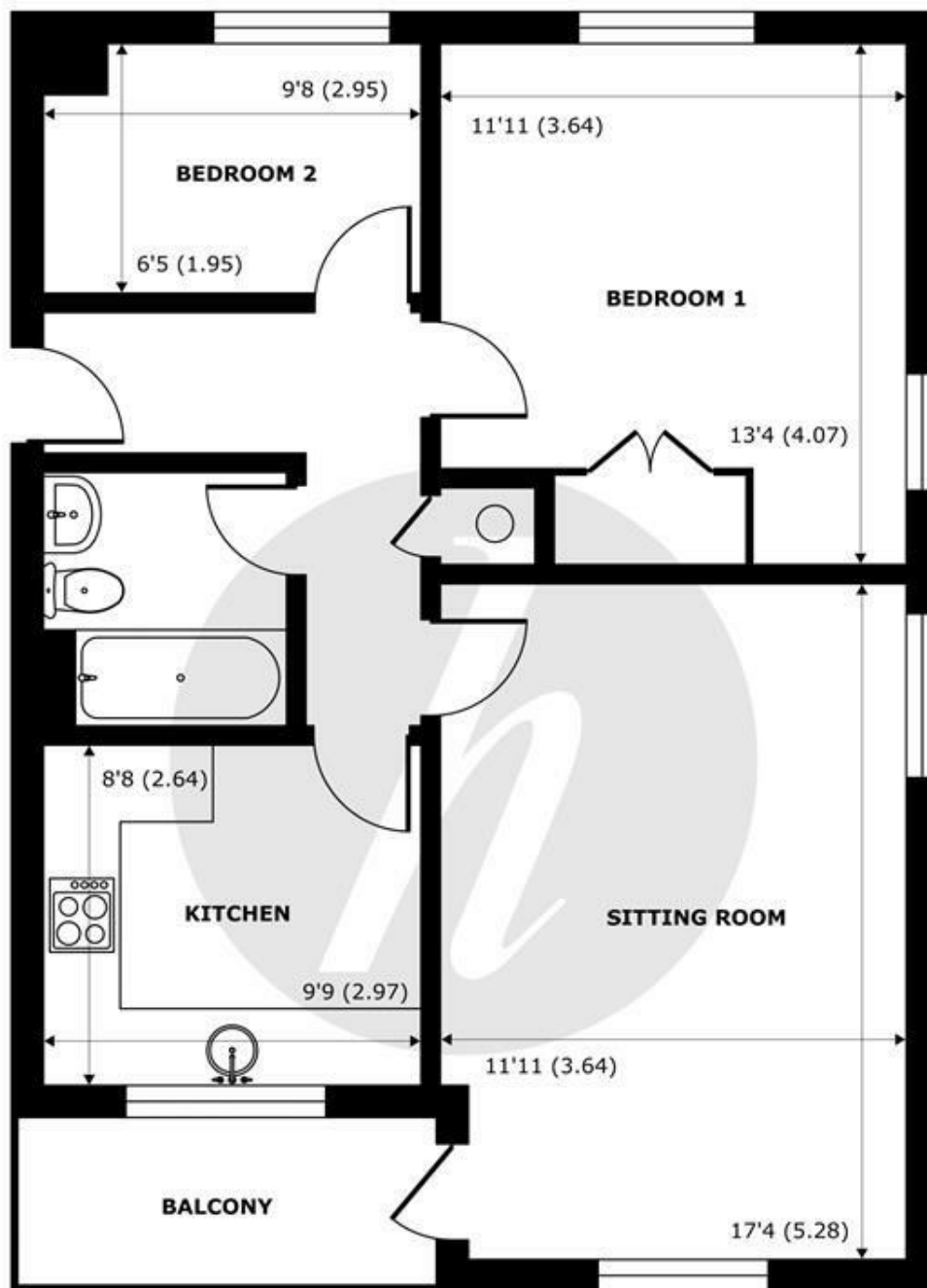


A well presented two bedroom first floor flat in a popular gated development, conveniently located just a short walk to Windsor town centre, direct rail links to London (Waterloo & Paddington) and an array of restaurants and shops. Located on the first floor, the property benefits from a lift, dual-aspect reception/diner with direct access to a private balcony and allocated parking with additional spaces available for visitors. In addition, residents have private access to the landscaped communal grounds, which lead directly to the Long Walk.



Features

- Two Bedroom Apartment
- Dual Aspect Reception/Diner
- Direct Access to The Long Walk
- Balcony
- Short Walk to Windsor Town Centre
- Secure Gated Development
- Allocated Parking Space & Visitor Parking
- Communal Gardens
- Over 135 years on Lease
- Lift



FIRST FLOOR
abt 731 SQFT (67.9 SQMT)

Sheet Street, Windsor, SL4

Approximate Internal Area = 638 sq ft / 59.2 sq m

Approximate External Area = 731 sq ft / 67.9 sq m

For identification only - Not to scale



Floor plan produced in accordance with RICS Property Measurement 2nd Edition,
Incorporating International Property Measurement Standards (IPMS2 Residential). © nichecom 2025.
Produced for Hardings. REF: 1249697





11 High Street, Windsor, Berkshire, SL4 1LD,
T: 01753 833 118 | E: info@hardings.co.uk
www.hardings.co.uk

