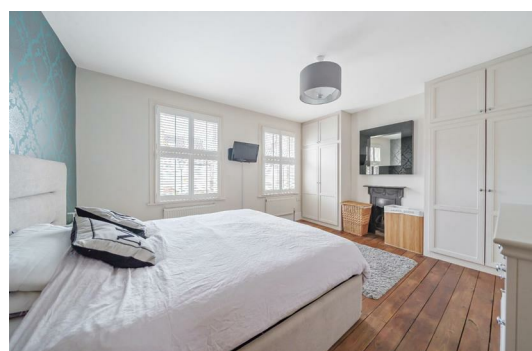




HARDINGS

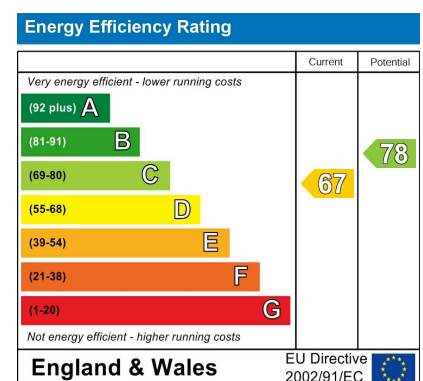


Beaumont Road
Guide Price £925,000





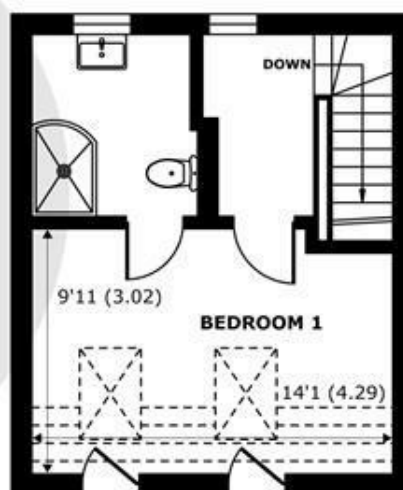
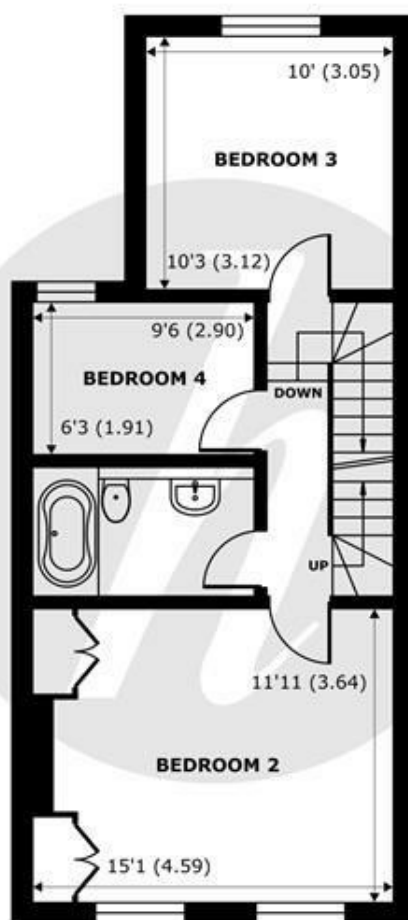
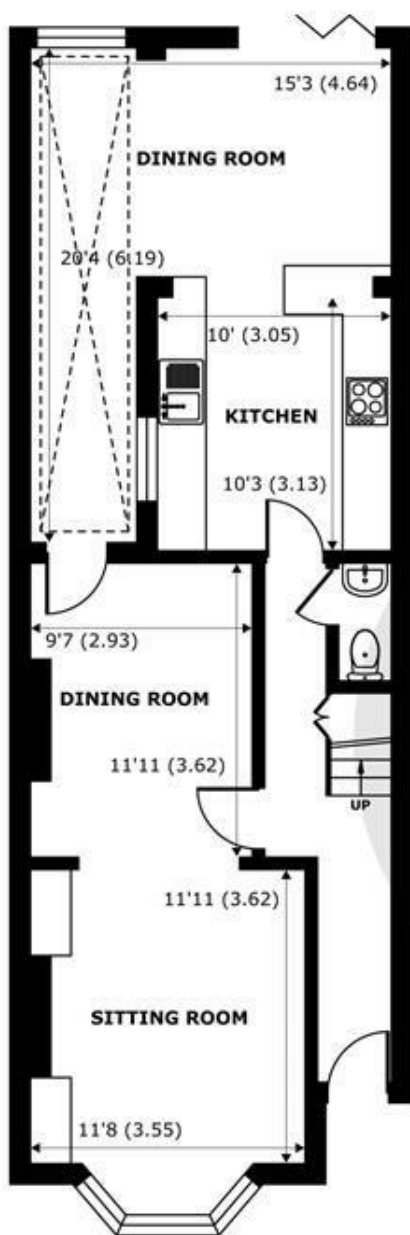
A well presented four bedroom terraced period villa located in on a popular residential road in the town centre, just a short stroll to local shops, restaurants and mainline rail links to London. Extended and remodelled to create spacious and practical living accommodation, the property further benefits from period features and a low maintenance garden.



Features

- Four Bedroom Home
- Modern Eat in Kitchen
- Wealth of Period Features Throughout
- Ample Storage
- Double Reception Room
- Bi-Fold Doors to Garden
- Quiet Residential Road
- Moments from Town Centre

Denotes restricted
head height



Beaumont Road, Windsor, SL4

Approximate Internal Area = 1334 sq ft / 123.9 sq m

Approximate External Area = 1615 sq ft / 150 sq m

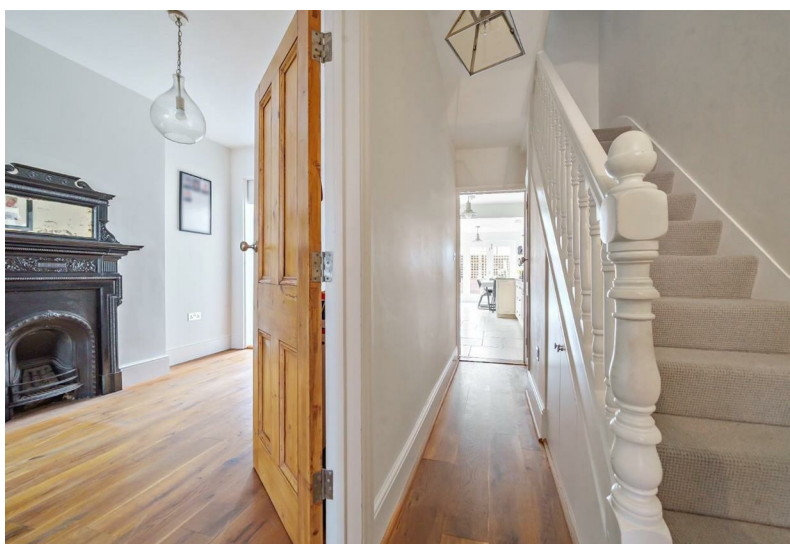
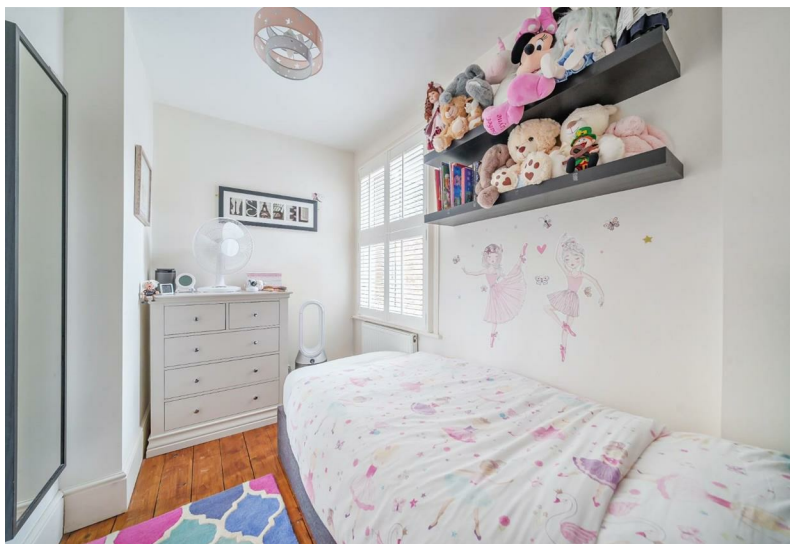
Limited Use Area(s) = 40 sq ft / 3.7 sq m

For identification only - Not to scale



Floor plan produced in accordance with RICS Property Measurement 2nd Edition,
Incorporating International Property Measurement Standards (IPMS2 Residential). © nichecom 2025.
Produced for Hardings. REF: 1231084





11 High Street, Windsor, Berkshire, SL4 1LD,
T: 01753 833 118 | E: info@hardings.co.uk
www.hardings.co.uk

