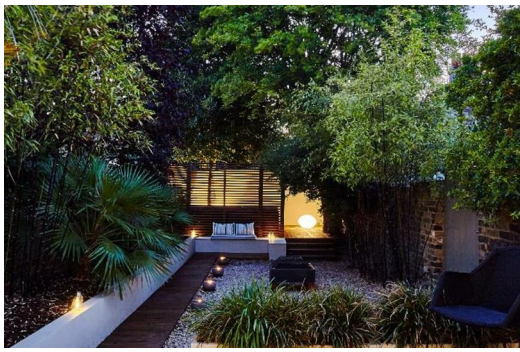




# HARDINGS

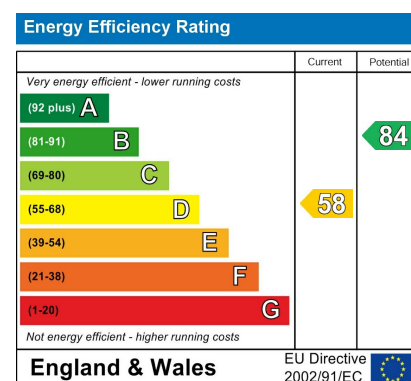


St. Marks Place  
Price Guide £900,000



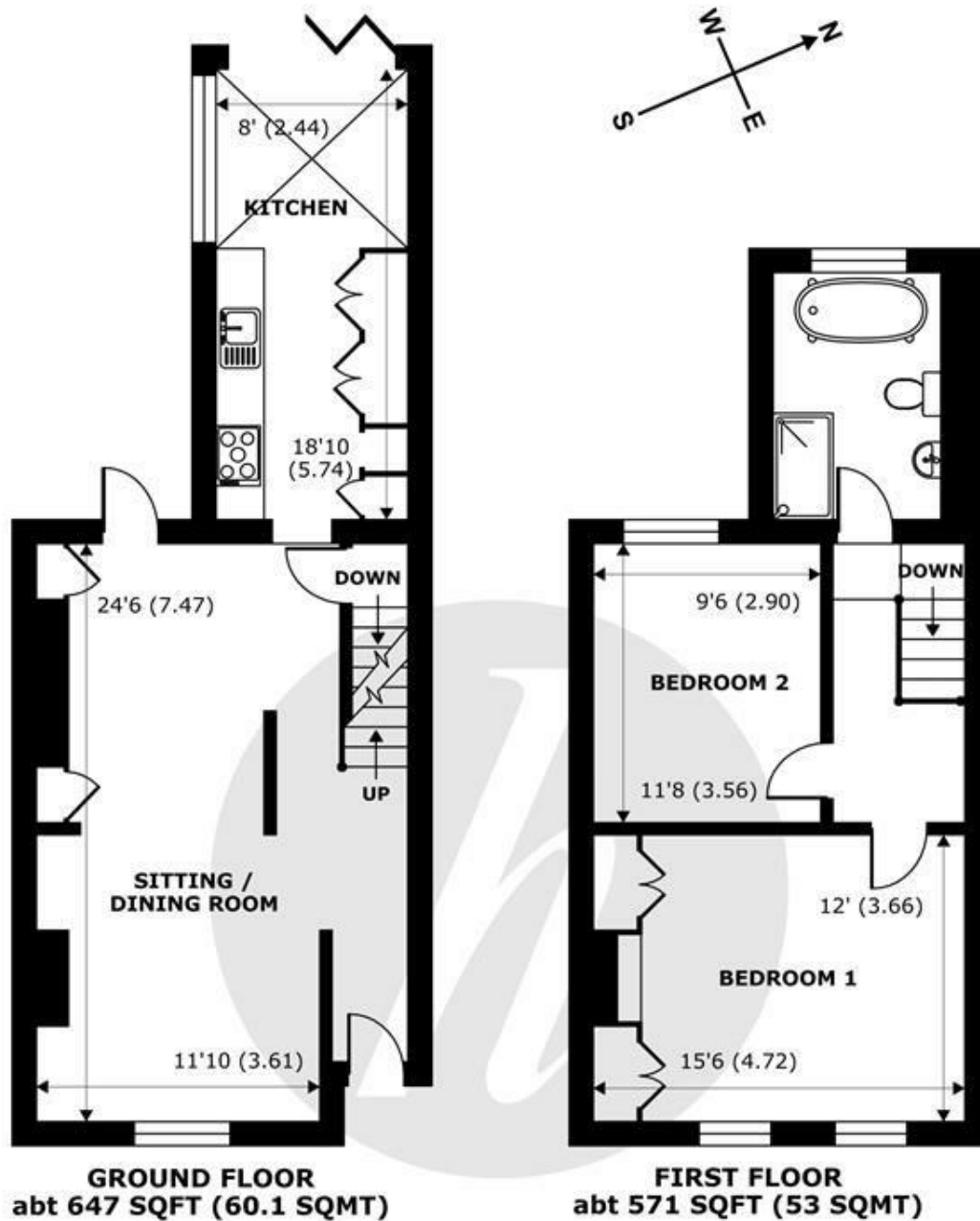


An exceptional 2 bedroom end of terrace Georgian property with the option for off street parking for one car. Located on a pretty road, just a short walk to the shops, restaurants and mainline rail links to London, the property has been architecturally designed to create light, spacious and contemporary accommodation throughout. Offered to the market with no onward chain, further benefits include landscaped garden to the rear, side access, wonderfully high ceilings and yoga room/study.



## Features

- Two Bedroom End of Terrace Georgian Property
- Approx 70ft West Facing Landscaped Garden & Terrace
- Office Room/ Yoga Room
- Architecturally Designed and Renovated Throughout
- Wonderfully High Ceilings
- Open Plan Reception & Dining Room with Glass Paneling Feature Wall
- Town Centre Location
- Side Access
- Option to Park One Car Off-Street
- Excellent Storage



## St. Marks Place, Windsor, SL4

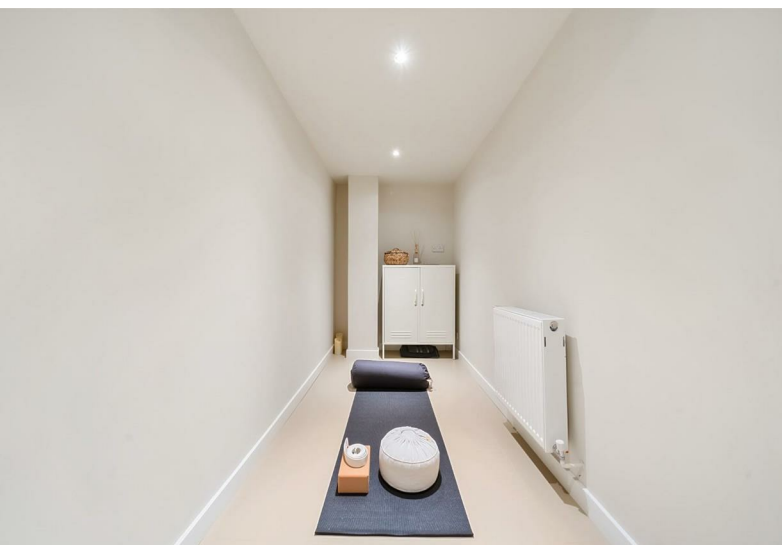
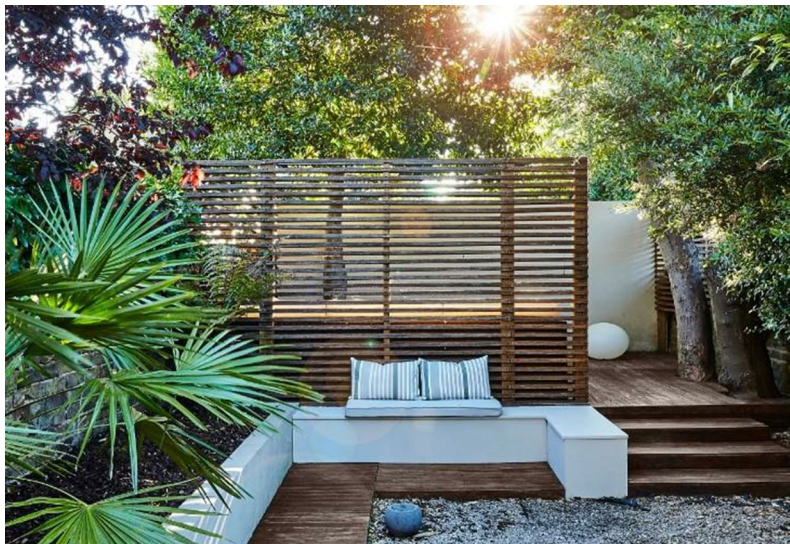
Approximate Internal Area = 1065 sq ft / 98.9 sq m  
 Approximate External Area = 1352 sq ft / 125.6 sq m

For identification only - Not to scale



Floor plan produced in accordance with RICS Property Measurement Standards incorporating International Property Measurement Standards (IPMS2 Residential). © nichecom 2024. Produced for Hardings. REF: 1191138.





11 High Street, Windsor, Berkshire, SL4 1LD,  
T: 01753 833 118 | E: info@hardings.co.uk  
www.hardings.co.uk

