



HARDINGS

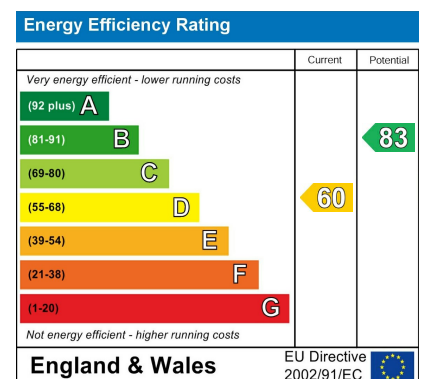


Helena Road
Offers Over £625,000



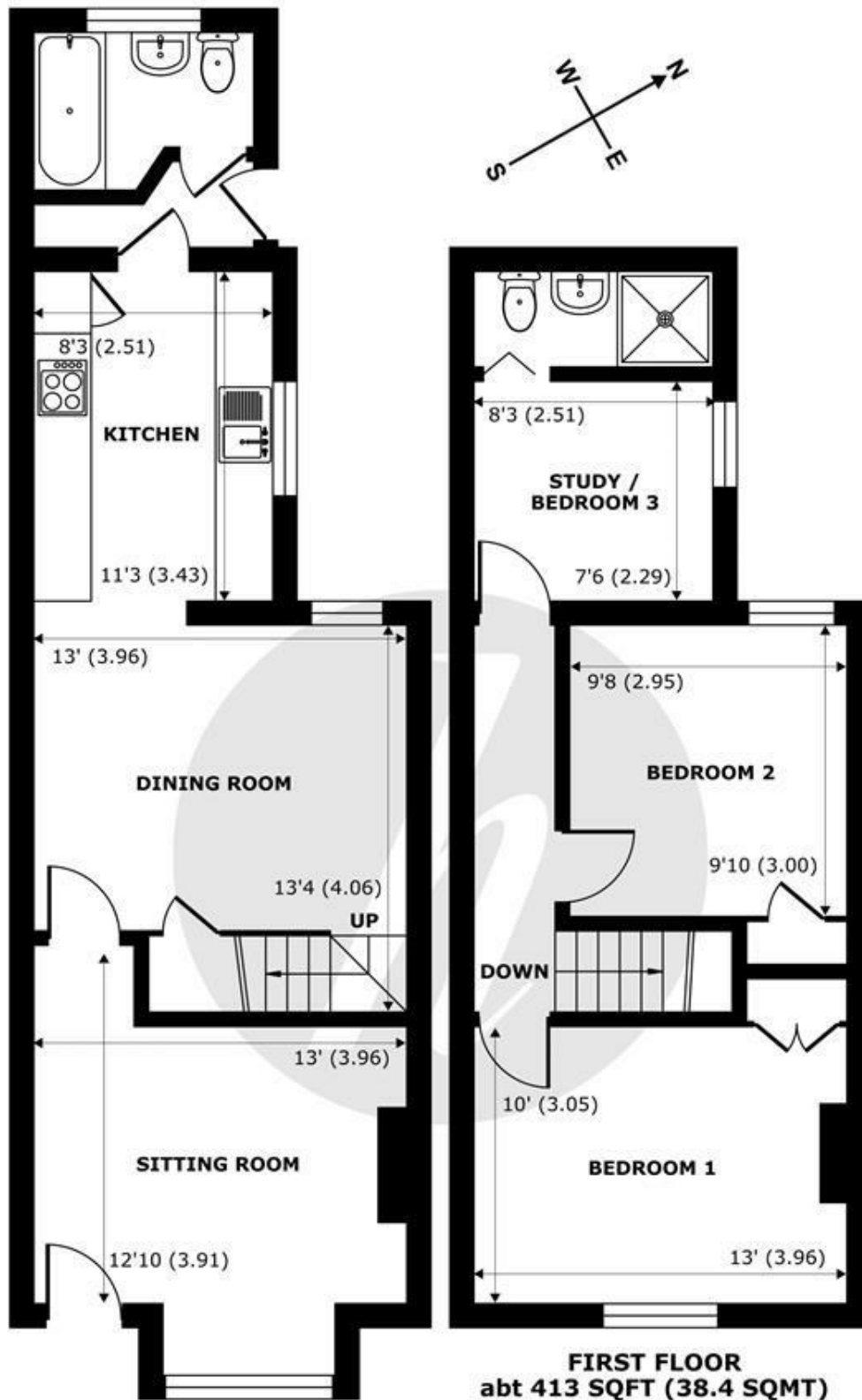


A delightful 3 bedroom terraced period property located on a popular road just a short stroll to Windsor's bustling town centre and its array of shops and restaurants. Offering well presented and flexible accommodation, the property further benefits from a low maintenance west facing courtyard garden, contemporary kitchen and 2 bathrooms (1 x en-suite).



Features

- 3 Bedroom Period House
- 2 Reception Rooms
- 2 Bathrooms (1x en-suite)
- Short Walk to Local Amenities, The long Walk and Windsor Castle
- Town Centre Location
- Modern Kitchen
- Pretty West Facing Courtyard Garden
- No Chain



GROUND FLOOR
 abt 592 SQFT (55 SQMT)

FIRST FLOOR
 abt 413 SQFT (38.4 SQMT)

Helena Road, Windsor, SL4

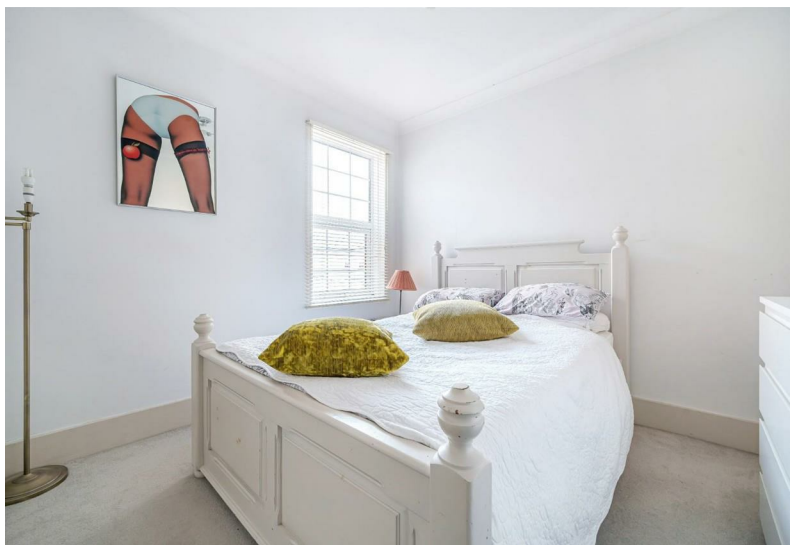
Approximate Internal Area = 903 sq ft / 83.9 sq m
 Approximate External Area = 1087 sq ft / 101 sq m

For identification only - Not to scale



Floor plan produced in accordance with RICS Property Measurement Standards incorporating International Property Measurement Standards (IPMS2 Residential). © nichecom 2024. Produced for Hardings. REF: 1192528





11 High Street, Windsor, Berkshire, SL4 1LD,
T: 01753 833 118 | E: info@hardings.co.uk
www.hardings.co.uk

