



HARDINGS

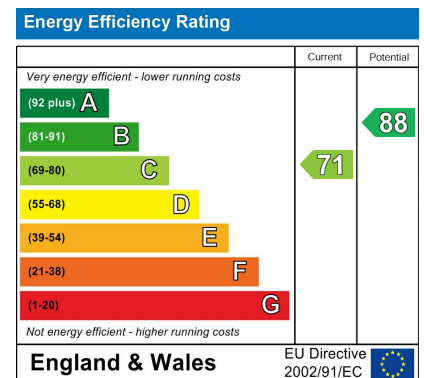


Adelaide Square
Price Guide £895,000



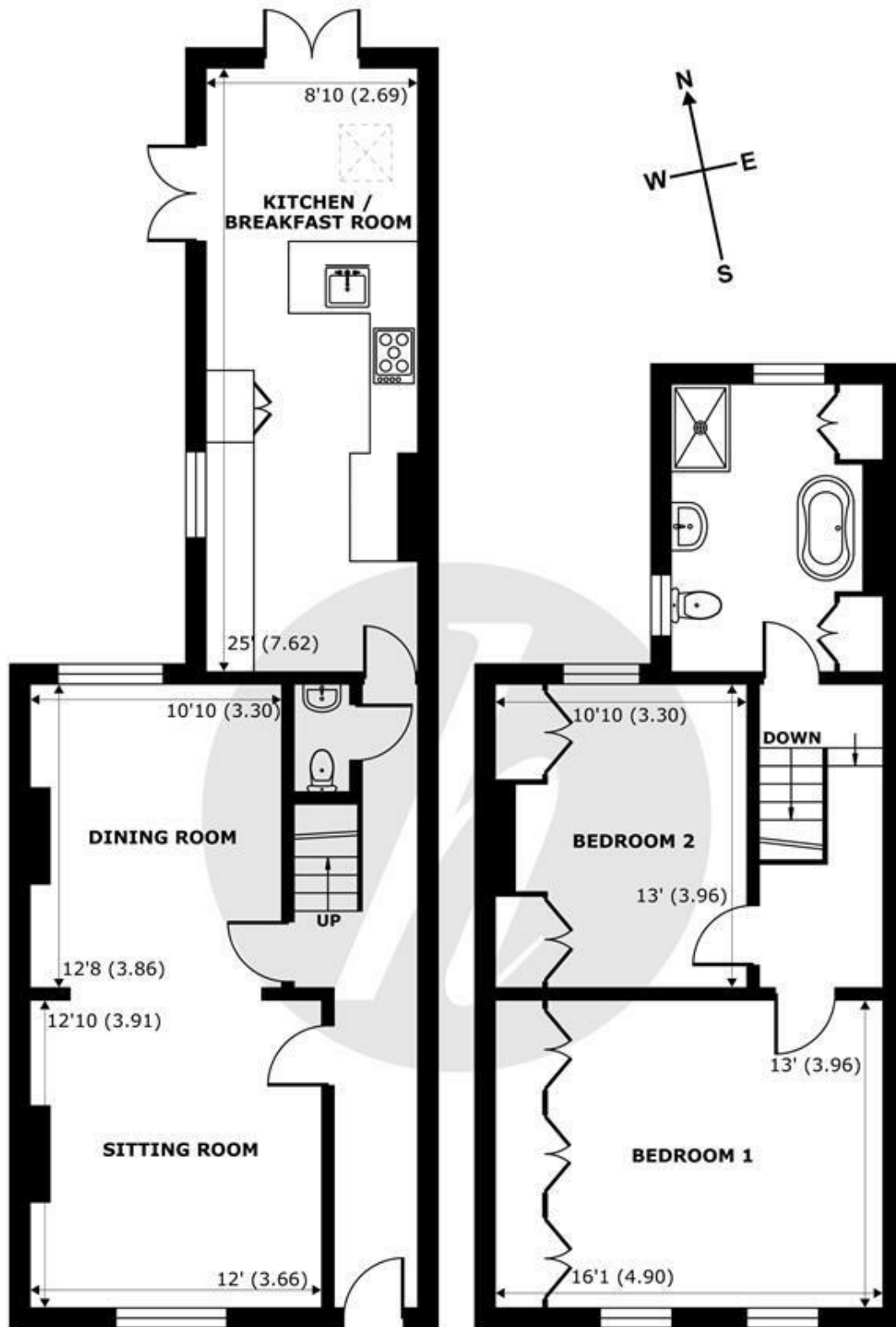


A beautiful two bedroom Georgian house, located on a charming road in the Golden Triangle, just a short stroll to the Long Walk, local amenities and mainline rail links to London. Sympathetically renovated by the current owner to create an elegantly seamless interior, further benefits include, an extended kitchen featuring a stylish shaker style kitchen, an array of period features, landscaped gardens and cloakroom.



Features

- Grade II Listed Georgian 2 Bedroom House
- Eat in Kitchen with Vaulted Ceiling and Double Aspect Sliding Doors onto Garden
- Period Features
- Golden Triangle
- Sympathetically Renovated
- Low Maintenance Garden with Infinity Tiling
- Cloakroom



GROUND FLOOR
abt 763 SQFT (70.8 SQMT)

FIRST FLOOR
abt 625 SQFT (58 SQMT)

Adelaide Square, Windsor, SL4

Approximate Internal Area = 1178 sq ft / 109.4 sq m

Approximate External Area = 1388 sq ft / 128.9 sq m

For identification only - Not to scale



Floor plan produced in accordance with RICS Property Measurement Standards incorporating International Property Measurement Standards (IPMS2 Residential). © nichecom 2024. Produced for Hardings. REF: 1191675.





11 High Street, Windsor, Berkshire, SL4 1LD,
T: 01753 833 118 | E: info@hardings.co.uk
www.hardings.co.uk

