



HARDINGS

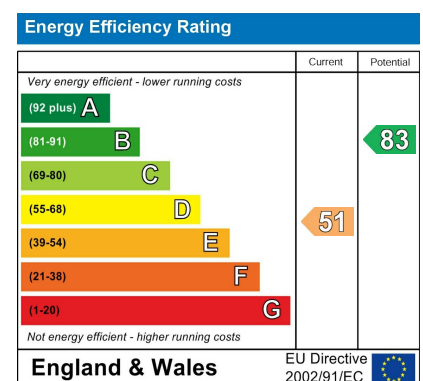


Wood Close
Offers Over £635,000



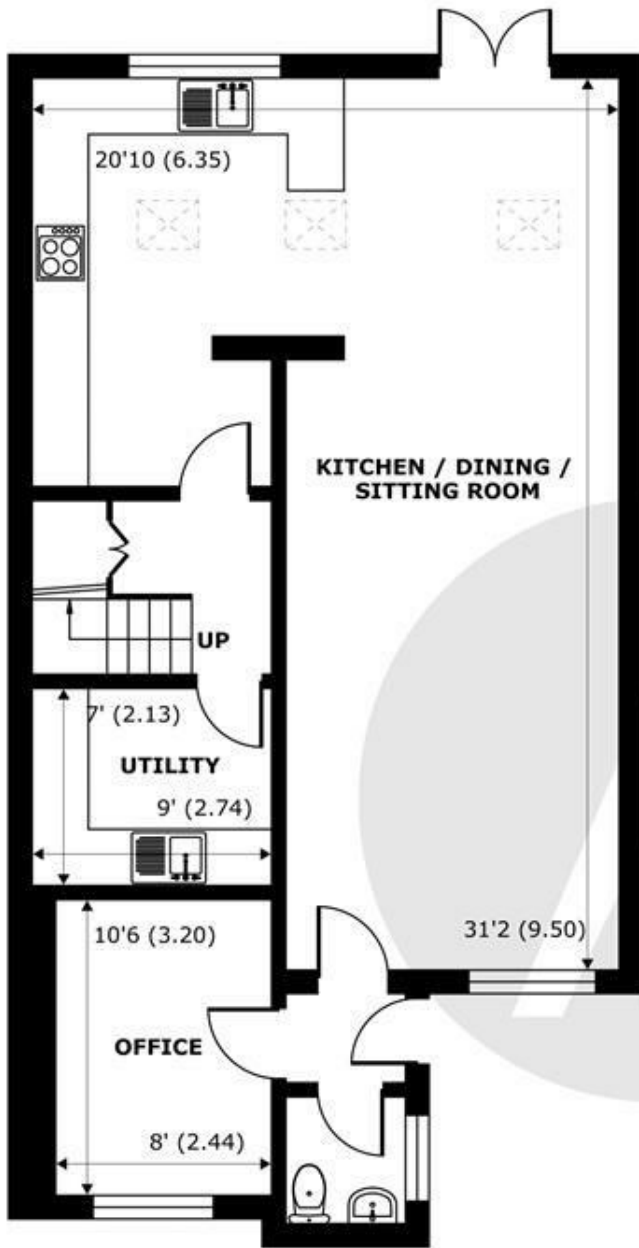
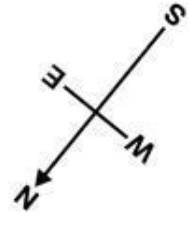


A superb 3 bedroom house that's been remodelled to provide light and spacious open-plan living accommodation and has been the subject of a full refurbishment by the current owner. Located just a short walk from Windsor town centre , The Long Walk & Windsor Great Park, the property further benefits from, utility room, off street parking, attractively landscaped garden and open views over the allotments.

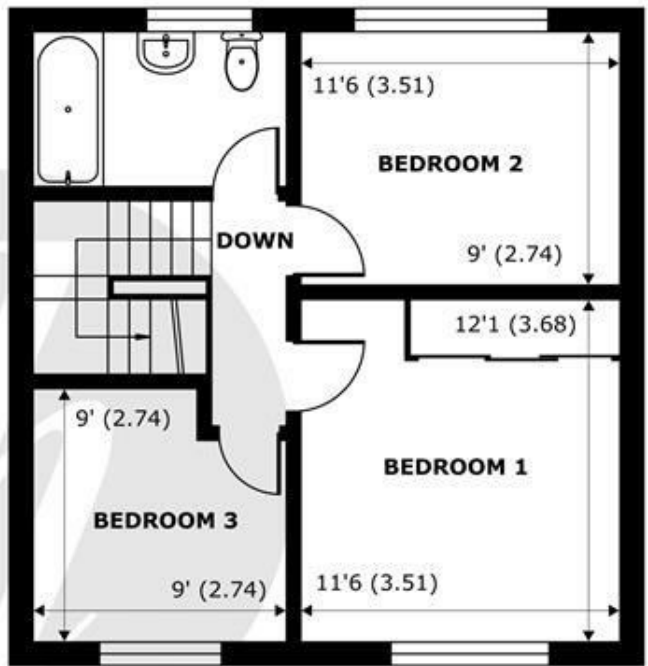


Features

- Refurbished Terraced House
- Open Plan Living Accommodation
- Downstairs Cloakroom
- Landscaped garden
- 3 Bedrooms
- Driveway Parking For 2 Cars
- Walking Distance to Windsor Town Centre and Great Park
- Study



GROUND FLOOR
abt 769 SQFT (71.4 SQMT)



FIRST FLOOR
abt 451 SQFT (41.8 SQMT)

Wood Close, Windsor, SL4

Approximate Internal Area = 1220 sq ft / 113.3 sq m

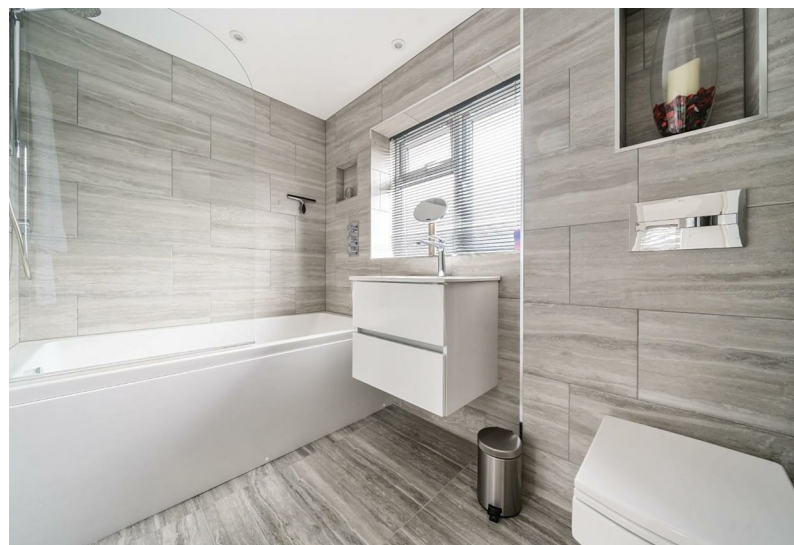
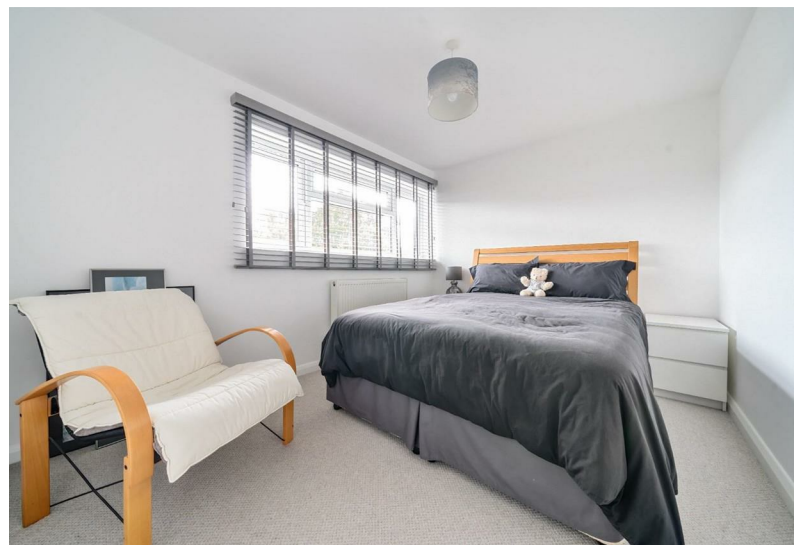
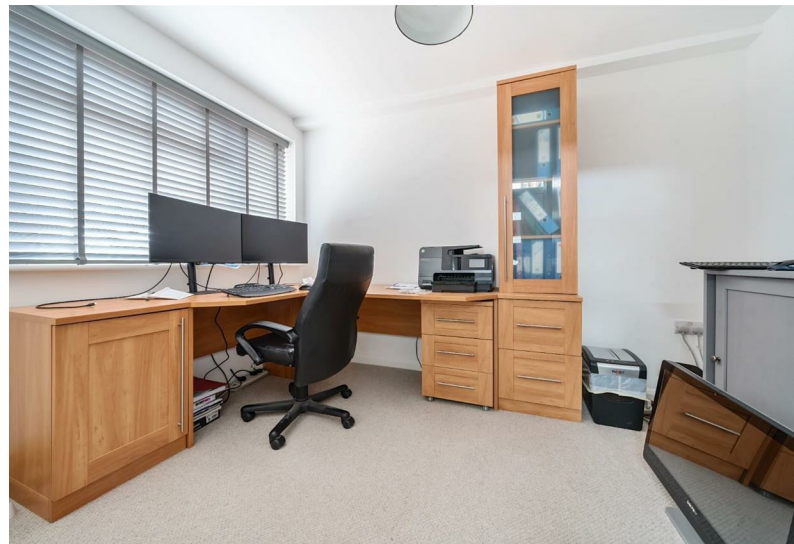
Approximate External Area = 1400 sq ft / 130 sq m

For identification only - Not to scale



Floor plan produced in accordance with RICS Property Measurement Standards incorporating International Property Measurement Standards (IPMS2 Residential). © nichecom 2024. Produced for Hardings. REF: 1144491





11 High Street, Windsor, Berkshire, SL4 1LD,
T: 01753 833 118 | E: info@hardings.co.uk
www.hardings.co.uk

