



# HARDINGS

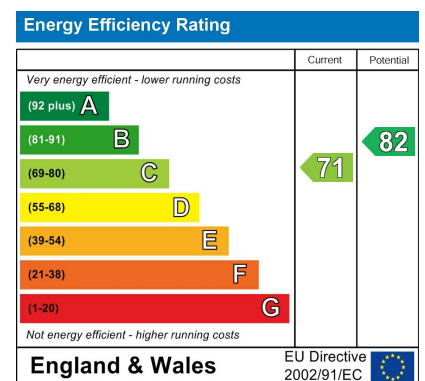


Trevelyan Court  
Offers Over £450,000



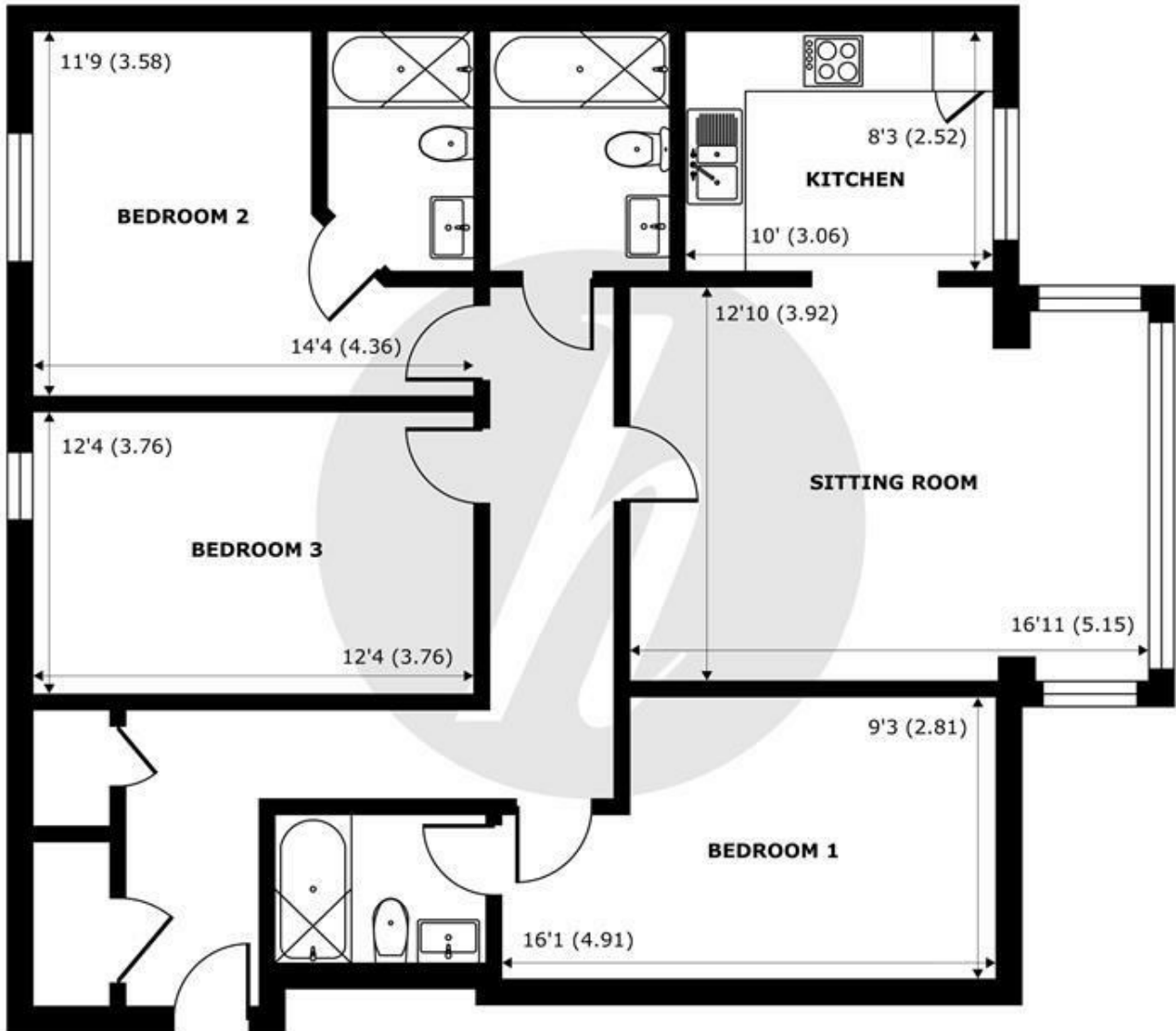
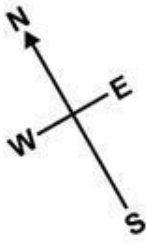


An immaculate & well presented three bedroom top floor apartment, conveniently located in the popular gated development, within a short distance from Windsor Town Centre. Benefitting from a spacious, partially open plan, kitchen reception room with views over the attractive communal gardens. The property comes with three bathrooms, two being en-suites, and vast built in storage throughout. The prestigious development comes with allocated parking and visitor parking is available.



## Features

- Three Double Bedrooms
- Gated Development
- Partially Open Plan Kitchen Reception Area
- Immaculate Condition Throughout
- Short Distance to Windsor Town Centre
- Three Bathrooms
- Allocated Secure Parking
- Integrated Kitchen
- Over 1000sqft of Internal Space
- EPC C



**SECOND FLOOR**  
abt 1146 SQFT (106.4 SQMT)

## Trevelyan Court, Windsor, SL4

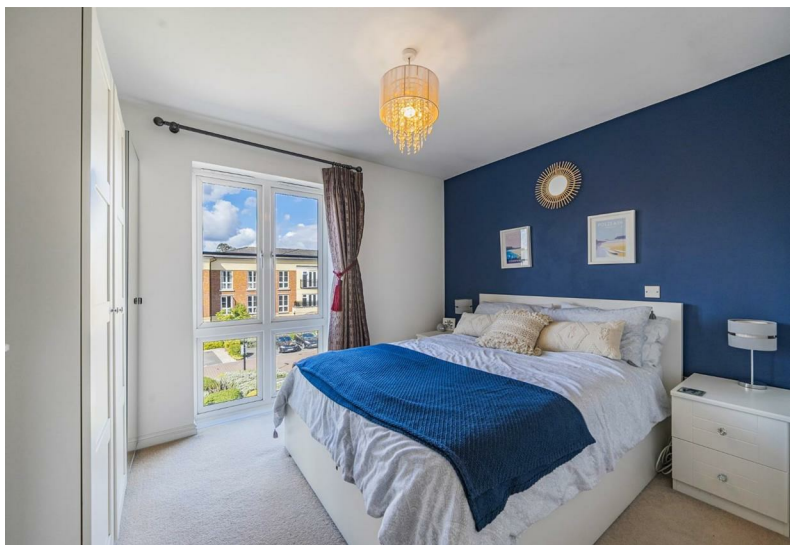
Approximate Internal Area = 1031 sq ft / 95.7 sq m  
Approximate External Area = 1146 sq ft / 106.4 sq m

For identification only - Not to scale



Floor plan produced in accordance with RICS Property Measurement Standards incorporating International Property Measurement Standards (IPMS2 Residential). © nichecom 2024. Produced for Hardings. REF: 1183555.





11 High Street, Windsor, Berkshire, SL4 1LD,  
T: 01753 833 118 | E: info@hardings.co.uk  
www.hardings.co.uk

