



HARDINGS



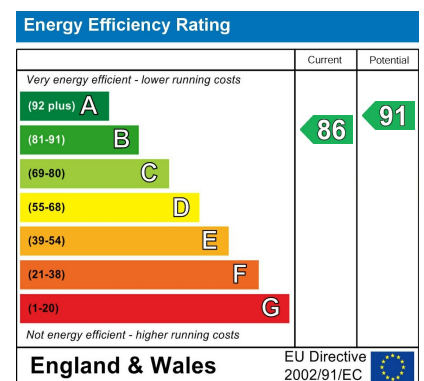
Kingsbury Mews

Price Guide £1,100,000



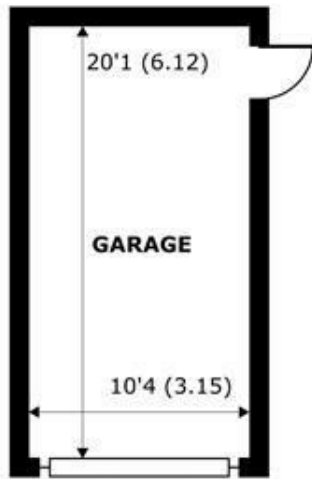
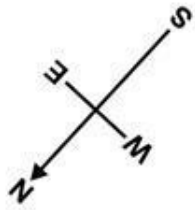


A well presented five bedroom detached modern family home, located in a popular residential area opposite Windsor racecourse just over a mile from the High Street, Long Walk and main line stations. Forming part of Kingsbury Mews, an exclusive development of just fourteen beautifully crafted two, three, four and five bedroom houses in a private enclave on the outskirts of Windsor Town Centre, the property boasts 2197 sq.ft of internal space with an open plan kitchen, dining/ family room, separate sitting room, utility room, parking for 2 cars and garage and large private garden.

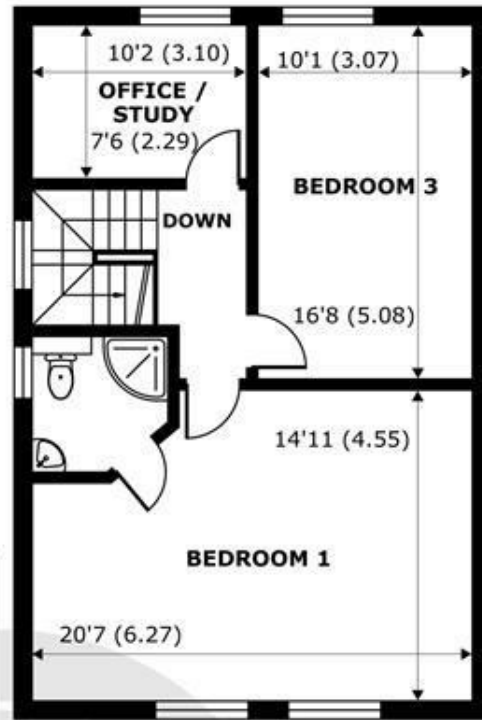


Features

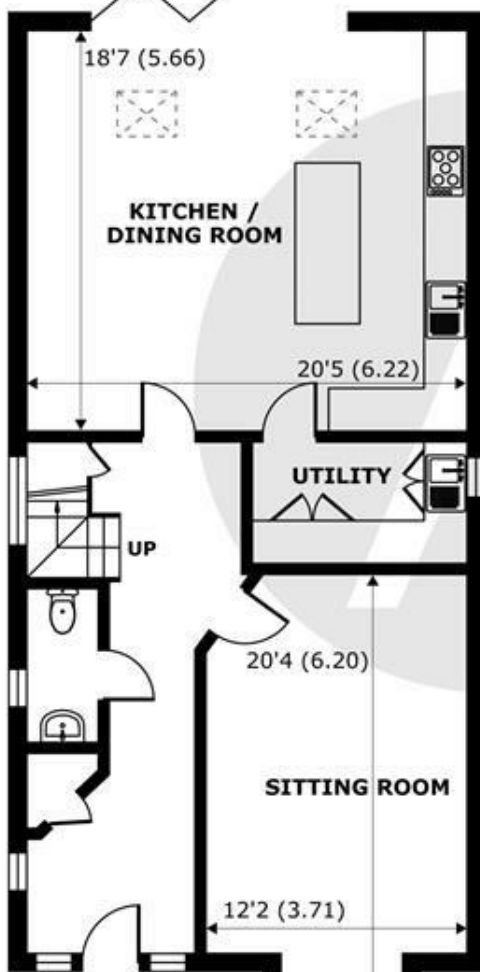
- Detached Home Built in 2020
- Spacious Kitchen/Dining & Family Room perfect for Entertaining
- Modern Interior Throughout
- Detached Garage Large Enough for a SUV
- Cloakroom
- 5 Bedrooms
- Large Private Garden
- Parking for 2 Cars
- 3 Bathrooms (2x en-suites)
- Utility Room



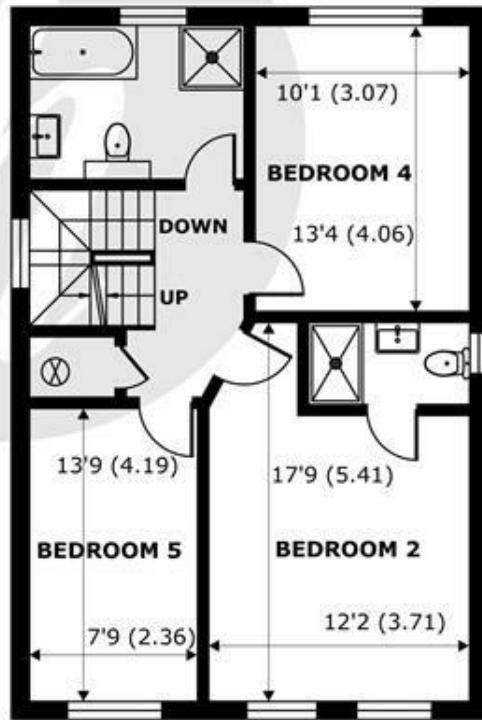
GARAGE
abt 208 SQFT (19.3 SQMT)



SECOND FLOOR
abt 735 SQFT (68.2 SQMT)



GROUND FLOOR
abt 1008 SQFT (93.6 SQMT)



FIRST FLOOR
abt 735 SQFT (68.2 SQMT)

Kingsbury Mews, Windsor, SL4

Approximate Internal Area = 2197 sq ft / 204.1 sq m (Exclude Garage)
Approximate External Area = 2478 sq ft / 230.2 sq m (Exclude Garage)

For identification only - Not to scale



Floor plan produced in accordance with RICS Property Measurement Standards incorporating International Property Measurement Standards (IPMS2 Residential). © nichecom 2024. Produced for Hardings. REF: 1182934.





11 High Street, Windsor, Berkshire, SL4 1LD,
T: 01753 833 118 | E: info@hardings.co.uk
www.hardings.co.uk

