



HARDINGS




4a Eton Square
Price Guide £549,000



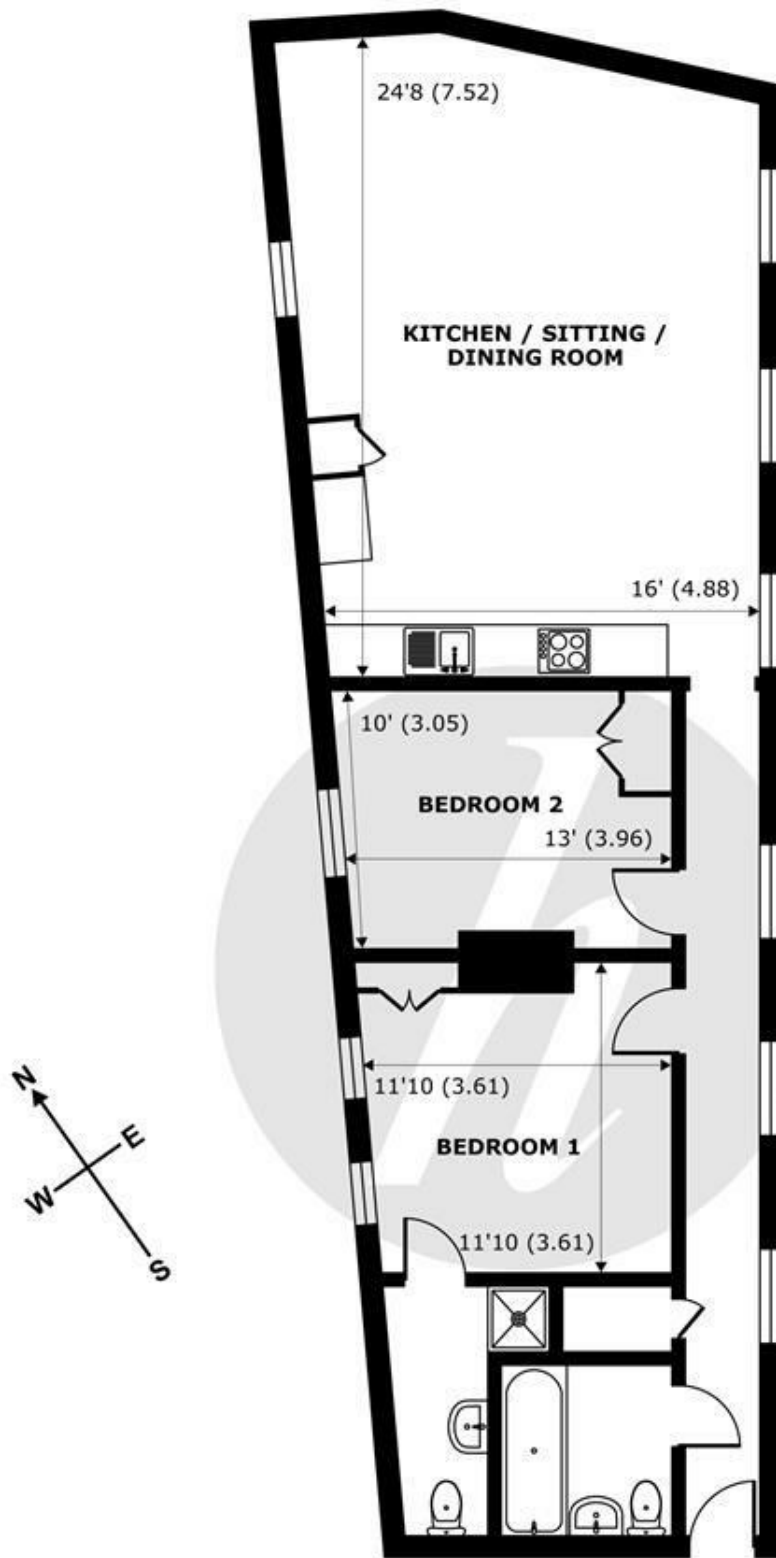


Set behind Eton's historic High Street this beautifully presented first floor apartment forms part of a converted grade II listed antiques warehouse, enjoying views of Windsor Castle and just a short walk from the River Thames and mainline rail connections to London. The property benefits from a spacious open plan kitchen/living room along with two double bedrooms, two bathrooms and an allocated parking space, whilst Eton itself provides an extensive range of restaurants, shops, bars and art galleries.

| Energy Efficiency Rating | | Current | Potential |
|--|--|---|-----------|
| <i>Very energy efficient - lower running costs</i> | | | |
| (92 plus) A | | | |
| (81-91) B | | | |
| (69-80) C | | | |
| (55-68) D | | | |
| (39-54) E | | | |
| (21-38) F | | | |
| (1-20) G | | | |
| <i>Not energy efficient - higher running costs</i> | | | |
| England & Wales | | EU Directive 2002/91/EC  | |

Features

- Sought After Location off Eton High Street
- Beautifully Styled Throughout
- Open Plan Kitchen with Solid Oak Flooring
- No Onward Chain
- First Floor Apartment
- Part of a Converted Antiques Warehouse
- Communal Terrace
- Allocated Off Road Parking



FIRST FLOOR
 abt 1021 SQFT (94.8 SQMT)

Eton Square, Eton, Windsor, SL4

Approximate Internal Area = 898 sq ft / 83.4 sq m

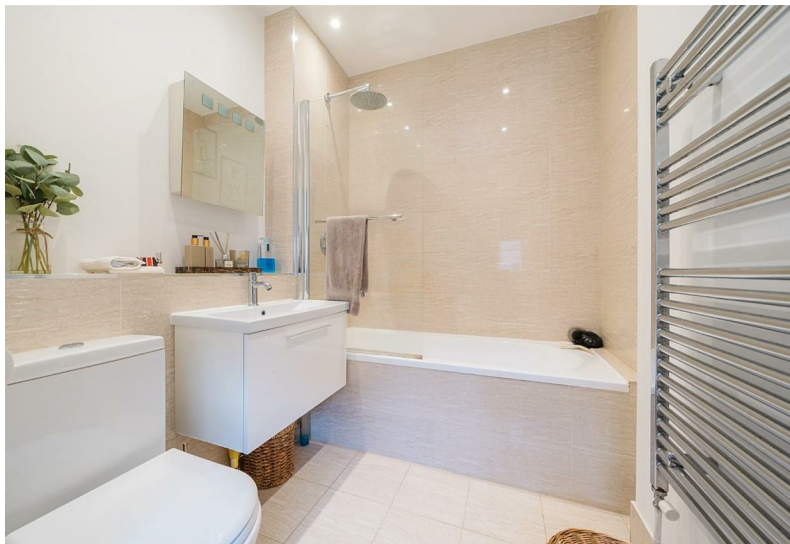
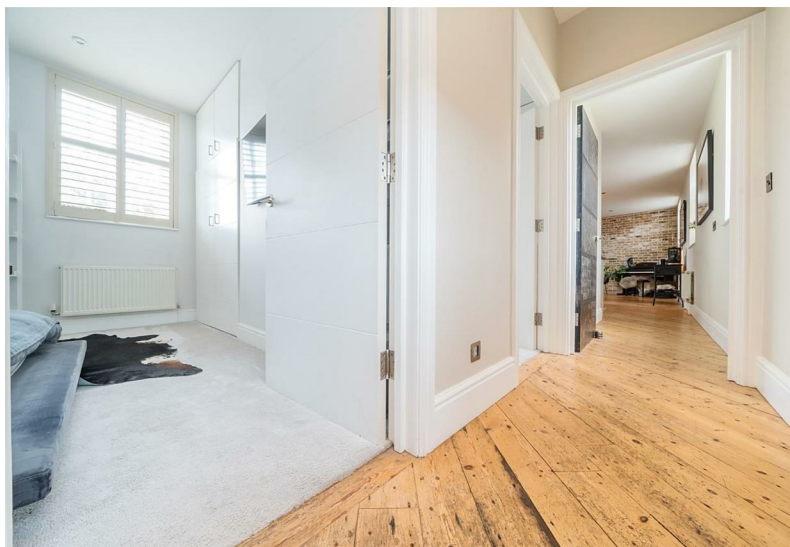
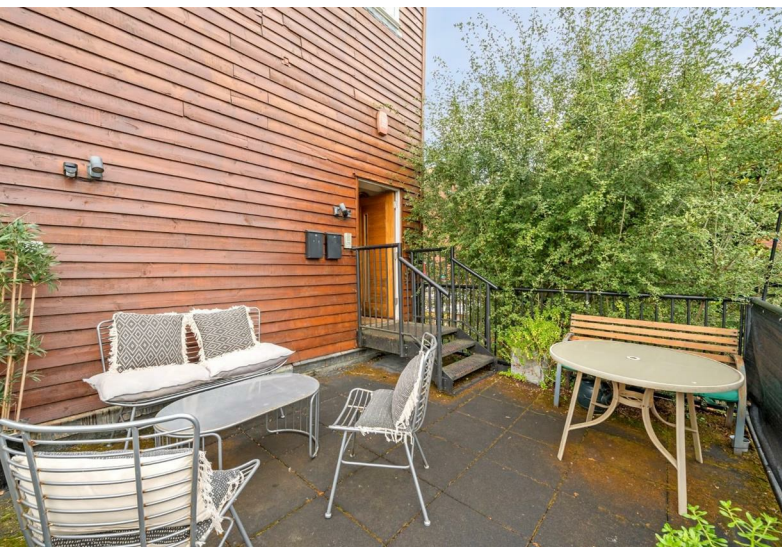
Approximate External Area = 1021 sq ft / 94.8 sq m

For identification only - Not to scale



Floor plan produced in accordance with RICS Property Measurement Standards incorporating International Property Measurement Standards (IPMS2 Residential). © nichecom 2024. Produced for Hardings. REF: 1178569





11 High Street, Windsor, Berkshire, SL4 1LD,
T: 01753 833 118 | E: info@hardings.co.uk
www.hardings.co.uk

