



HARDINGS

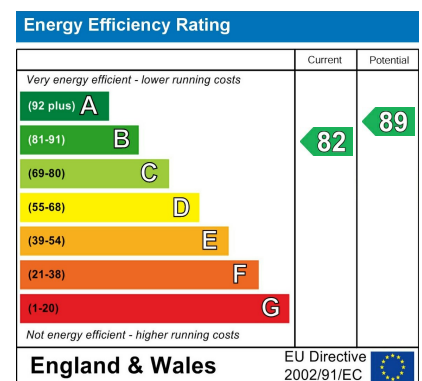


Kensington Mews
Asking Price £779,950



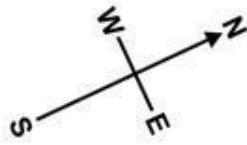


A beautifully presented townhouse with four bedrooms & three bathrooms, situated in a sought after gated development just a short walk to Windsor town centre, Windsor Great Park and local amenities. Benefitting from off street parking for 2 cars, the property further benefits from a contemporary kitchen, low maintenance west facing garden and newly fitted solar thermal panels.

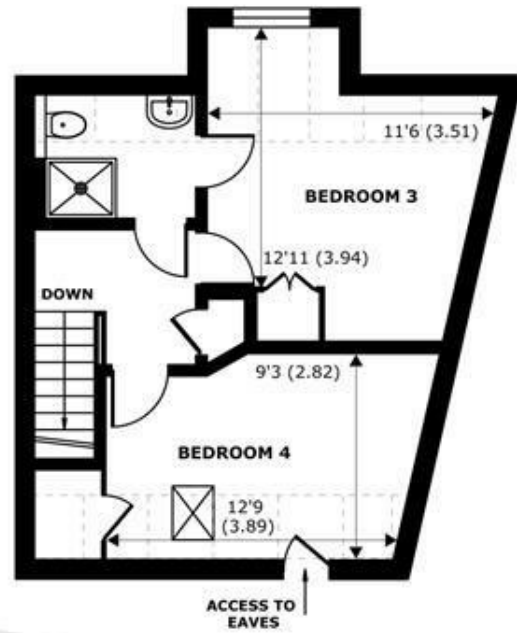


Features

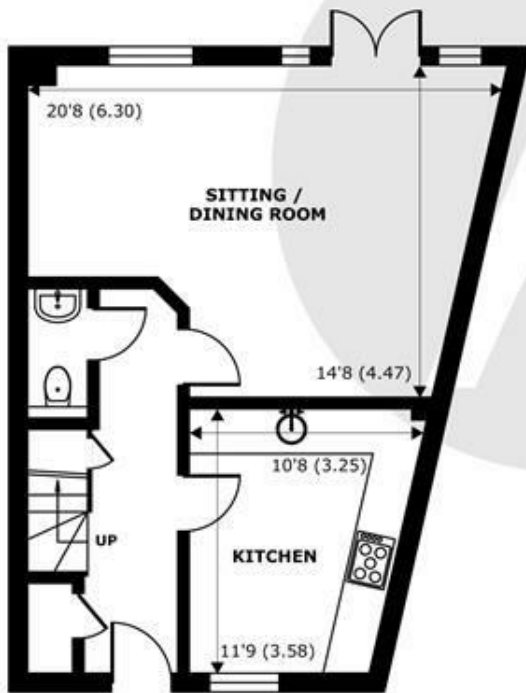
- 4 Bedroom, 3 Bathroom Townhouse
- Walking Distance to Windsor Town Centre
- Built In Wardrobes in a Further 2 Bedrooms
- Contemporary Kitchen
- West Facing Low Maintenance Garden with Rear Access
- Sought After Gated Development
- Principal Bedroom With Ensuite and Built in Wardrobes
- 2 Further Ensuite Bathrooms with “Jack & Jill” style doors
- Cloakroom



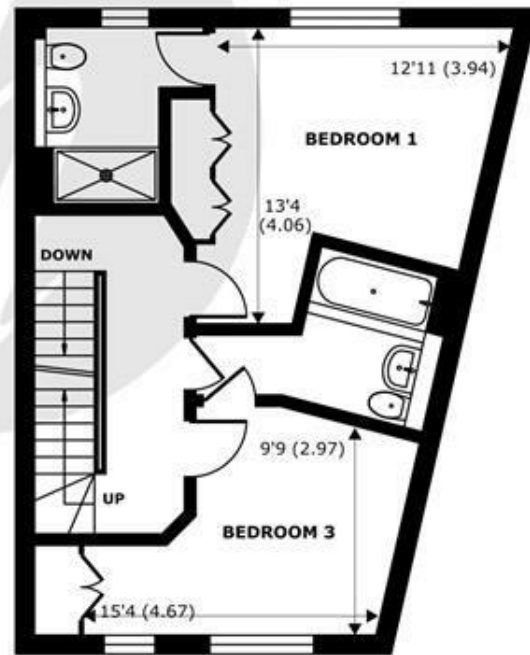
Denotes restricted head height



SECOND FLOOR
abt 387 SQFT (35.9 SQMT)



GROUND FLOOR
abt 492 SQFT (45.7 SQMT)



FIRST FLOOR
abt 492 SQFT (45.7 SQMT)

Kensington Mews, Windsor, SL4

Approximate Internal Area = 1371 sq ft / 127.3 sq m

Approximate External Area = 1690 sq ft / 157 sq m

Limited Use Area(s) = 82 sq ft / 7.6 sq m

For identification only - Not to scale



Floor plan produced in accordance with RICS Property Measurement Standards incorporating International Property Measurement Standards (IPMS2 Residential). © nichecom 2024. Produced for Hardings. REF: 1173886





11 High Street, Windsor, Berkshire, SL4 1LD,
T: 01753 833 118 | E: info@hardings.co.uk
www.hardings.co.uk

