



HARDINGS

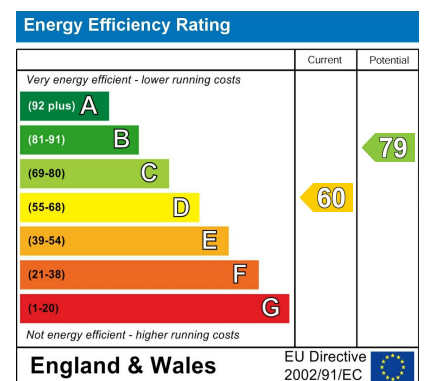


Queens Road
Asking Price £899,950





An attractive 4 bedroom period villa occupying a central location on a popular residential street just a short walk to local shops, bars, restaurants and rail links to London (Waterloo & Paddington). Featuring spacious and well proportioned accommodation throughout, further benefits include pedestrian access to the garden and a wealth of period features.

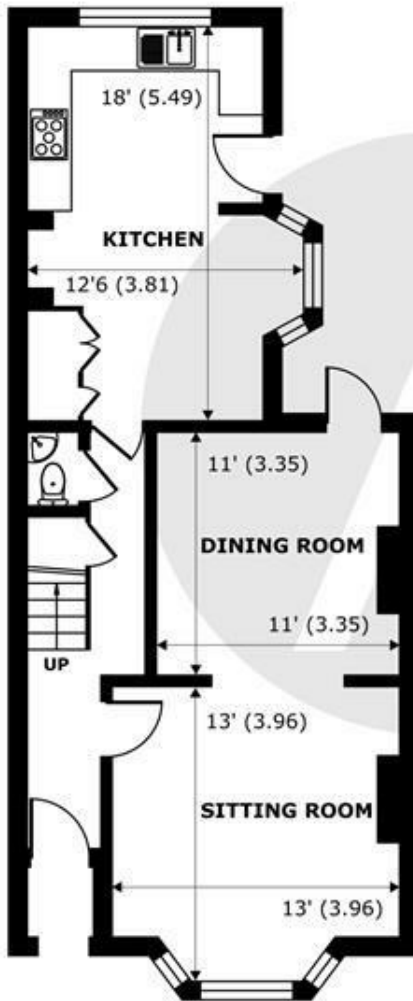


Features

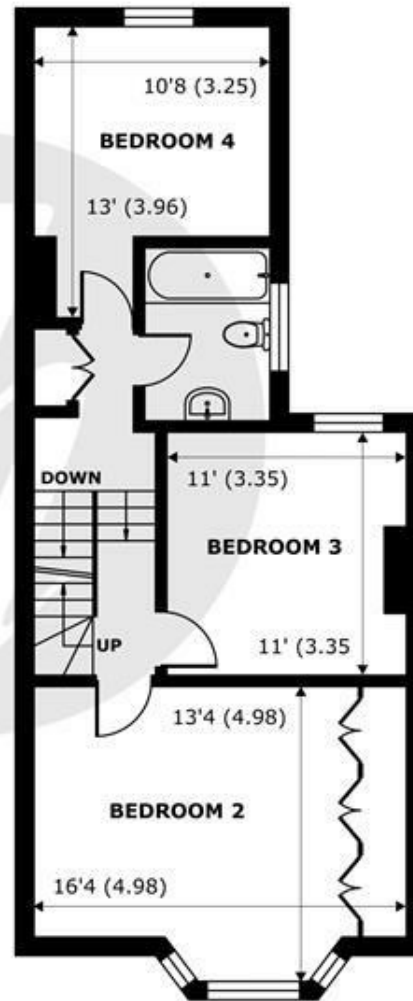
- Attractive Terraced Period Villa
- 4 Double Bedrooms
- Potential to Extend Further (STPP)
- Cloakroom
- Close to Local Amenities
- Pedestrian Access to Garden
- Period Features
- Low Maintenance Garden
- 2 Bathrooms
- Spacious and Well Proportioned Accommodation



SECOND FLOOR
abt 333 SQFT (30.9 SQMT)



GROUND FLOOR
abt 689 SQFT (64 SQMT)



FIRST FLOOR
abt 694 SQFT (64.4 SQMT)

Queens Road, Windsor, SL4

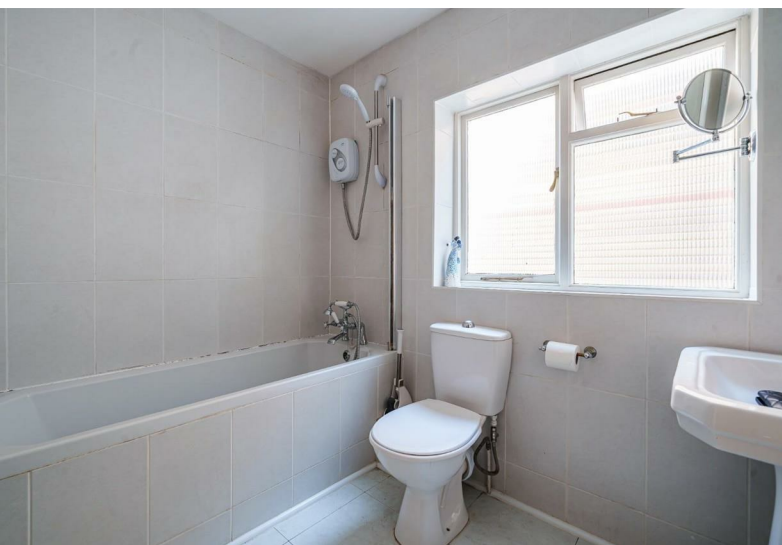
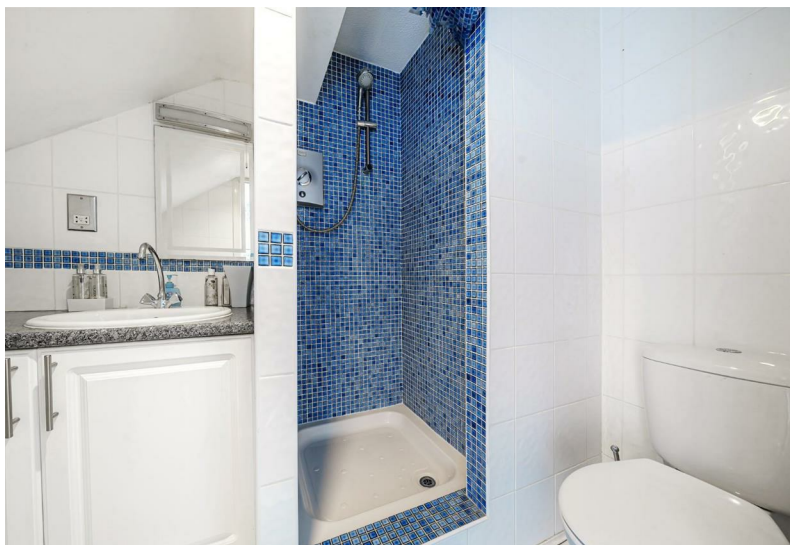
Approximate Internal Area = 1454 sq ft / 135 sq m
Approximate External Area = 1716 sq ft / 159.4 sq m

For identification only - Not to scale



Floor plan produced in accordance with RICS Property Measurement Standards incorporating International Property Measurement Standards (IPMS2 Residential). © nichecom 2024. Produced for Hardings. REF: 1161428





11 High Street, Windsor, Berkshire, SL4 1LD,
T: 01753 833 118 | E: info@hardings.co.uk
www.hardings.co.uk

