



# HARDINGS




Adelaide Square  
£3,250 PCM





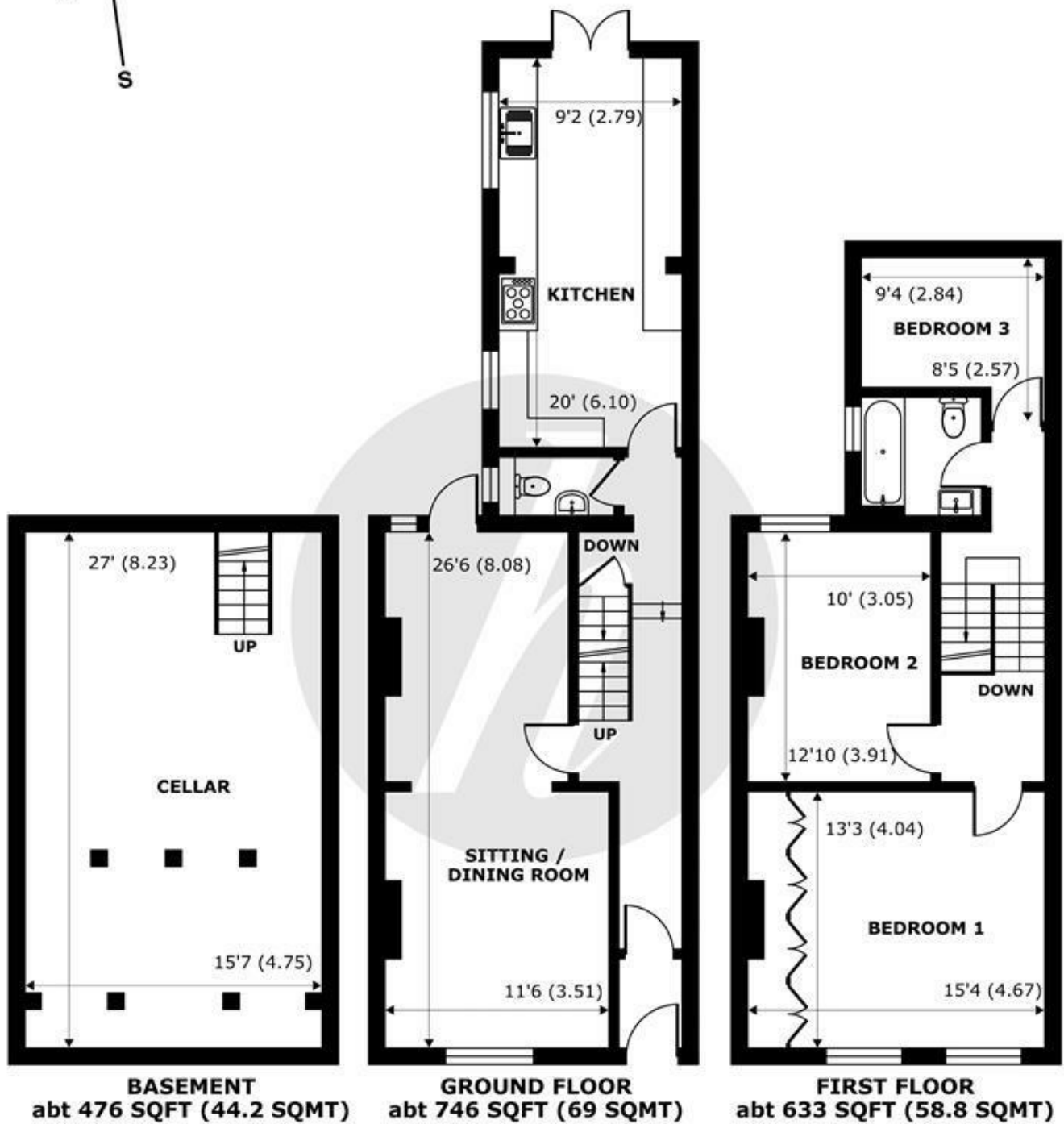
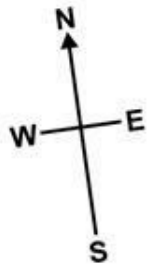


An attractive three bedroom, Grade II listed Georgian house located in the heart of Windsor's sought after 'Golden Triangle'. Adjacent to the Long Walk and just a short walk to the shops and restaurants in the town centre.

Energy Efficiency Rating		
	Current	Potential
<i>Very energy efficient - lower running costs</i>		
(92 plus) <b>A</b>		
(81-91) <b>B</b>		
(69-80) <b>C</b>		
(55-68) <b>D</b>		
(39-54) <b>E</b>		
(21-38) <b>F</b>		
(1-20) <b>G</b>		
<i>Not energy efficient - higher running costs</i>		
<b>England &amp; Wales</b>	EU Directive 2002/91/EC 	

## Features

- Three bedroom house
- Grade II Listed Georgian build
- Modern kitchen with seating area
- Close to Long Walk
- Courtyard garden
- Golden Triangle
- Completely remodelled & refurbished 1 year ago
- Downstairs W/C
- Sought after road
- Tax Band F & EPC D



## Adelaide Square, Windsor, SL4

Approximate Internal Area = 1574 sq ft / 146.2 sq m

Approximate External Area = 1855 sq ft / 172.3 sq m

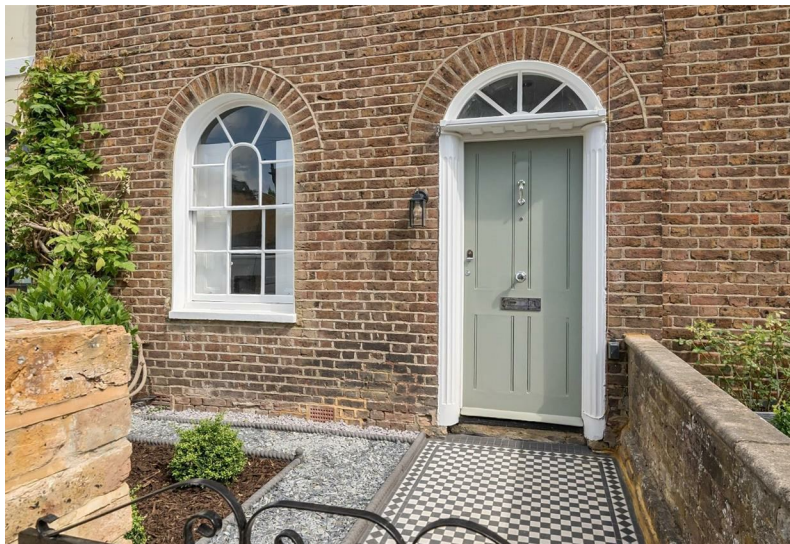
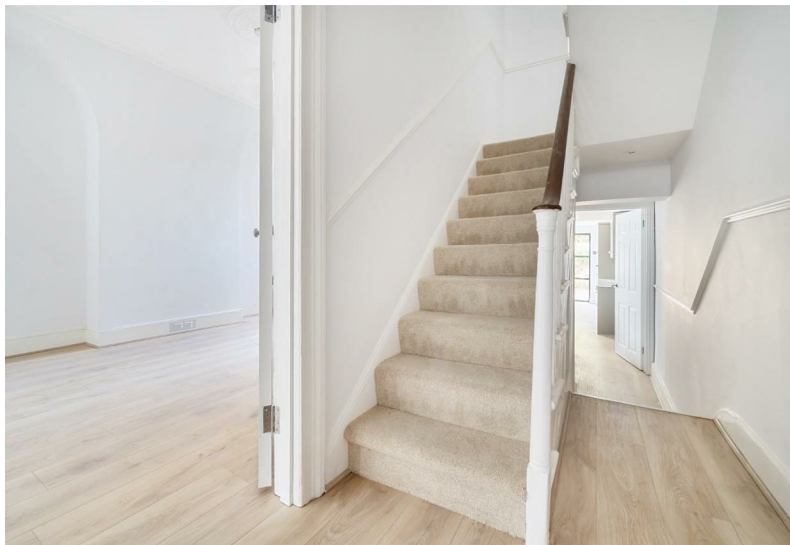
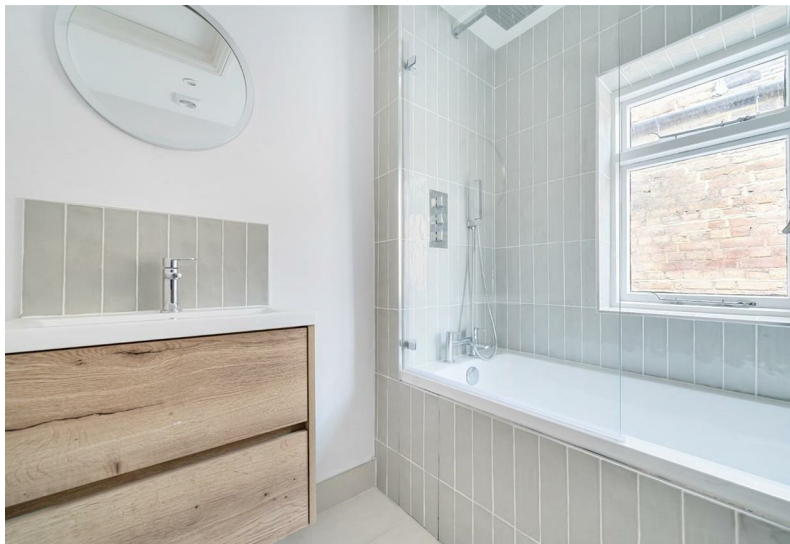
For identification only - Not to scale



Floor plan produced in accordance with RICS Property Measurement Standards incorporating International Property Measurement Standards (IPMS2 Residential). © nichecom 2023. Produced for Hardings. REF: 1008512.







11 High Street, Windsor, Berkshire, SL4 1LD,  
T: 01753 833 118 | E: [info@hardings.co.uk](mailto:info@hardings.co.uk)  
[www.hardings.co.uk](http://www.hardings.co.uk)

