



HARDINGS

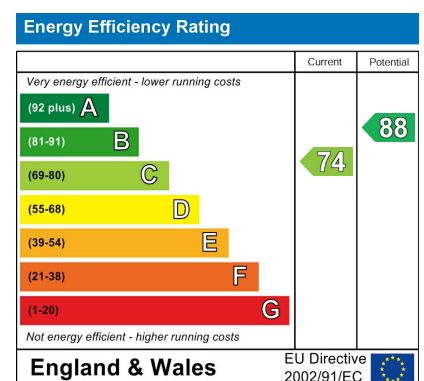


Balmoral Gardens
Guide Price £635,000



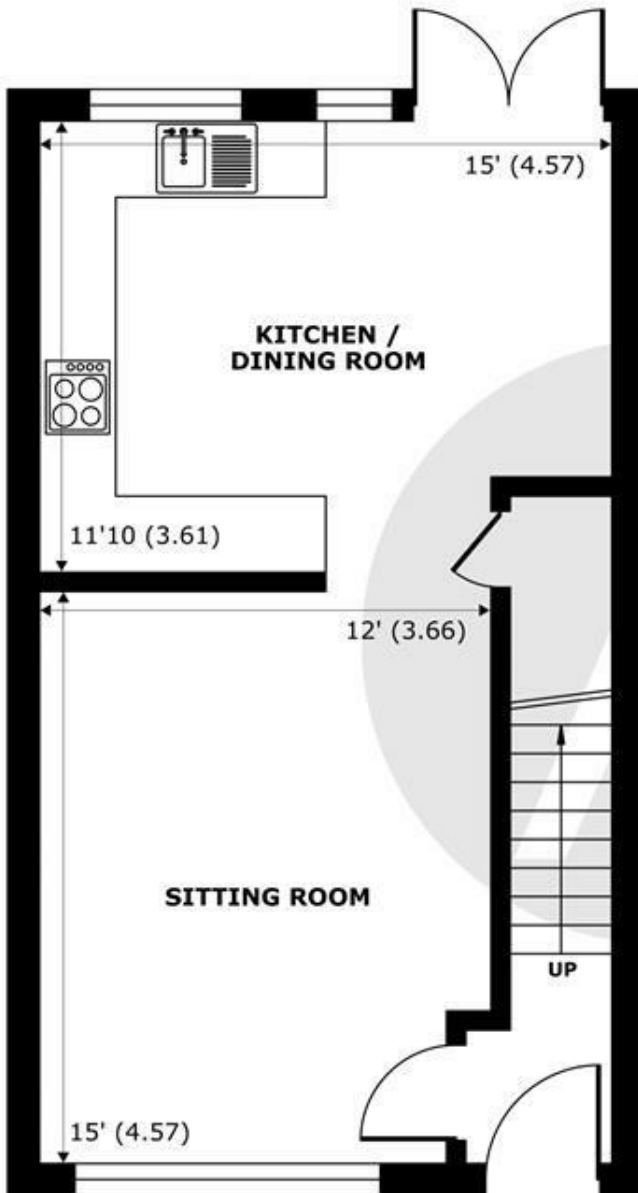
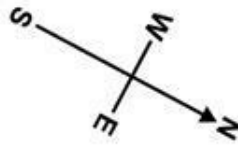


An immaculate and beautifully presented 3 bedroom, 2 bathroom house located in a quiet cul-de-sac, just a short walk to the Long Walk and Windsor's shops, restaurants, cafes and mainline rail links to London. Offering smart and contemporary accommodation throughout the property further benefits from a west facing garden, potential to extend (STPP) and a separate garage.

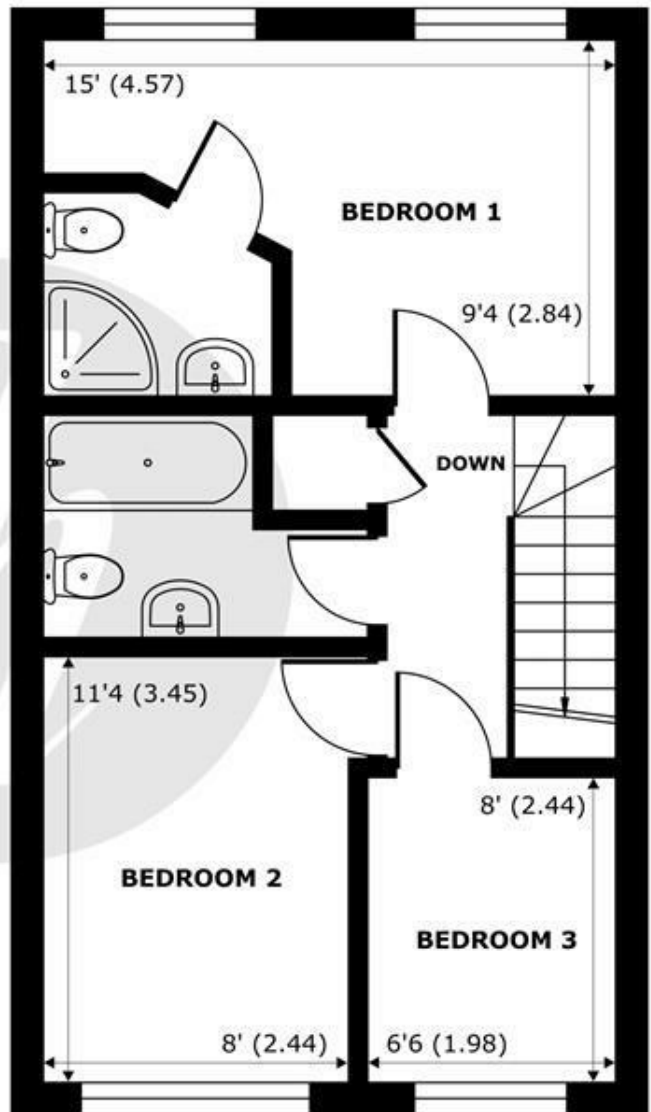


Features

- Immaculate Three Bedroom House
- Garage
- Short Walk to Long Walk and Windsor Town Center
- West Facing Garden
- Council Tax Band: E
- Two Bathrooms
- Potential to Extend (STPP)
- No Chain
- Eat in Kitchen with Direct Access onto Garden



GROUND FLOOR
abt 483 SQFT (44.8 SQMT)



FIRST FLOOR
abt 483 SQFT (44.8 SQMT)

Balmoral Gardens, Windsor, SL4

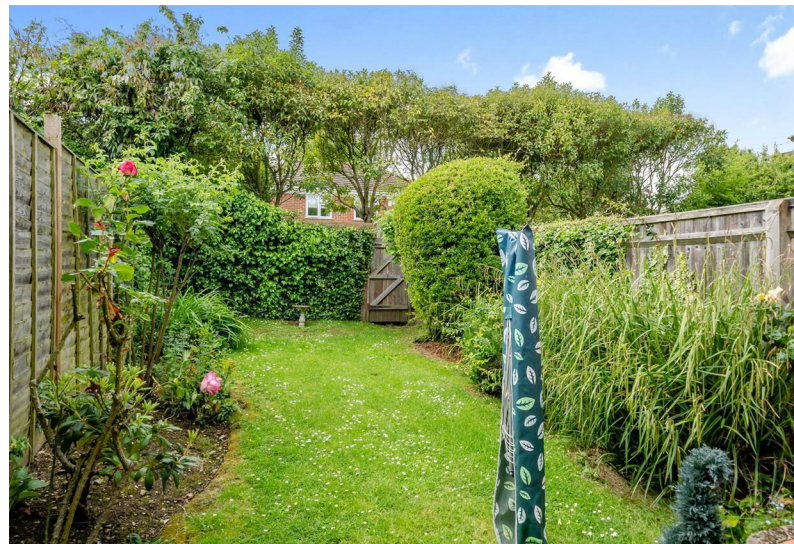
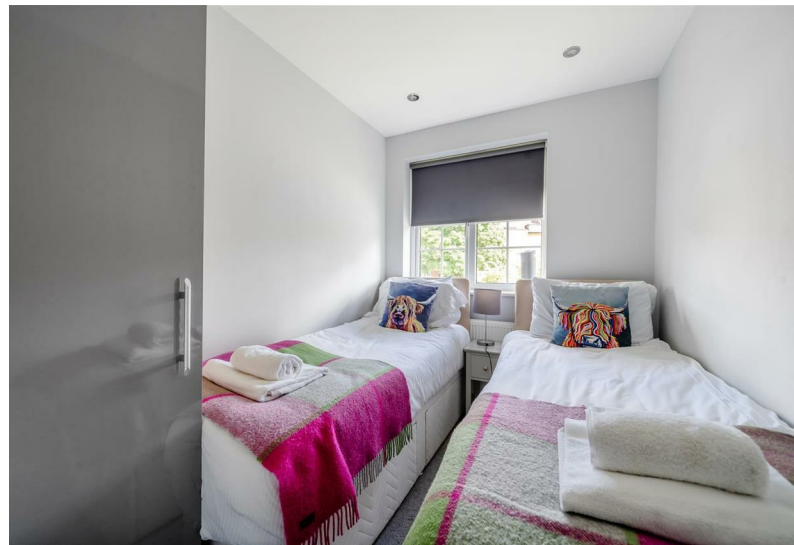
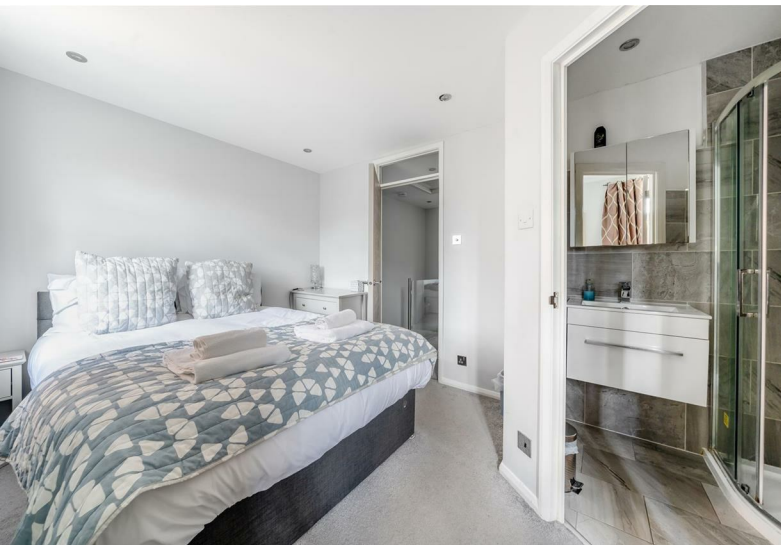
Approximate Internal Area = 822 sq ft / 76.4 sq m
Approximate External Area = 966 sq ft / 89.7 sq m

For identification only - Not to scale



Floor plan produced in accordance with RICS Property Measurement Standards incorporating International Property Measurement Standards (IPMS2 Residential). © nichecom 2024. Produced for Hardings. REF: 1130293.





11 High Street, Windsor, Berkshire, SL4 1LD,
T: 01753 833 118 | E: info@hardings.co.uk
www.hardings.co.uk

