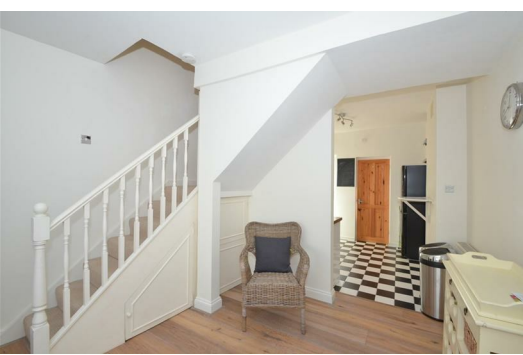




HARDINGS

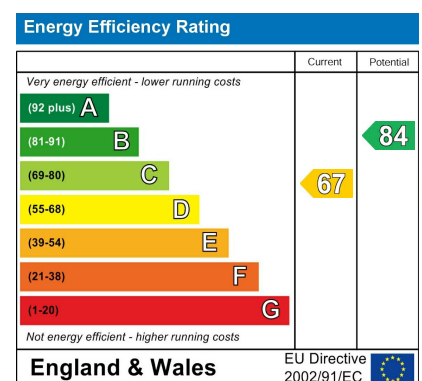


Oxford Road
£1,650 PCM





Two bedroom Victorian cottage. Sought after location close town centre and rail links to London. Sitting room, kitchen/breakfast room, Two double bedrooms, downstairs bathroom. Small south facing courtyard garden.

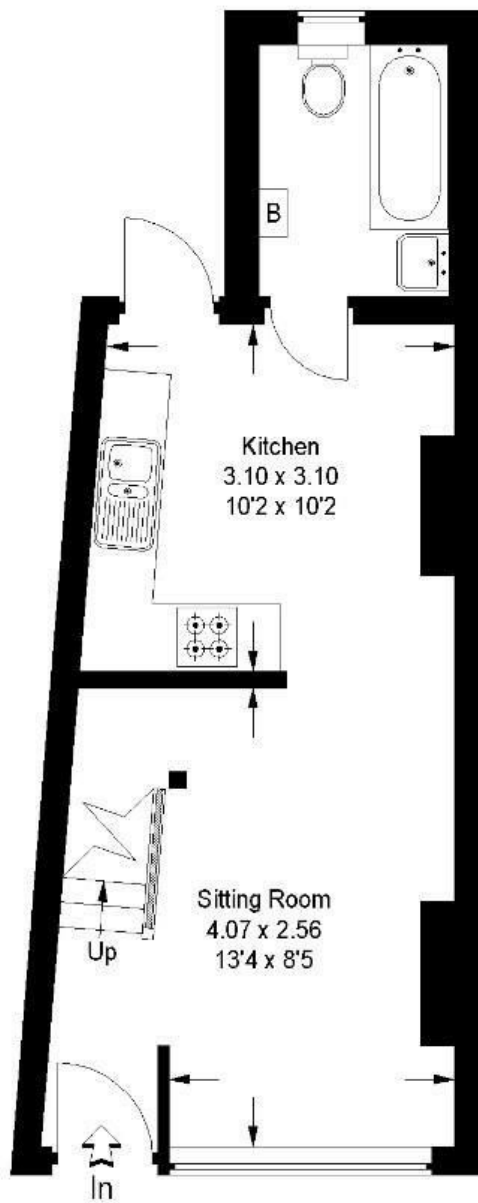


Features

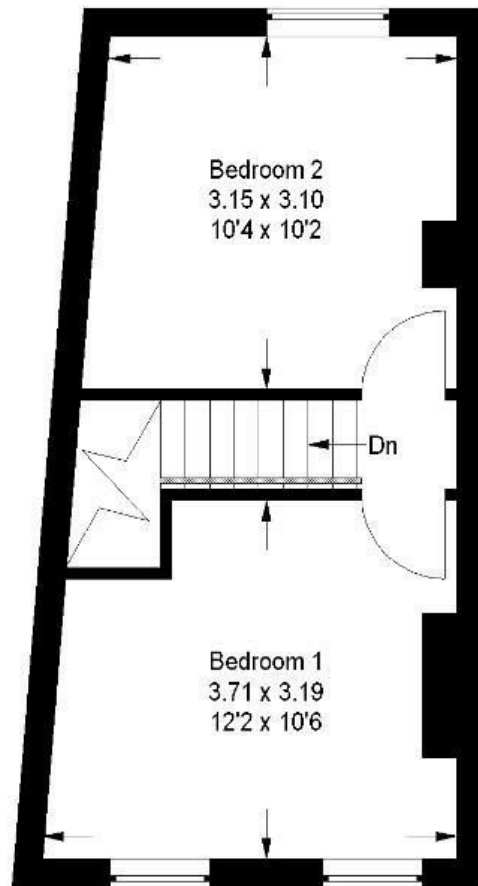
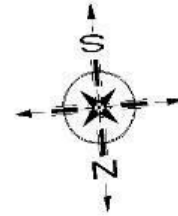
- Two double bedrooms
- Sought after location close to town centre
- Council Band D
- Permit parking
- Unfurnished
- Downstairs bathroom
- South facing courtyard garden
- Gas Central Heating
- Available Mid- August

Oxford Road, Windsor, Berkshire

Approximate Gross Internal Area :-
54 sq m / 583 sq ft



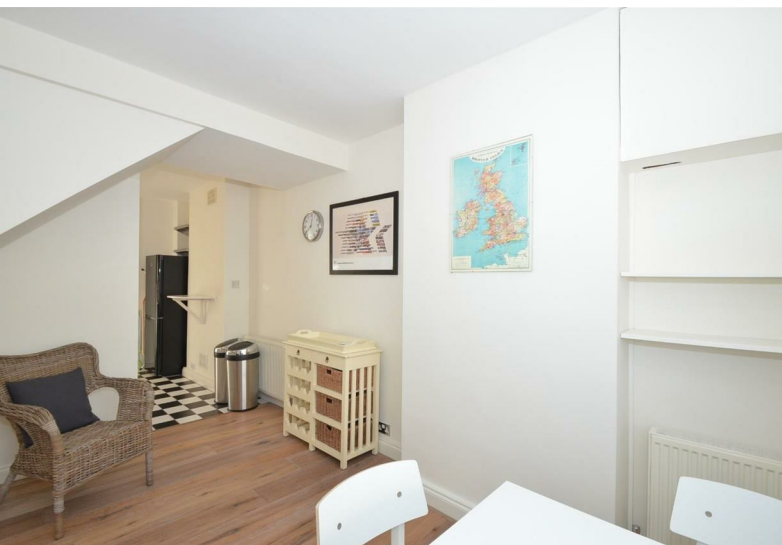
Ground Floor



First Floor

FLOORPLANZ © 2009 01483755510 Ref 62455

This plan is for layout guidance only. Not drawn to scale unless stated. Windows & door openings are approximate. Whilst every care is taken in the preparation of this plan, please check all dimensions, shapes & compass bearings before making any decisions reliant upon them.



11 High Street, Windsor, Berkshire, SL4 1LD,
T: 01753 833 118 | E: info@hardings.co.uk
www.hardings.co.uk

