



HARDINGS




St. Leonards Road
Price Guide £385,000



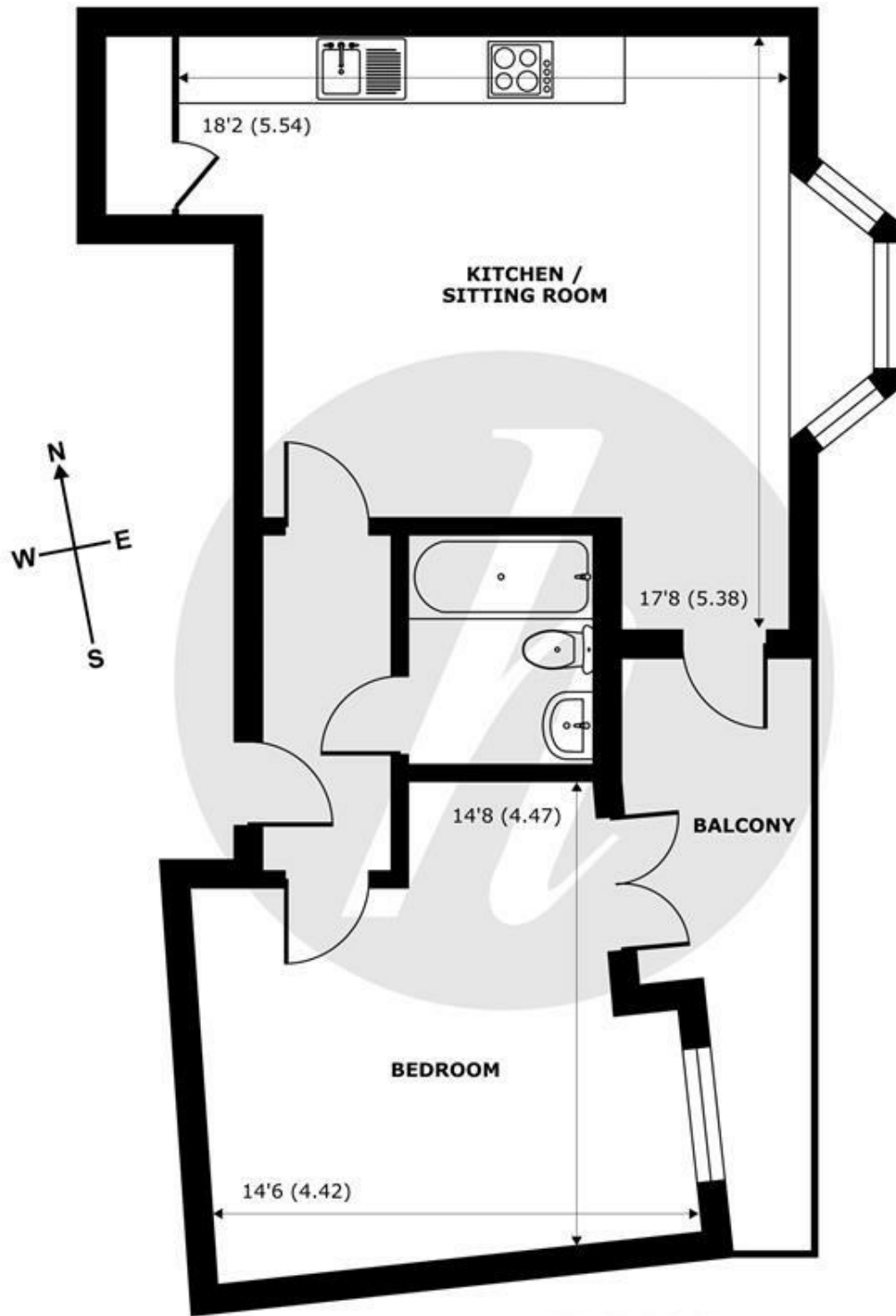


A stunning first floor apartment, located in central location close to the shops, restaurants, cafes and transport links to London. Offering spacious, light and well thought out accommodation featuring stunning balcony accessed from reception and bedroom. The apartment comes with permit parking and no chain.

Energy Efficiency Rating		
	Current	Potential
<i>Very energy efficient - lower running costs</i>		
(92 plus) A		
(81-91) B	81	81
(69-80) C		
(55-68) D		
(39-54) E		
(21-38) F		
(1-20) G		
<i>Not energy efficient - higher running costs</i>		
England & Wales	EU Directive 2002/91/EC 	

Features

- First Floor Apartment
- Bedroom with Access to Balcony
- Town Center
- Short walk to Railway Links and Mainline Stations
- No Chain
- Wonderful Views
- Open Plan Kitchen/Dining Living Room Leading to a Balcony
- Permit Parking
- Bathroom
- Tax Band C



FIRST FLOOR
 abt 650 SQFT (60.3 SQMT)

St Leonards Road, Windsor, SL4

Approximate Internal Area = 543 sq ft / 50.4 sq m
 Approximate External Area = 650 sq ft / 60.3 sq m

For identification only - Not to scale



Floor plan produced in accordance with RICS Property Measurement Standards incorporating International Property Measurement Standards (IPMS2 Residential). © nichecom 2024. Produced for Hardings. REF: 1148341





11 High Street, Windsor, Berkshire, SL4 1LD,
T: 01753 833 118 | E: info@hardings.co.uk
www.hardings.co.uk

