



HARDINGS



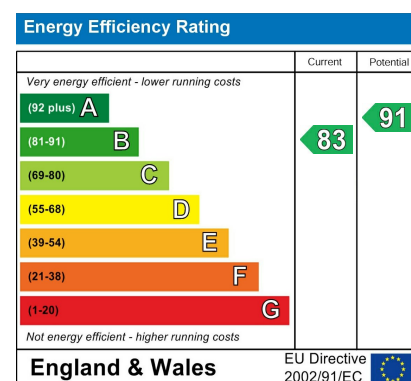
Lammas Court
Price Guide £1,150,000





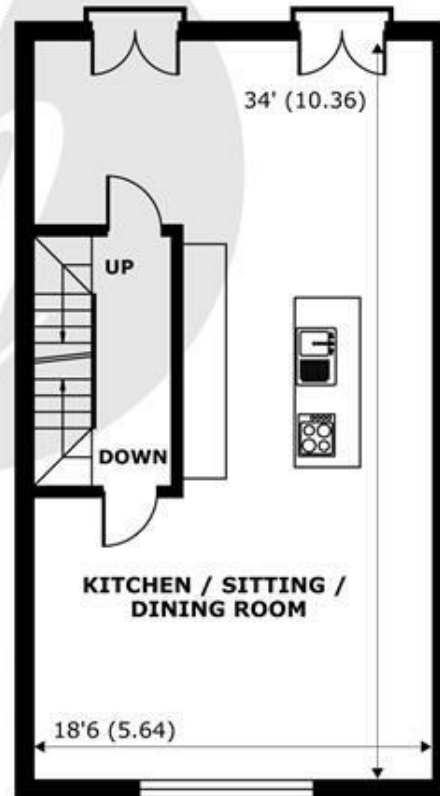
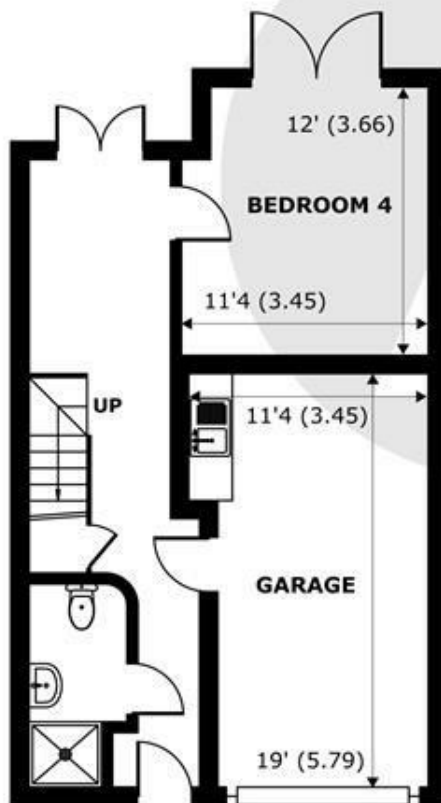
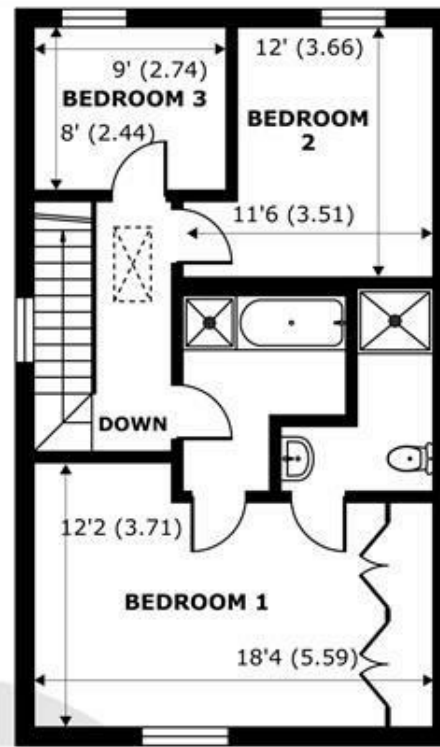
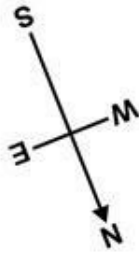
A luxurious 4 bedroom, 3 bathroom end of terrace townhouse located in a quiet residential area in the heart of town, just a short stroll to Windsor Castle, the Long Walk and all the amenities Windsor has to offer.

Beautifully modelled to a high specification, the property features a fabulous open plan kitchen/dining/family room, pretty south facing wraparound courtyard garden, side access, internal garage plus driveway parking for two cars . The property is offered with no onward chain.



Features

- 4 Bedroom Modern Town House
- Garage and Driveway parking
- Stunning Open Plan Kitchen/Dining Room/Living Room
- Castle Views
- Chain Free
- Located in Heart of Windsor Town Centre
- South Facing Wraparound Courtyard Garden
- 3 Bathrooms
- Underfloor Heating Throughout
- Council Tax Band F



Lammas Court, Windsor, SL4

Approximate Internal Area = 1559 sq ft / 144.8 sq m (Exclude Garage)

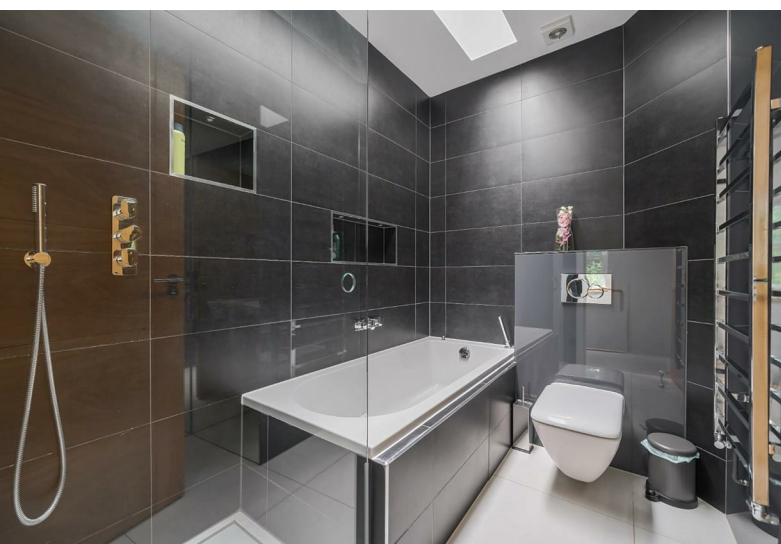
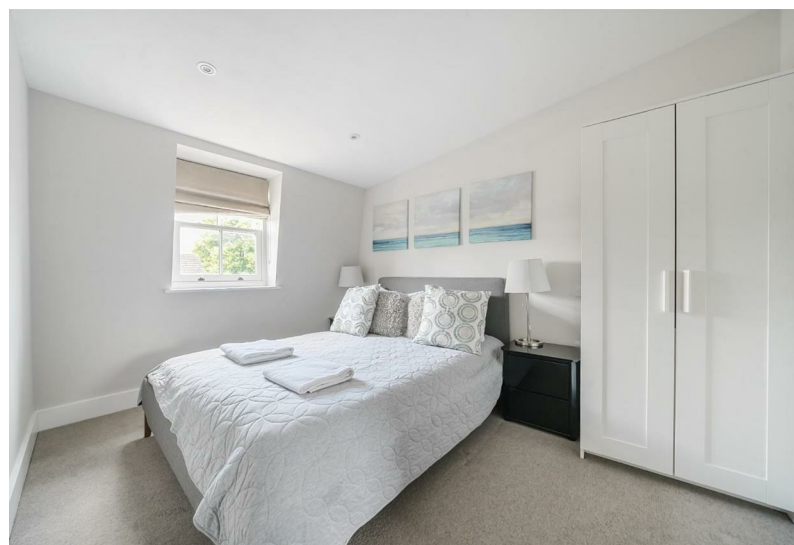
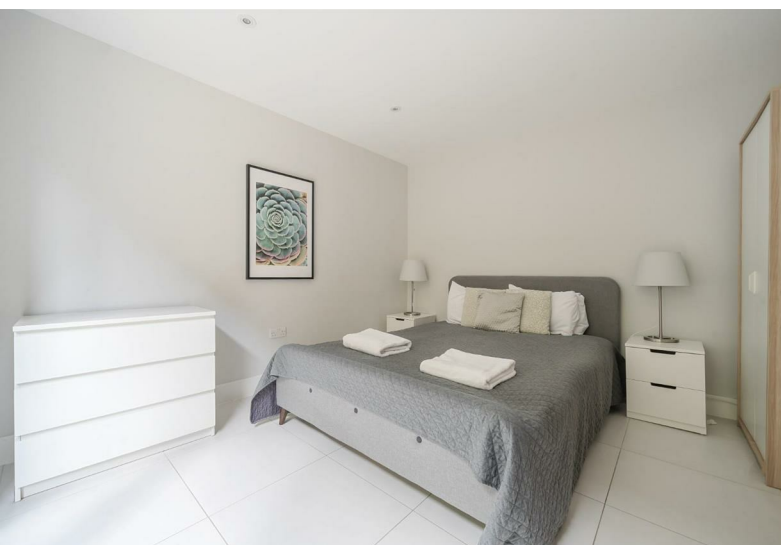
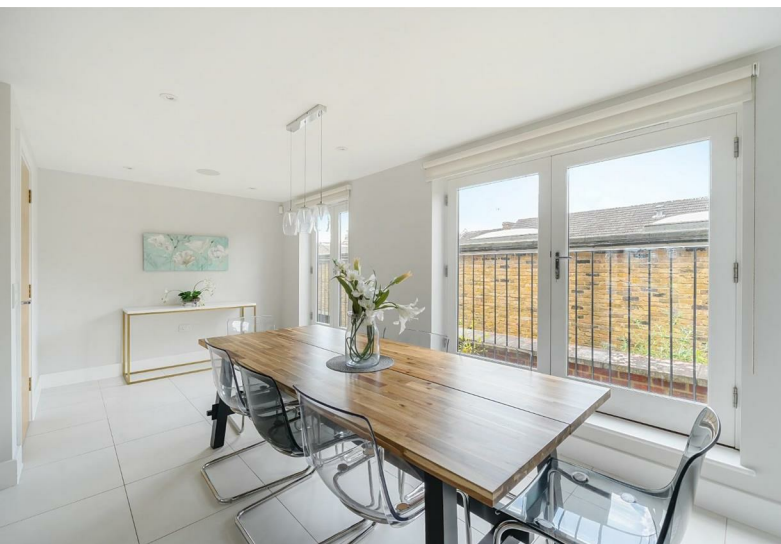
Approximate External Area = 1809 sq ft / 168 sq m (Exclude Garage)

For identification only - Not to scale



Floor plan produced in accordance with RICS Property Measurement Standards incorporating International Property Measurement Standards (IPMS2 Residential). © nichecom 2024. Produced for Hardings. REF: 1148337





11 High Street, Windsor, Berkshire, SL4 1LD,
T: 01753 833 118 | E: info@hardings.co.uk
www.hardings.co.uk

