



HARDINGS



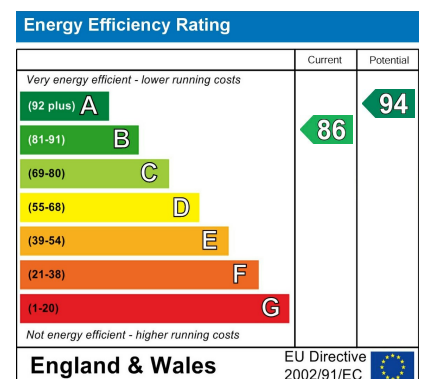
Leopold Place
£2,750 PCM





A three bedroom, three bathroom town house with off street parking and garden. The property is finished to a high standard with quartz work surfaces and Bosch appliances. Bathrooms with Villeroy & Boch sinks and Hansgrohe fixtures and fittings.

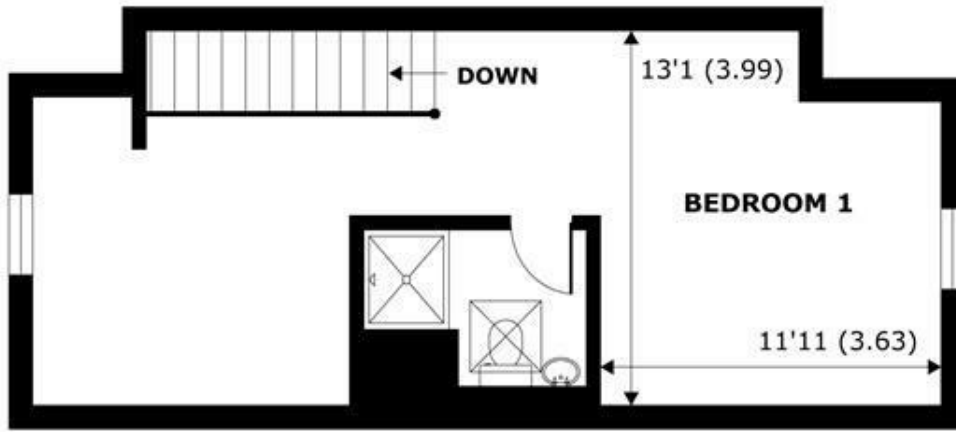
The master bedroom suite on the second floor includes an adjacent room which could be used as a dressing room, study or nursery. There are a further two bedrooms and bathrooms on the first floor.



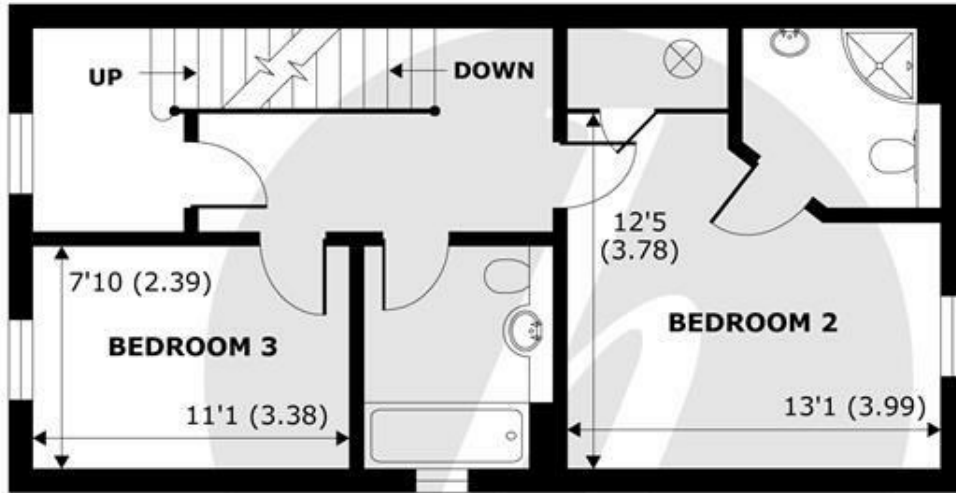
Features

- Three bedroom town house
- Sitting/dining room open plan to kitchen
- Three bathrooms
- Allocated off street parking
- Tax band F & EPC B
- Cloakroom
- Modern development
- Rear garden
- Unfurnished
- Available Now

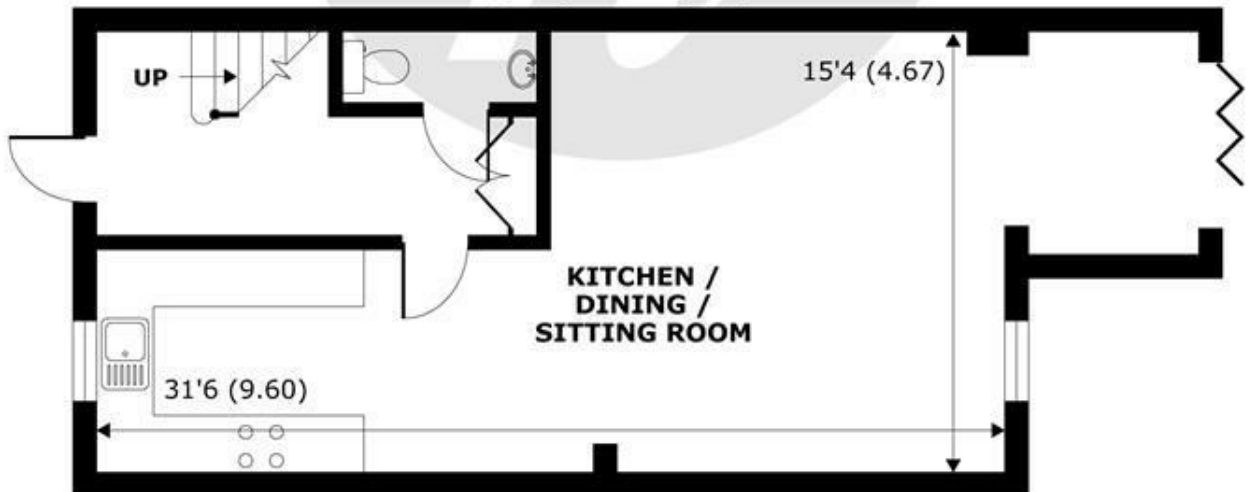
NOT TO SCALE



SECOND FLOOR
abt 480 SQFT (44.6 SQMT)



FIRST FLOOR
abt 577 SQFT (53.6 SQMT)



GROUND FLOOR
abt 642 SQFT (59.6 SQMT)

APPROX. GROSS EXTERNAL FLOOR AREA 1699 SQFT 157.8 SQM

St. Leonards Road, Windsor, SL4



HARDINGS

Whilst every attempt has been made to ensure the accuracy of the floor plan contained here, measurements of doors, windows and rooms are approximate and no responsibility is taken for any error, omission or misstatement. These plans are for representation purposes only as defined by RICS Code of Measuring Practice and should be used as such by any prospective purchaser. Specifically no guarantee is given on the total square footage of the property if quoted on this plan. Any figure given is for initial guidance only and should not be relied on as a basis of valuation.

Copyright nichecom.co.uk 2016 Produced for Hardings ref. 104359



11 High Street, Windsor, Berkshire, SL4 1LD,
T: 01753 833 118 | E: info@hardings.co.uk
www.hardings.co.uk

