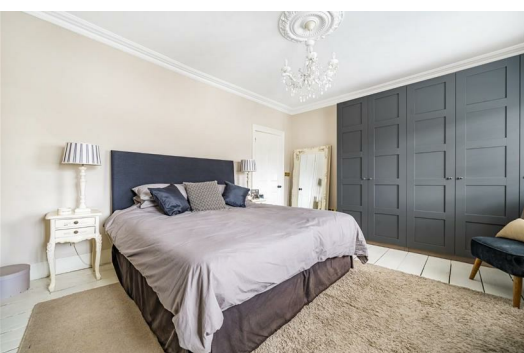




HARDINGS

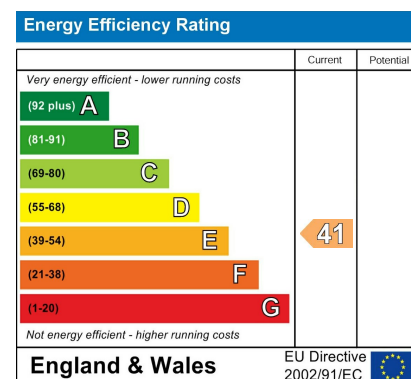


Adelaide Square
£3,250 PCM



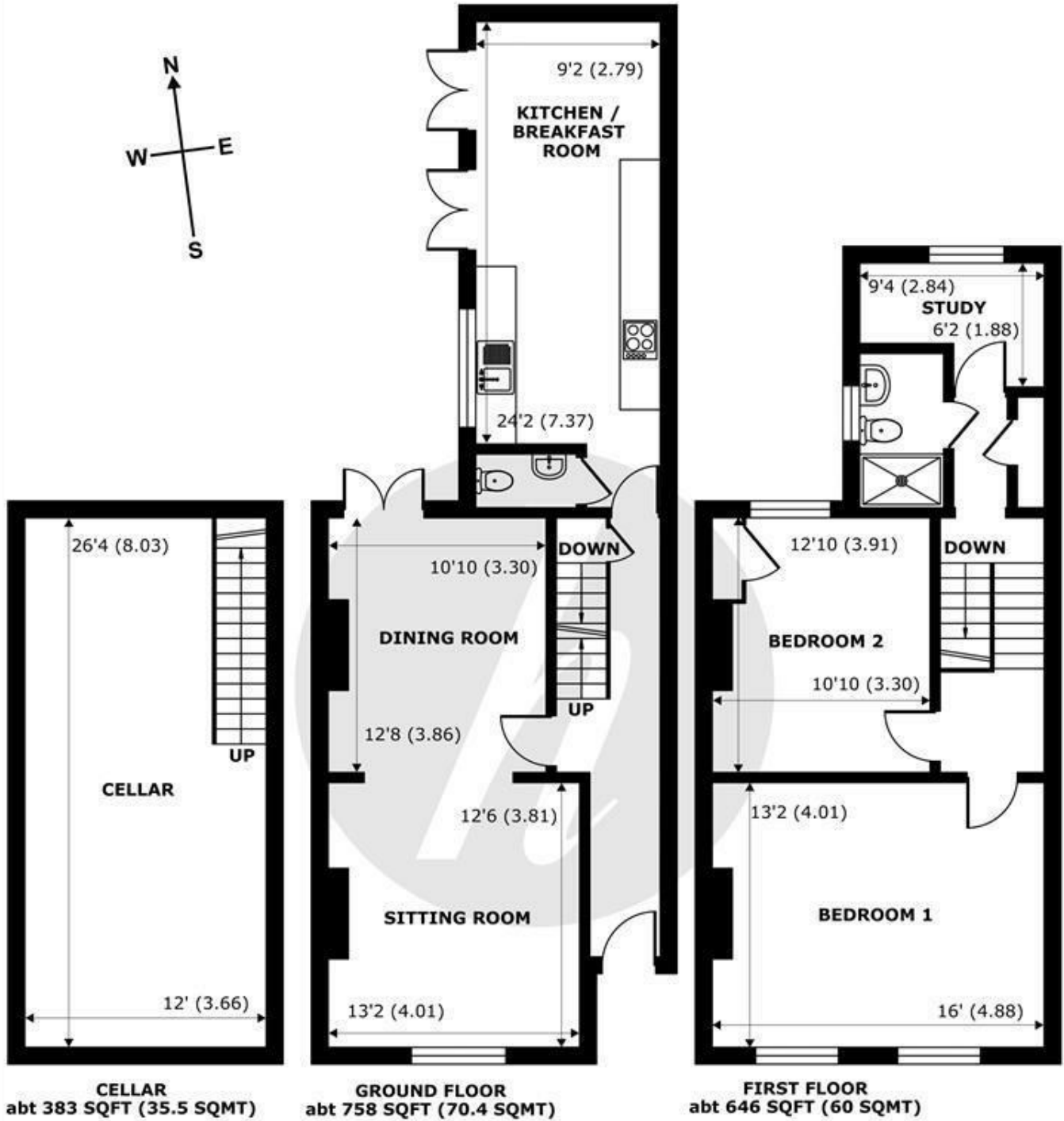


A charming 2/3 bedroom Grade II listed Georgian terraced house located on a pretty road in the sought after 'Golden Triangle', just a short walk to the shops, restaurants, mainline railway stations (Waterloo & Paddington) and the Long Walk. Refurbished and remodelled by the current owners to create light and contemporary open-plan accommodation, the property further benefits from a study, landscaped courtyard garden, open plan kitchen/breakfast room and a cellar.



Features

- 2/3 Bedroom Grade II listed Georgian terraced house
- Modern Decor Throughout
- Spacious Through Lounge
- Available 1st August
- Underground Cellar
- Large open-plan kitchen
- Landscaped Garden
- Offered Unfurnished
- White Goods Intergrated
- Downstairs WC



Adelaide Square, Windsor, SL4

Approximate Internal Area = 1511 sq ft / 140.3 sq m

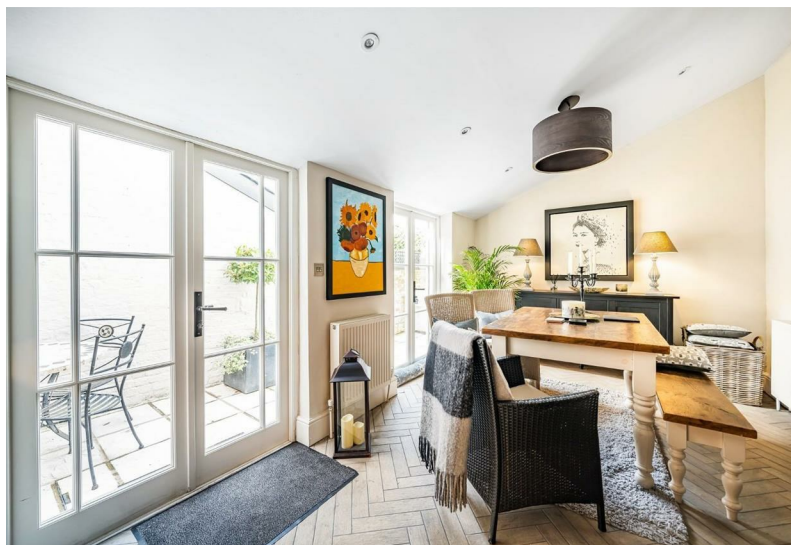
Approximate External Area = 1787 sq ft / 166 sq m

For identification only - Not to scale



Floor plan produced in accordance with RICS Property Measurement Standards incorporating International Property Measurement Standards (IPMS2 Residential). © nichecom 2024. Produced for Hardings. REF: 1109489





11 High Street, Windsor, Berkshire, SL4 1LD,
T: 01753 833 118 | E: info@hardings.co.uk
www.hardings.co.uk

