



HARDINGS




Clarence Road
Guide Price £360,000



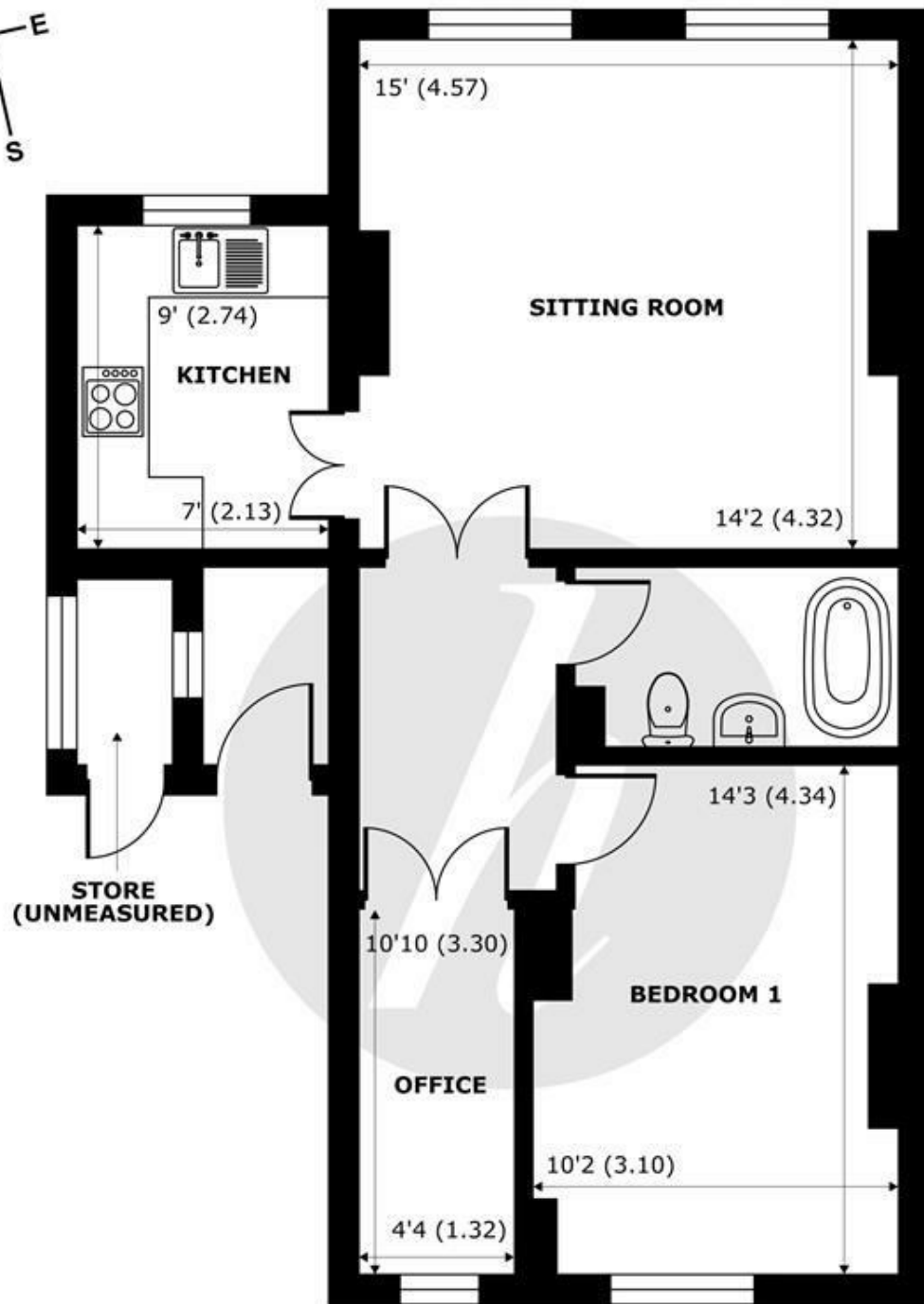


A beautifully presented and spacious one bedroom first floor conversion flat, forming part of an imposing period town house, located in the heart of Windsor town centre. Just a short walk to the shops, restaurants, cafes and mainline rail links to London, the property further benefits from communal garden, study and utility room.

Energy Efficiency Rating		
	Current	Potential
<i>Very energy efficient - lower running costs</i>		
(92 plus) A		
(81-91) B		
(69-80) C		
(55-68) D	63	76
(39-54) E		
(21-38) F		
(1-20) G		
<i>Not energy efficient - higher running costs</i>		
England & Wales	EU Directive 2002/91/EC 	

Features

- Interior Designed First Floor Conversion Flat
- 1 Bedroom
- Town Centre Location
- Short Walk to Mainline Rail Links to London (waterloo & Paddington)
- Communal Garden
- Study
- Utility Room



FIRST FLOOR
abt 710 SQFT (65.9 SQMT)

Clarence Road, Windsor, SL4

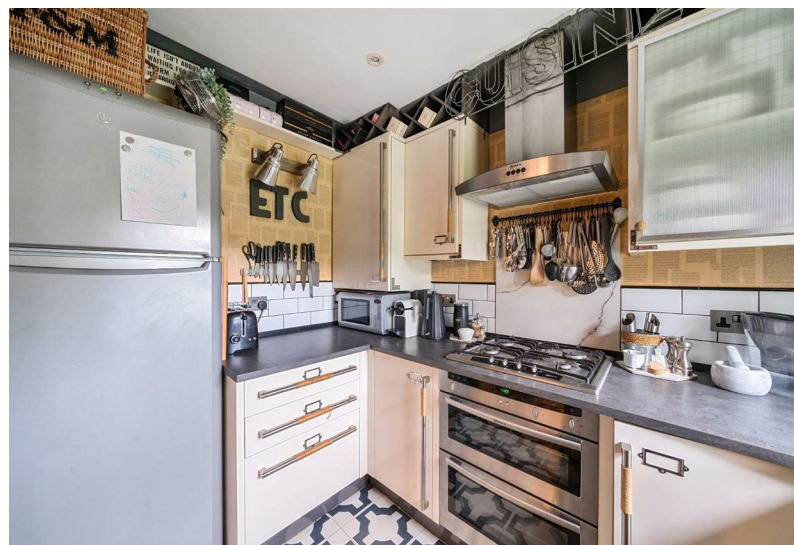
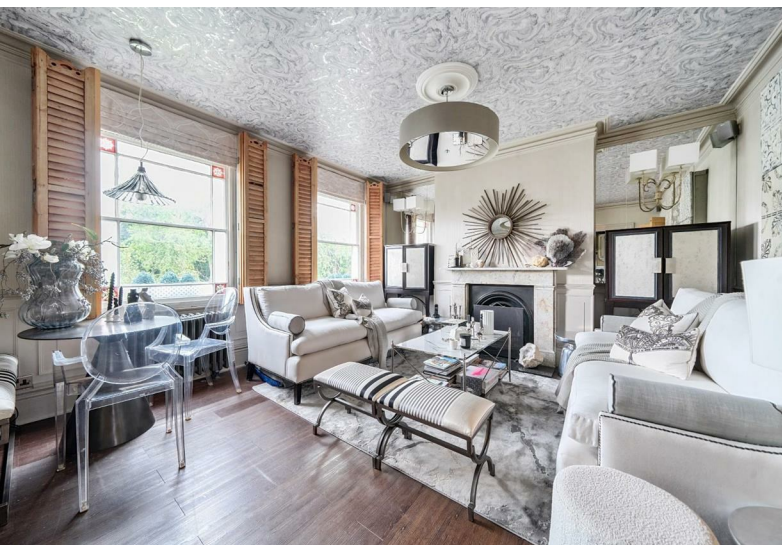
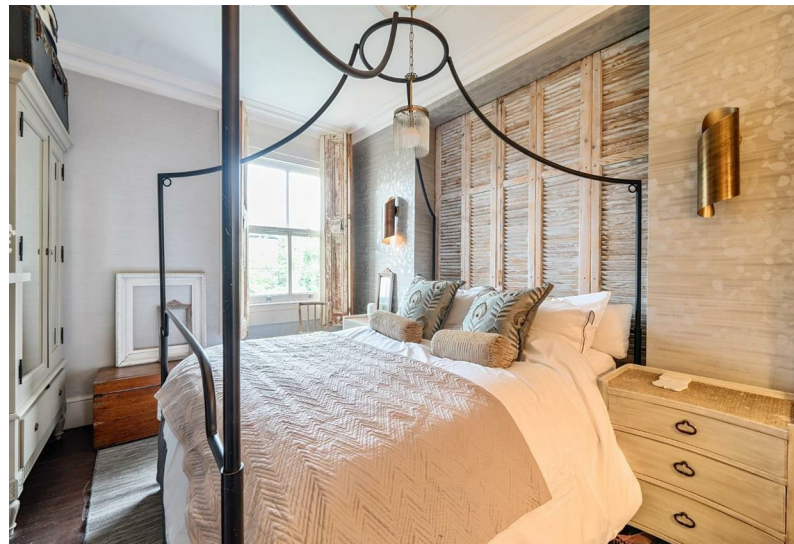
Approximate Internal Area = 613 sq ft / 56.9 sq m (excludes store)
Approximate External Area = 710 sq ft / 65.9 sq m (excludes store)

For identification only - Not to scale



Floor plan produced in accordance with RICS Property Measurement Standards incorporating International Property Measurement Standards (IPMS2 Residential). © nichecom 2024. Produced for Hardings. REF: 1135868





11 High Street, Windsor, Berkshire, SL4 1LD,
T: 01753 833 118 | E: info@hardings.co.uk
www.hardings.co.uk

