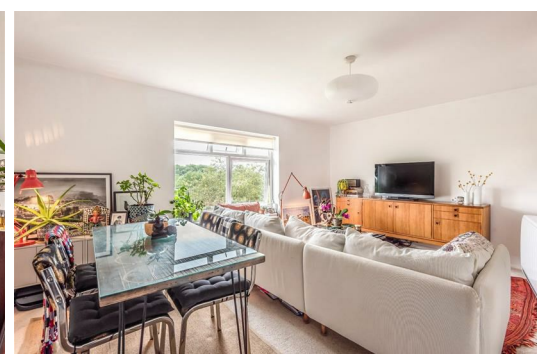
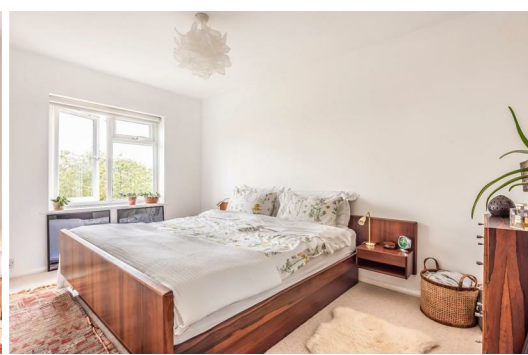




HARDINGS

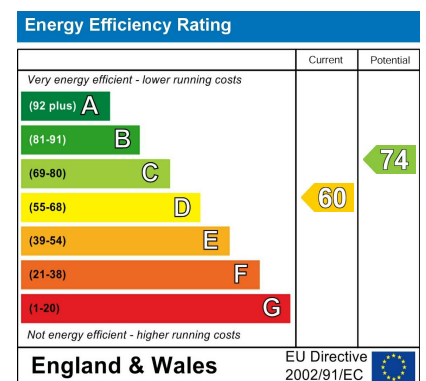


Chiltern Court
£1,450 PCM



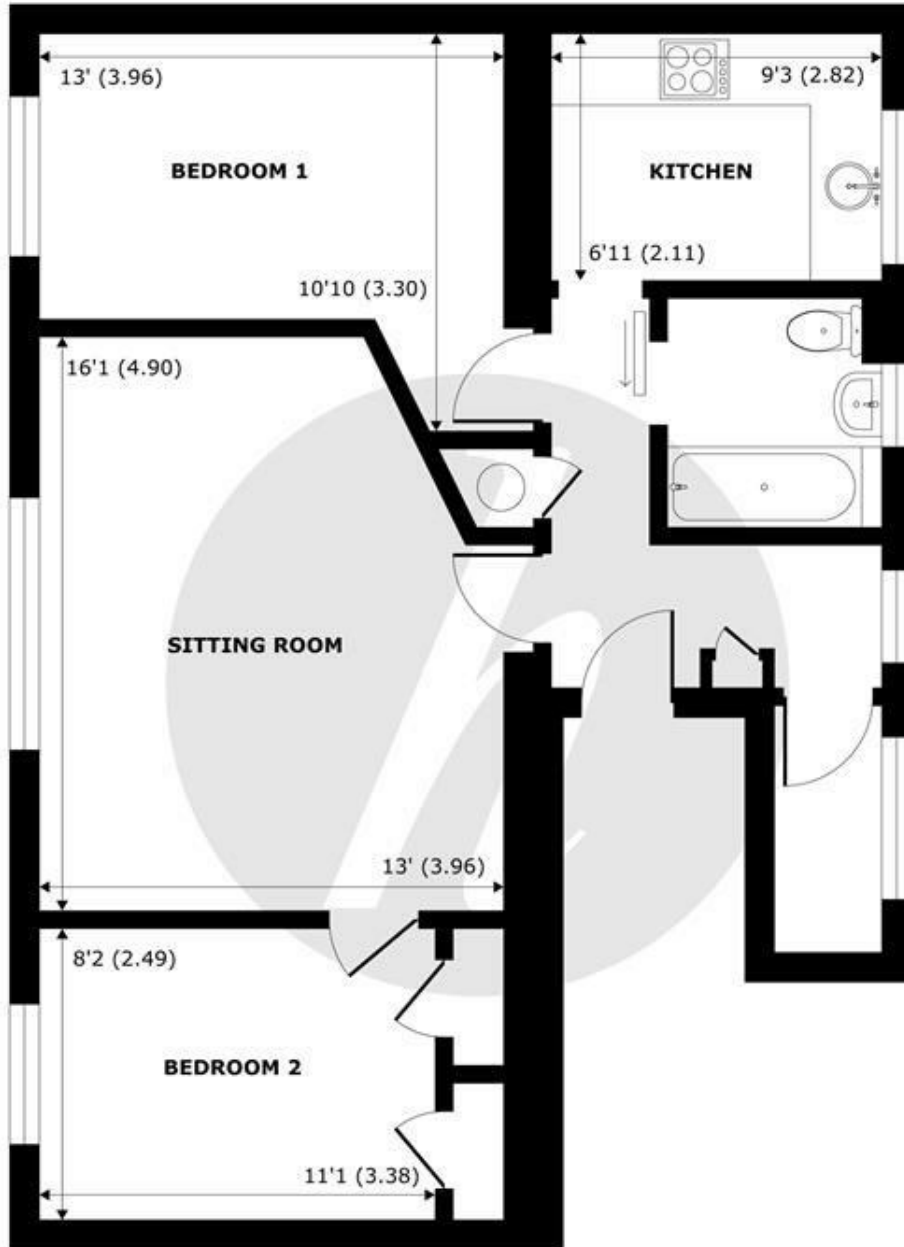
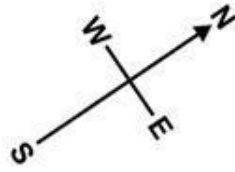


A two bedroom, second floor apartment situated in a prime location close to Windsor town centre, with easy access to shops, bars and restaurants. Excellent transport links to London. Finished to a high standard.



Features

- Two bedroom apartment
- Modern kitchen
- Gated parking
- Comes with a garage
- Located on the second floor
- Unfurnished
- Integrated appliances
- Tax band D & EPC D



GROUND FLOOR
abt 771 SQFT (72 SQMT)

Fawcett Road, Windsor, SL4

Approximate Internal Area = 661 sq ft / 61.4 sq m

Approximate External Area = 771 sq ft / 72 sq m

For identification only - Not to scale



Floor plan produced in accordance with RICS Property Measurement Standards incorporating International Property Measurement Standards (IPMS2 Residential). © n'checon 2020. Produced for Hardings. REF:





11 High Street, Windsor, Berkshire, SL4 1LD,
T: 01753 833 118 | E: info@hardings.co.uk
www.hardings.co.uk

