



HARDINGS

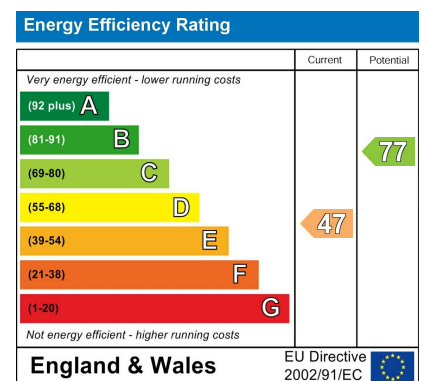


Queens Road
£2,995 PCM





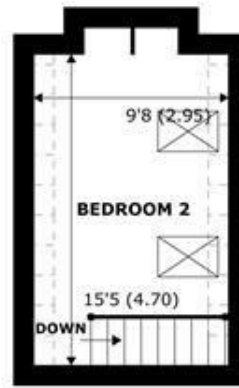
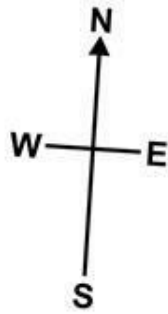
Elegant Victorian villa, maintaining many original features, in a popular part of the Town. Decorated to a high spec with plenty of space for family living. Great links to London and easy access to shops, bars and restaurants in Windsor Town Centre.



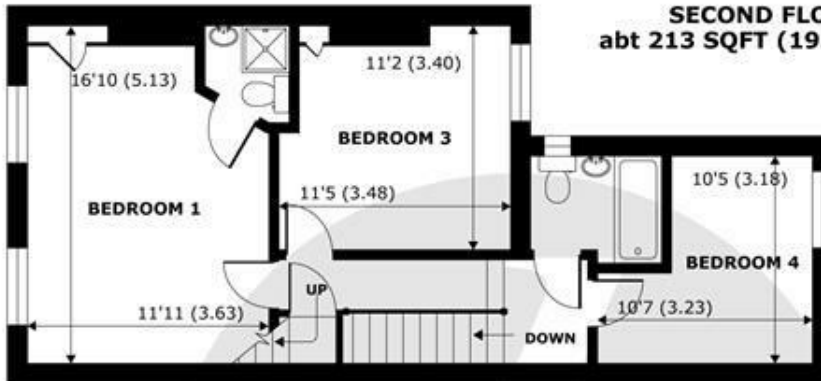
Features

- Very modern style
- Separate Kitchen/Dining areas
- Additional space that could work well as an office
- Permit parking
- Stylish kitchen
- 3 good sized bedrooms, one ensuite
- Cellar
- Tax Band F & EPC E

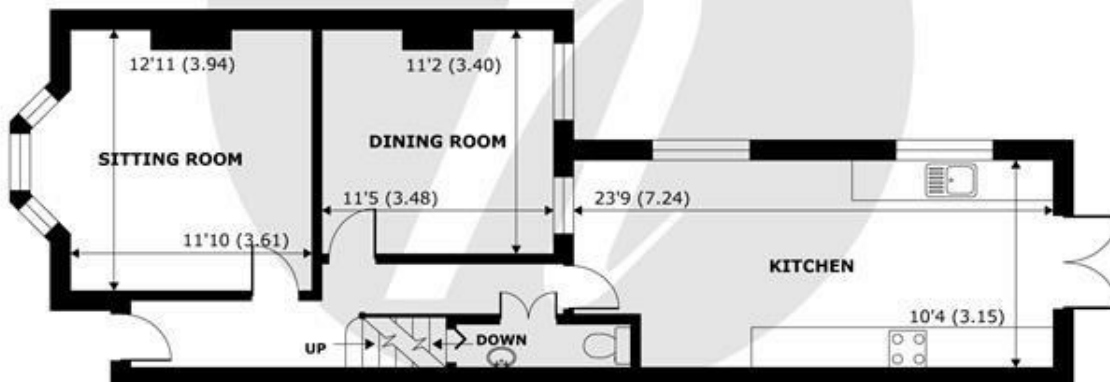
NOT TO SCALE



SECOND FLOOR
abt 213 SQFT (19.7 SQMT)



FIRST FLOOR
abt 674 SQFT (62.6 SQMT)



GROUND FLOOR
abt 796 SQFT (73.9 SQMT)



LOWER GROUND FLOOR
abt 152 SQFT (14.1 SQMT)

APPROX. GROSS INTERNAL FLOOR AREA 1430 SQFT 132.8 SQM
(EXCLUDE RESTRICTED HEADHEIGHT)

APPROX. GROSS EXTERNAL FLOOR AREA 1835 SQFT 170.4 SQM

Queens Road, Windsor, SL4



Whilst every attempt has been made to ensure the accuracy of the floor plan contained here, measurements of doors, windows and rooms are approximate and no responsibility is taken for any error, omission or misstatement. These plans are for representation purposes only as defined by RICS Code of Measuring Practice and should be used as such by any prospective purchaser. Specifically no guarantee is given on the total square footage of the property if quoted on this plan. Any figure given is for initial guidance only and should not be relied on as a basis of valuation.

Copyright nichecom.co.uk 2019 Produced for Hardings ref. 421501



11 High Street, Windsor, Berkshire, SL4 1LD,
T: 01753 833 118 | E: info@hardings.co.uk
www.hardings.co.uk

