



# HARDINGS



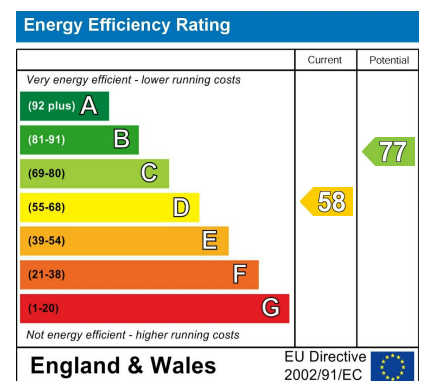
Arthur Road  
Price Guide £525,000





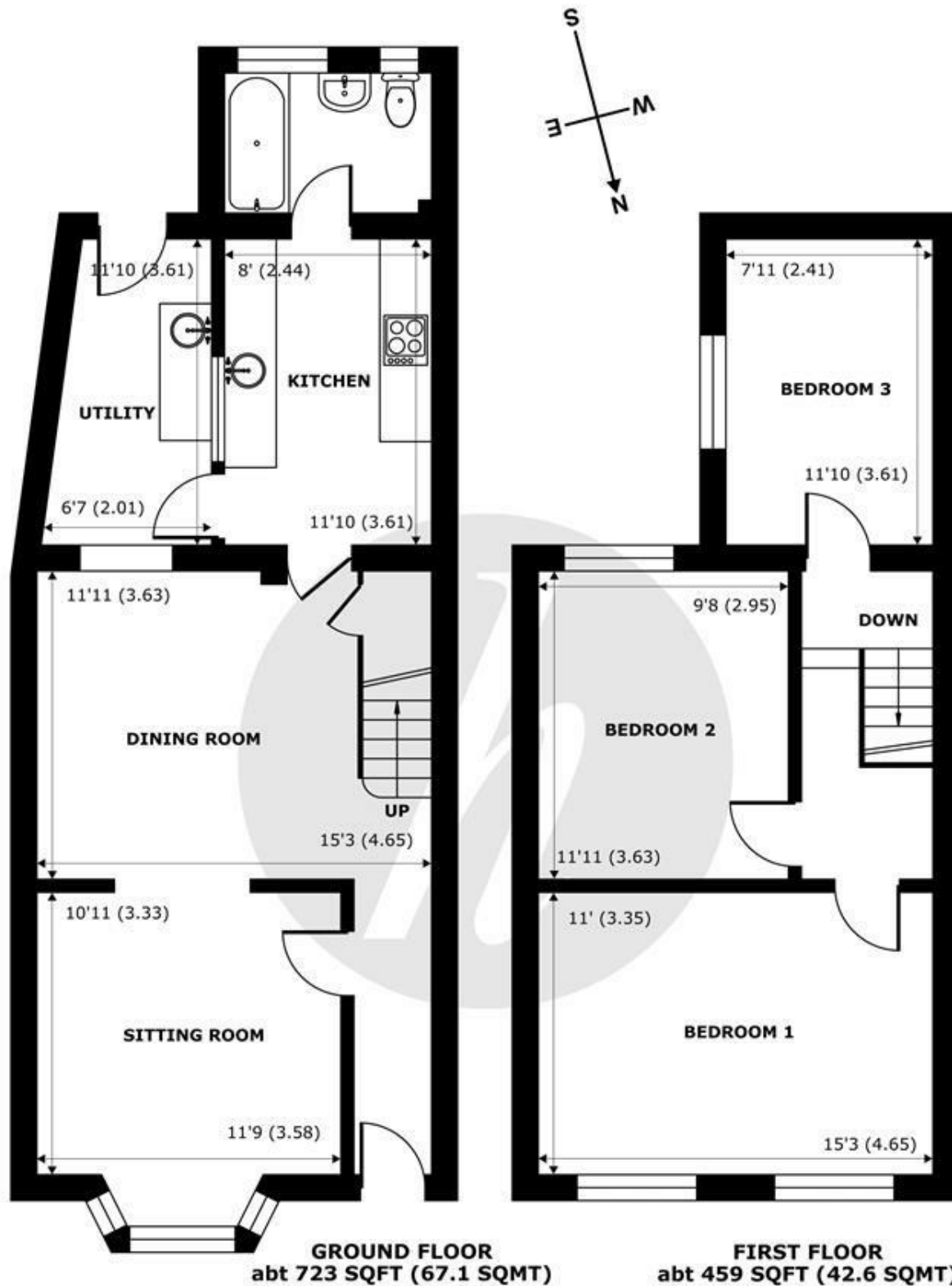


A 3 bedroom bay fronted end of terrace period property located in Windsor town centre just a short walk to local shops, cafes and restaurants, The River Thames, mainline rail connections to London (Waterloo & Paddington) and excellent local schools. The property benefits from high ceilings throughout, a south-facing garden and separate utility room to the rear.



## Features

- Bay-Fronted Period Property
- Utility Room
- South-Facing Garden
- Close to Both Railway Stations
- Short Walk to Local Amenities
- 3 Bedrooms
- Double Reception Room
- Council Tax Band: D
- High Ceilings
- Permit Parking



## Arthur Road, Windsor, SL4

Approximate Internal Area = 1061 sq ft / 98.5 sq m  
 Approximate External Area = 1288 sq ft / 119.6 sq m

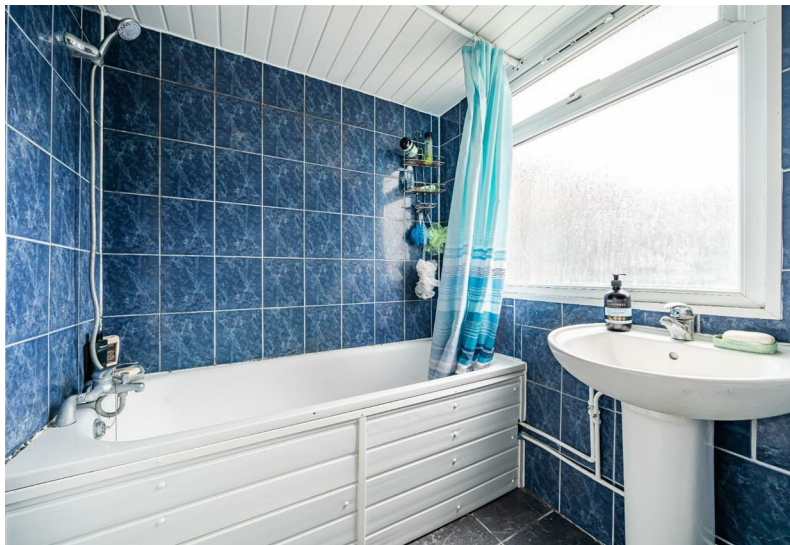
For identification only - Not to scale



Floor plan produced in accordance with RICS Property Measurement Standards incorporating International Property Measurement Standards (IPMS2 Residential). © nichecom 2023. Produced for Hardings. REF: 969325







11 High Street, Windsor, Berkshire, SL4 1LD,  
T: 01753 833 118 | E: [info@hardings.co.uk](mailto:info@hardings.co.uk)  
[www.hardings.co.uk](http://www.hardings.co.uk)

