



**HARDINGS**

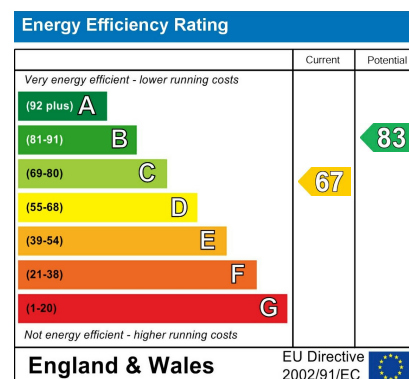


Alexandra Road  
Guide Price £775,000



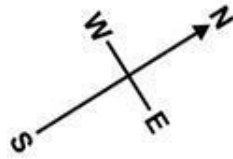


An attractive 4 bedroom terraced period villa located on the fringes of the Golden Triangle, just a short walk to Windsor's bustling town centre and mainline rail connections to London (Waterloo & Paddington). With potential to extend further (stpp), the property also benefits from an eat-in kitchen, cloakroom and brick outhouse.

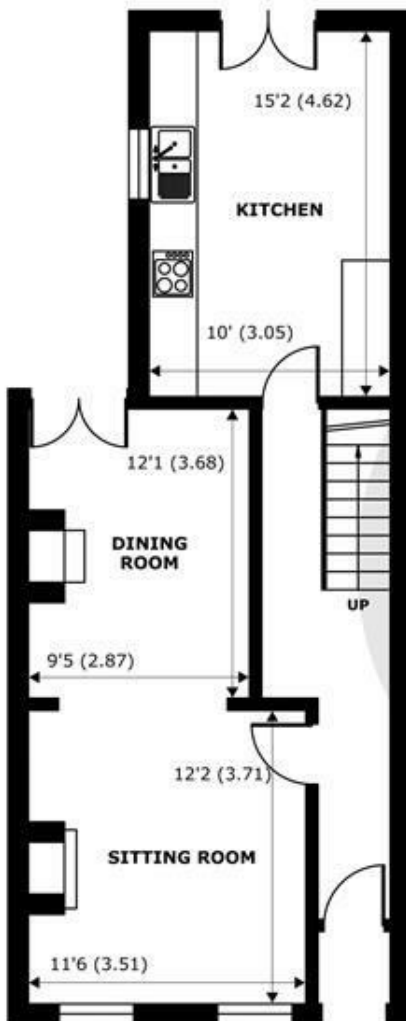


## Features

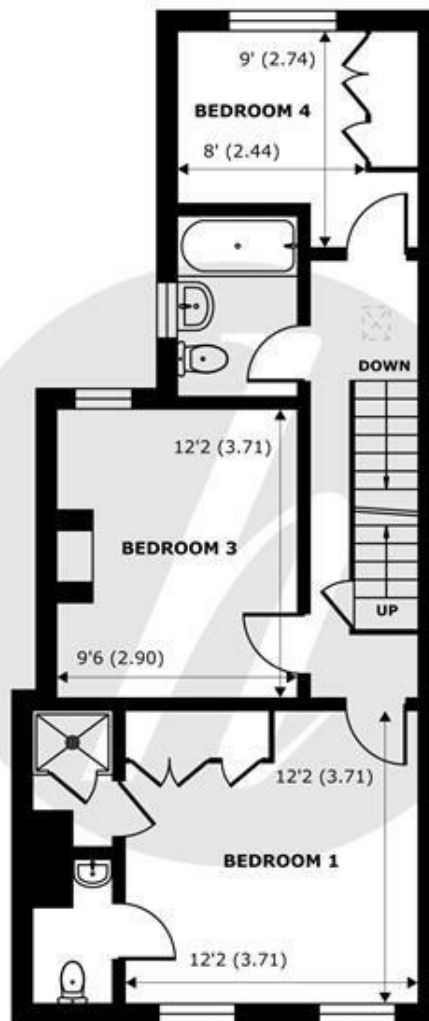
- 4 Bedroom Freehold Period Villa
- Double Reception
- Low Maintenance West Facing Garden
- Potential to do extend (stpp)
- Council Tax: E
- 2 Bathrooms (1x ensuite)
- Eat in Kitchen
- Brick Outhouse
- Cloakroom
- Town Centre Location



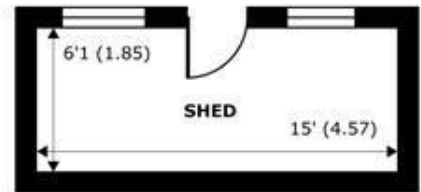
Denotes restricted head height



**GROUND FLOOR**  
abt 622 SQFT (57.7 SQMT)



**FIRST FLOOR**  
abt 636 SQFT (59 SQMT)



**OUTBUILDING**  
abt 128 SQFT (11.8 SQMT)



**SECOND FLOOR**  
abt 354 SQFT (32.8 SQMT)

## Alexandra Road, Windsor, SL4

Approximate Internal Area = 1202 sq ft / 111.6 sq m (Exclude Outbuilding)

Approximate External Area = 1512 sq ft / 140.4 sq m (Exclude Outbuilding)

Limited Use Area(s) = 65 sq ft / 6 sq m

Total = 1267 sq ft / 117.6 sq m

For identification only - Not to scale



Floor plan produced in accordance with RICS Property Measurement Standards incorporating International Property Measurement Standards (IPMS2 Residential). © nichecom 2024. Produced for Hardings. REF: 1109495.





11 High Street, Windsor, Berkshire, SL4 1LD,  
T: 01753 833 118 | E: [info@hardings.co.uk](mailto:info@hardings.co.uk)  
[www.hardings.co.uk](http://www.hardings.co.uk)

