



HARDINGS




Alma Road
Guide Price £1,095,000



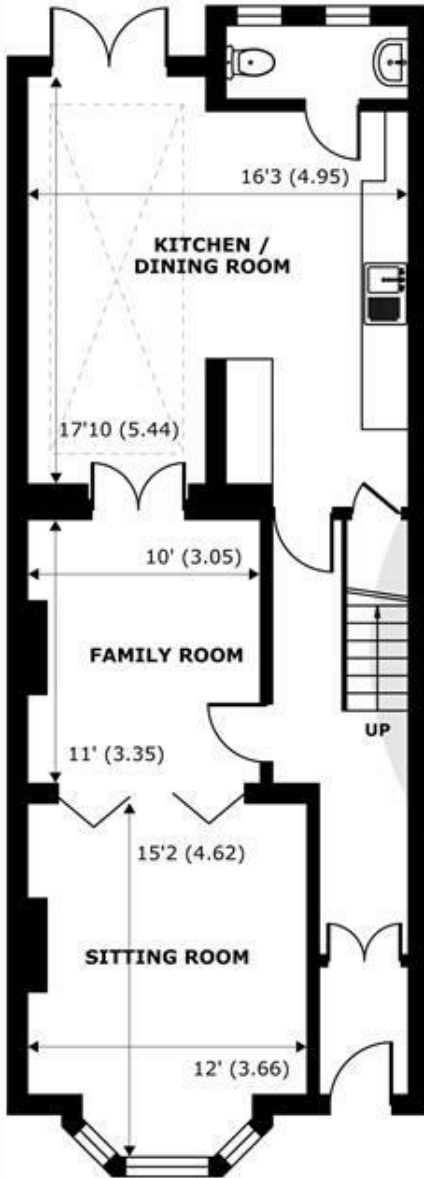
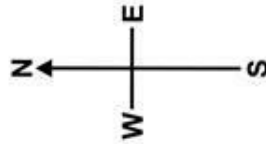


A beautifully presented 4 bedroom Victorian town house with spacious accommodation arranged over 3 floors, that's been remodelled and improved to create an attractive blend of period features and contemporary style. Situated in this prestigious tree lined town centre location, the property features a superb vaulted glazed kitchen extension and has the unusual benefit of off- street parking and a cellar.

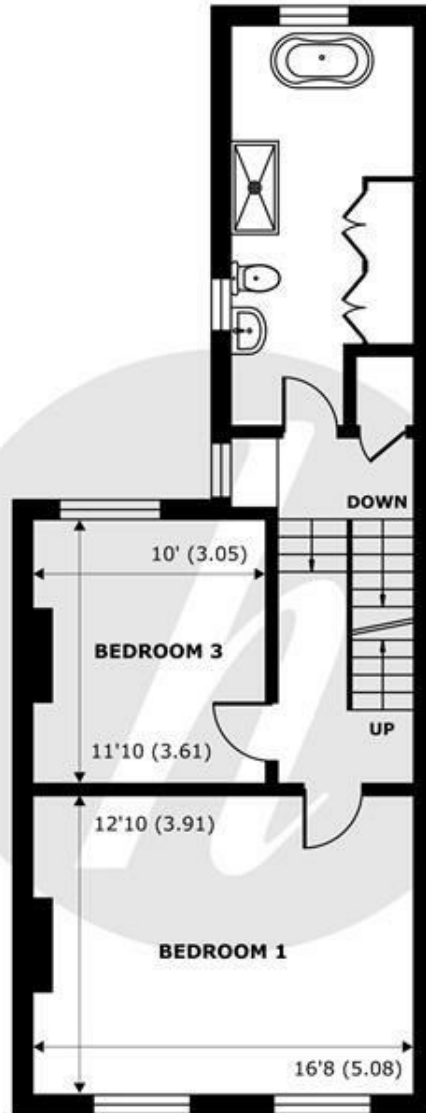
Energy Efficiency Rating		Current	Potential
Very energy efficient - lower running costs			
(92 plus) A			
(81-91) B			83
(69-80) C			
(55-68) D		61	
(39-54) E			
(21-38) F			
(1-20) G			
Not energy efficient - higher running costs			
England & Wales		EU Directive 2002/91/EC 	

Features

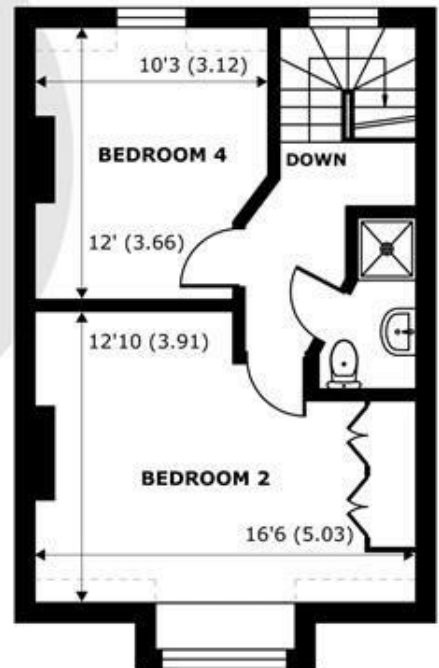
- Off Street Parking
- Entrance Hall
- Through Reception
- Town Centre Location
- Cellar
- 4 Bedroom, 2 bathroom Town House
- Downstairs Cloakroom
- Extended Kitchen
- Beautiful Period Features
- Decked Garden



GROUND FLOOR
abt 856 SQFT (79.5 SQMT)



FIRST FLOOR
abt 675 SQFT (62.7 SQMT)



SECOND FLOOR
abt 489 SQFT (45.4 SQMT)

Denotes restricted head height

Alma Road, Windsor, SL4

Approximate Internal Area = 1714 sq ft / 187.6 sq m

Approximate External Area = 2020 sq ft / 187.6 sq m

Limited Use Area(s) = 17 sq ft / 1.5 sq m

For identification only - Not to scale



Floor plan produced in accordance with RICS Property Measurement Standards incorporating International Property Measurement Standards (IPMS2 Residential). © nichecom 2024. Produced for Hardings. REF: 1097625.





11 High Street, Windsor, Berkshire, SL4 1LD,
T: 01753 833 118 | E: info@hardings.co.uk
www.hardings.co.uk

