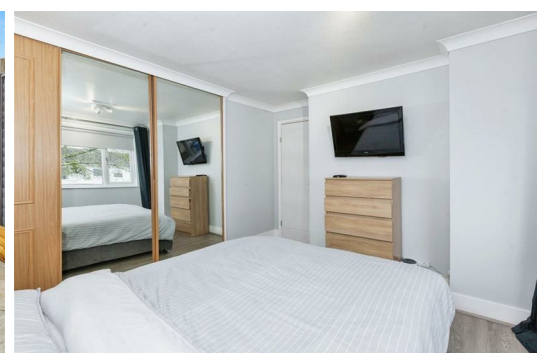
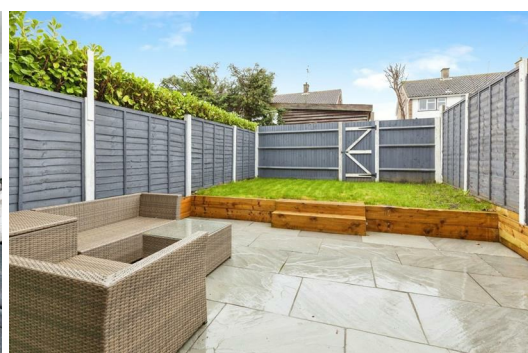




HARDINGS

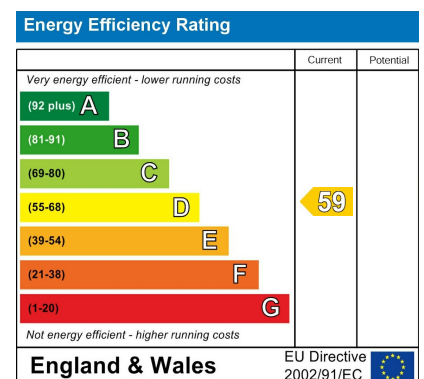


Ruddlesway
£2,195 Per Month





A well-presented, three bedroom house located in West Windsor, close to Oakley Green. Features include a modern fitted kitchen, spacious lounge and low-maintenance private garden. Offered furnished or unfurnished to suit.



Features

- Three bedroom house
- Short drive to Windsor town centre
- Downstairs W/C
- Generously sized rooms
- Mid-terrace
- Modern kitchen
- Furnished or unfurnished
- Tax Band E & EPC D



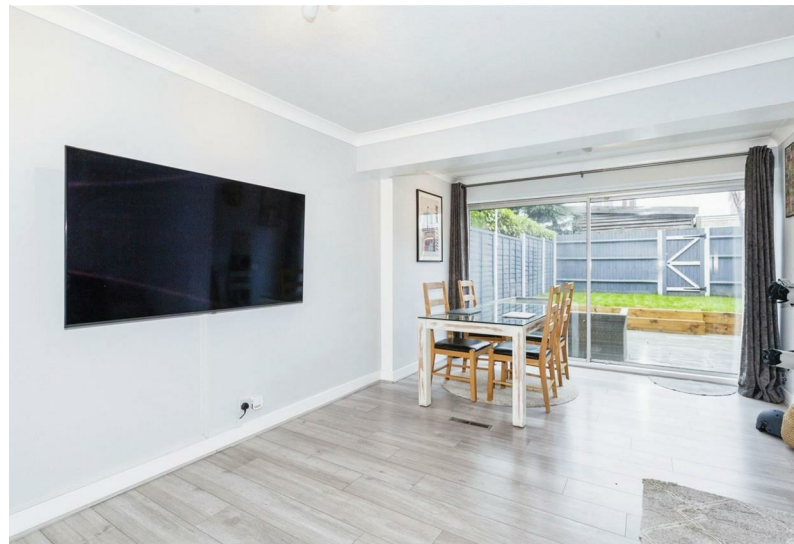
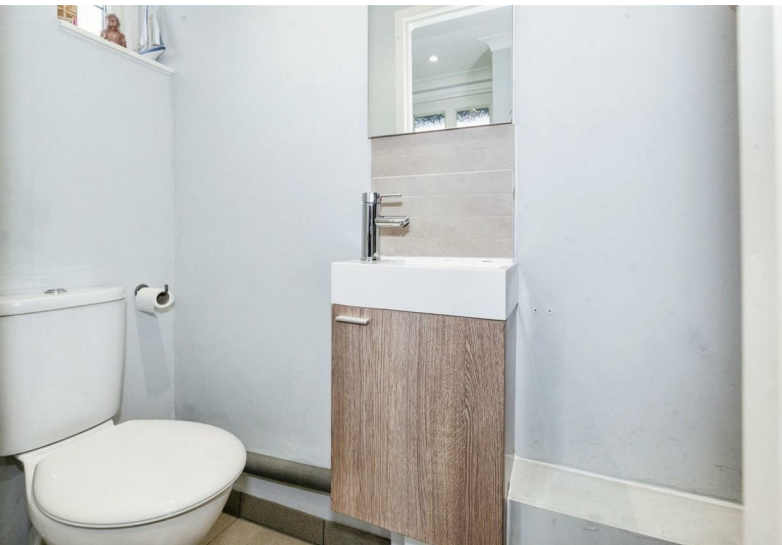
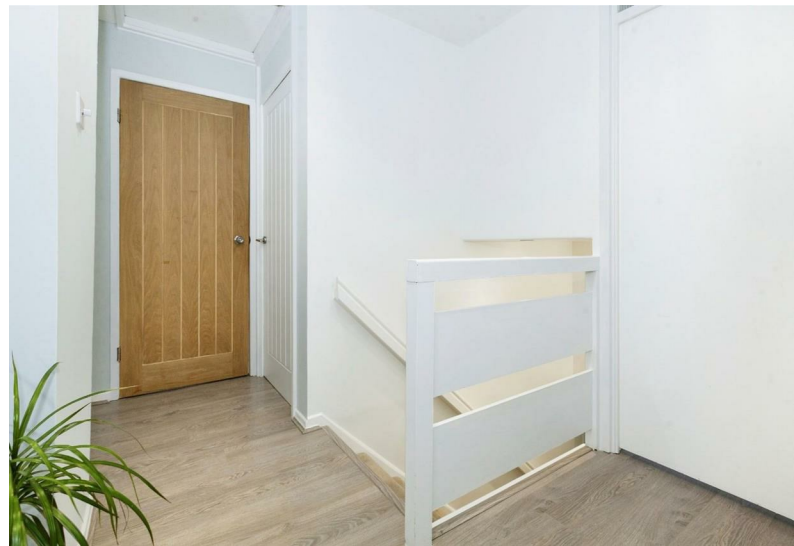
Ground Floor

630 sq ft / 59 sq m

First Floor

415 sq ft / 39 sq m

Internal Floor Area = 947 sq ft / 88 sq m
Store = 30 sq ft / 2.8 sq m



11 High Street, Windsor, Berkshire, SL4 1LD,
T: 01753 833 118 | E: info@hardings.co.uk
www.hardings.co.uk

