



HARDINGS

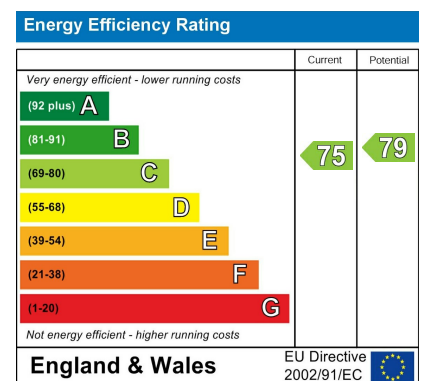


Fountain Gardens
Price Guide £375,000



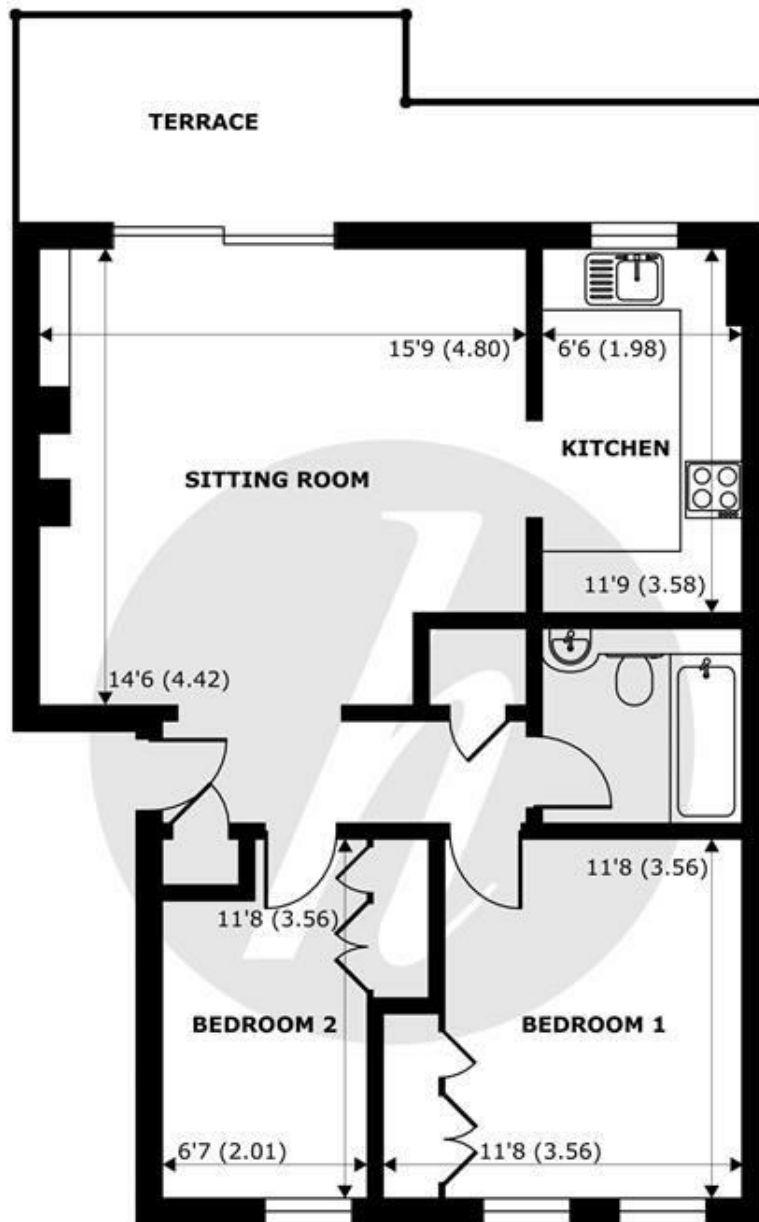
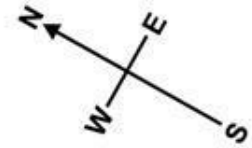


A very stylish 2 bedroom ground floor apartment located in this popular residential development close to The Long Walk, both railway stations with direct links to London and array of shops, bars and restaurants in Windsor town centre. Recently refurbished and reconfigured by the current owner, the property also benefits from a terrace, garage and parking.



Features

- Ground Floor Apartment in Desirable Development
- Well Maintained Communal Gardens
- Garage
- Popular Development
- Immaculate Condition Throughout
- 2 Bedrooms
- Off-Street Parking
- Covered Terrace
- Short Walk to Windsor Town Centre, The Long Walk & The Great Park
- Golden Triangle



GROUND FLOOR
abt 640 SQFT (59.5 SQMT)

Fountain Gardens, Windsor, SL4

Approximate Internal Area = 640 sq ft / 59.5 sq m

Approximate External Area = 732 sq ft / 68 sq m

For identification only - Not to scale



Floor plan produced in accordance with RICS Property Measurement Standards incorporating International Property Measurement Standards (IPMS2 Residential). © nichecom 2024. Produced for Hardings. REF: 1076203.





11 High Street, Windsor, Berkshire, SL4 1LD,
T: 01753 833 118 | E: info@hardings.co.uk
www.hardings.co.uk

