



HARDINGS

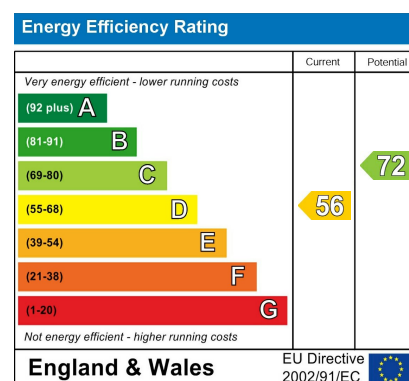


Devereux Road
Guide Price £850,000



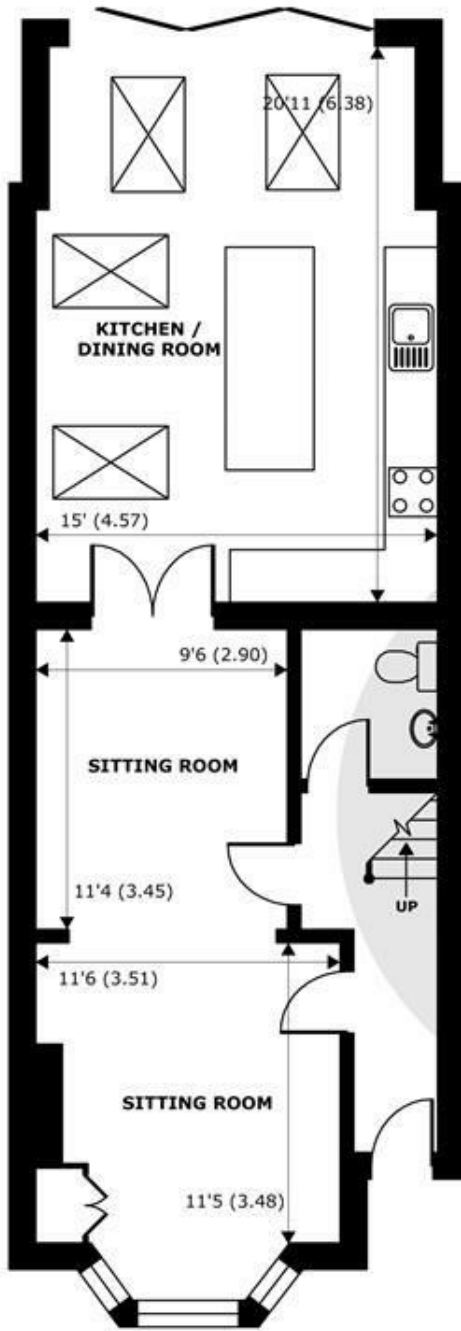


A stunning 4 bedroom period villa located on a popular residential road in the heart of Windsor town centre with its array of shops, bars, restaurants and mainline rail links to London. The property, which has been extended and remodelled to feature a fabulous eat-in kitchen with bi-fold doors leading onto low maintenance garden further benefits from a converted loft and second bathroom.

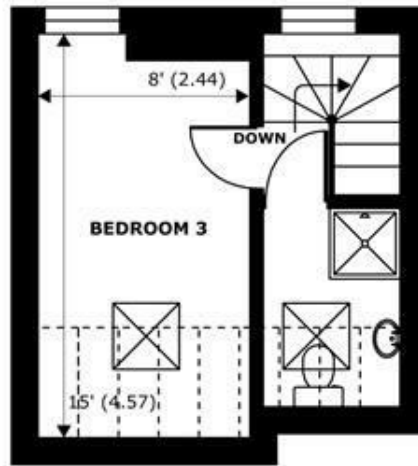


Features

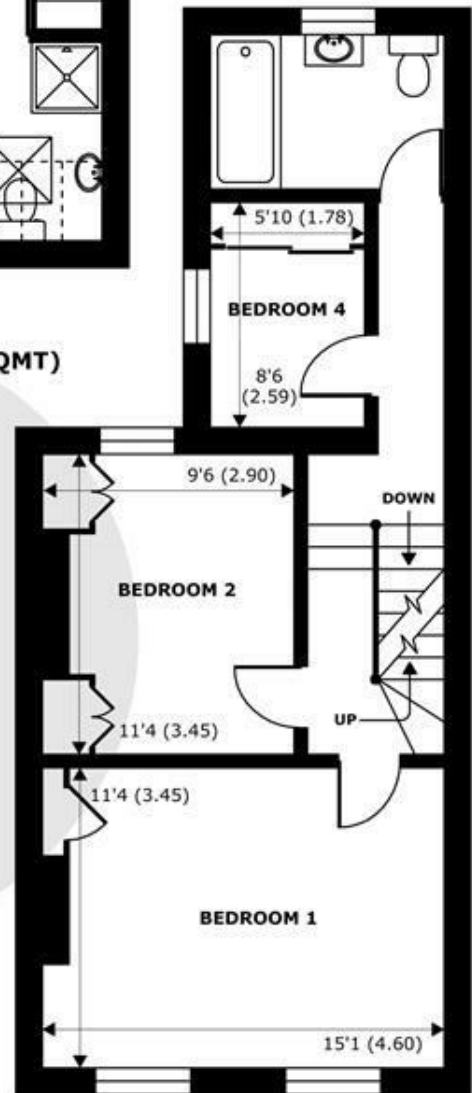
- Period Villa
- 4 Bedrooms
- Light and Spacious Living Accommodation
- Permit Parking
- Superb Eat in Kitchen/Dining Room
- Popular Town Centre Location
- Extended and Remodelled
- 2 Bathrooms
- Low Maintenance Courtyard Garden
- Downstairs Cloakroom



GROUND FLOOR
abt 802 SQFT (74.5 SQMT)



SECOND FLOOR
abt 264 SQFT (24.5 SQMT)



FIRST FLOOR
abt 604 SQFT (56 SQMT)

Denotes restricted head height

Devereux Road, Windsor, SL4

Approximate Internal Area = 1322 sq ft / 122.8 sq m

Approximate External Area = 1670 sq ft / 155 sq m

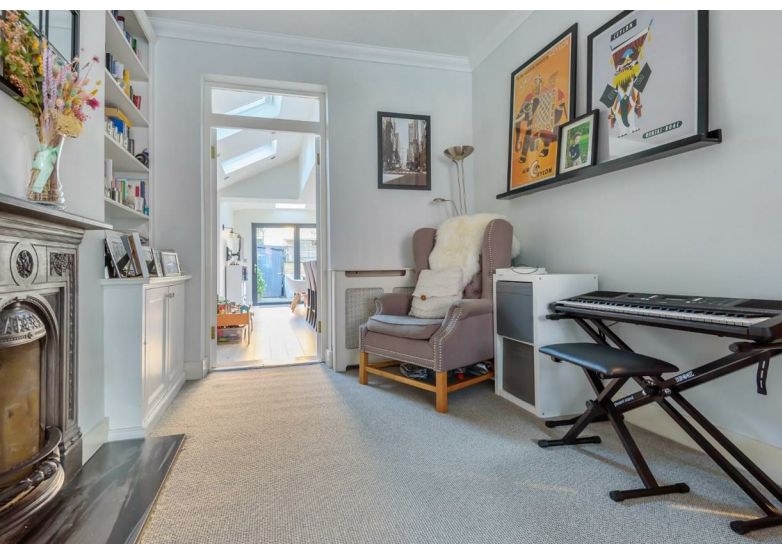
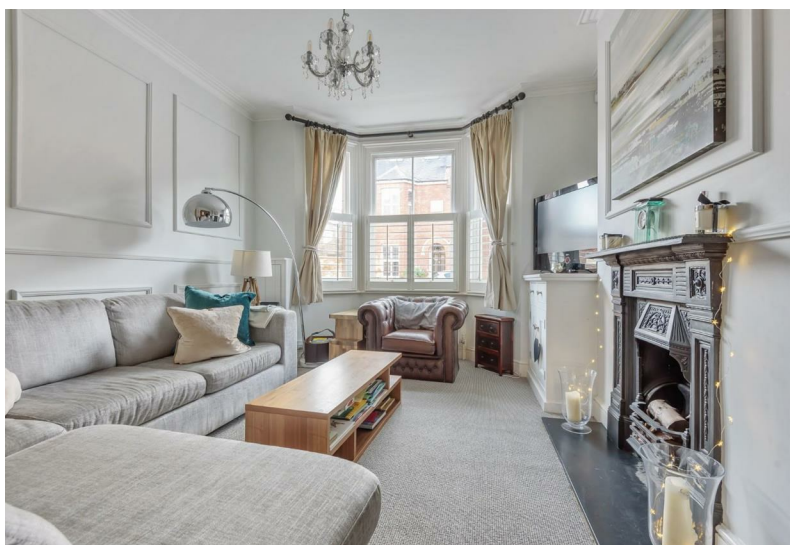
Limited Use Area(s) = 46 sq ft / 4.3 sq m

For identification only - Not to scale



Floor plan produced in accordance with RICS Property Measurement Standards incorporating International Property Measurement Standards (IPMS2 Residential). © nichecom 2022. Produced for Hardings. REF: 802578





11 High Street, Windsor, Berkshire, SL4 1LD,
T: 01753 833 118 | E: info@hardings.co.uk
www.hardings.co.uk

