



HARDINGS

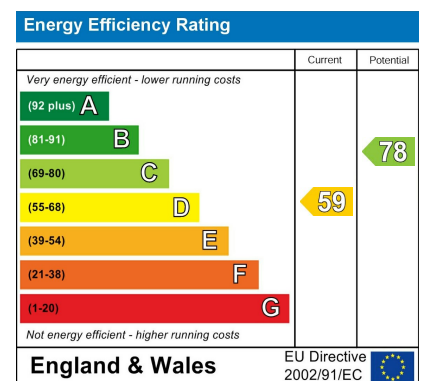


Queens Road
Offers Invited £900,000





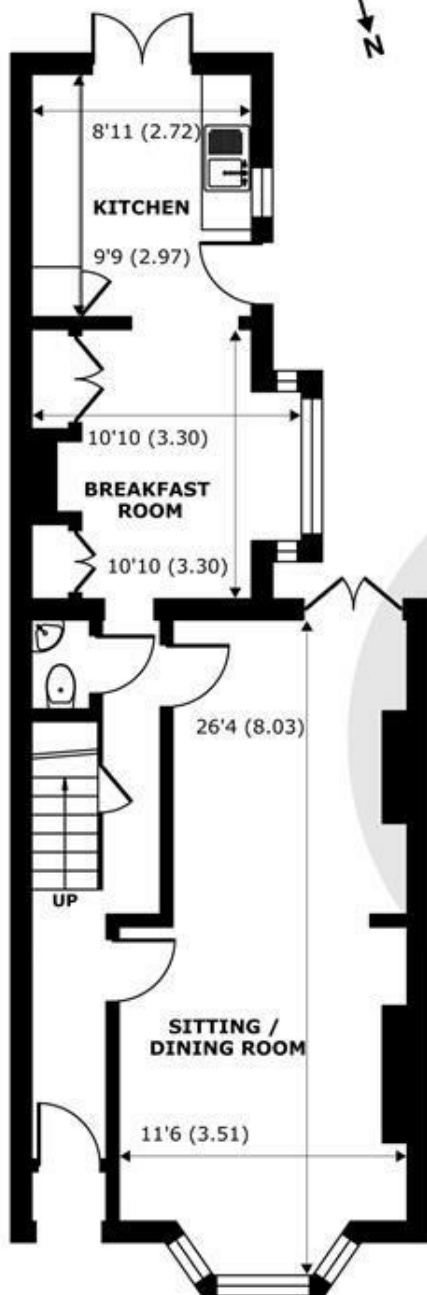
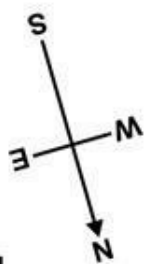
A beautiful double bay period villa located on a prime residential road in the heart of Windsor's town centre, just a short walk to all local amenities. Recently refurbished to provide light, airy and spacious living accommodation the property further benefits from converted loft with en-suite shower room, south facing garden and potential to extend further (stpp).



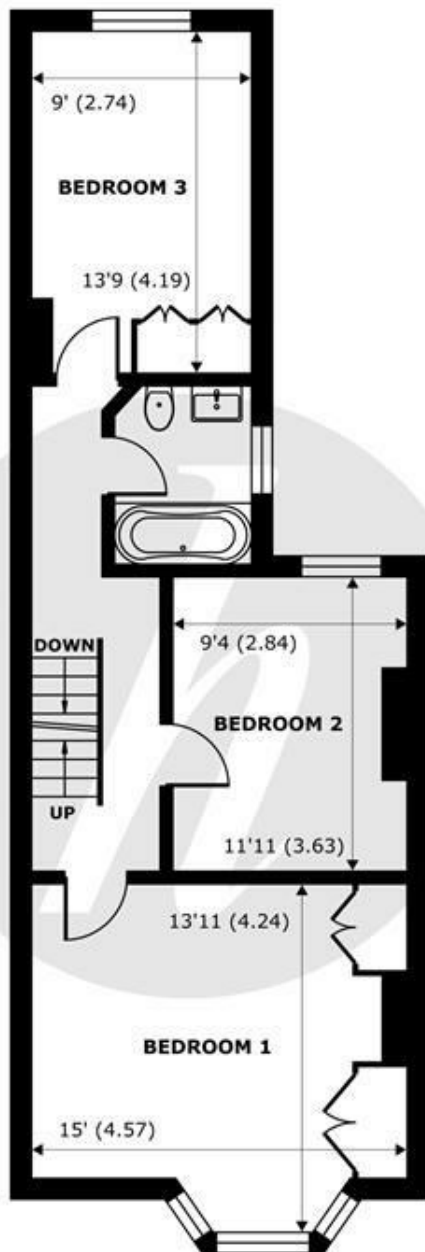
Features

- Freehold Period Villa
- 2 Bathrooms
- Kitchen/Breakfast Room
- Low Maintenance South Facing Garden
- Short Walk to Mainline Rail Links to London
- 4 Double Bedrooms
- Double Reception Room
- Downstairs Cloakroom
- Town Centre Location
- Council Tax Band: G

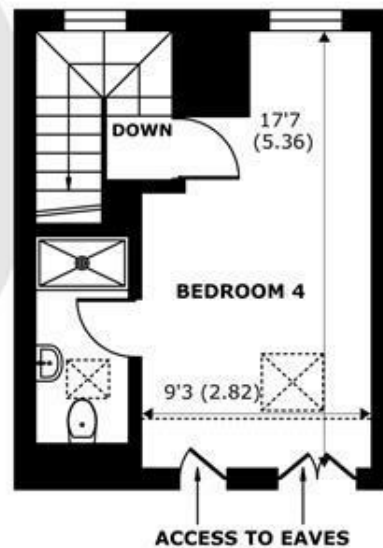
Denotes restricted head height



GROUND FLOOR
abt 692 SQFT (64.2 SQMT)



FIRST FLOOR
abt 677 SQFT (62.8 SQMT)



SECOND FLOOR
abt 292 SQFT (27.1 SQMT)

Queens Road, Windsor, SL4

Approximate Internal Area = 1397 sq ft / 129.7 sq m

Approximate External Area = 1661 sq ft / 154.3 sq m

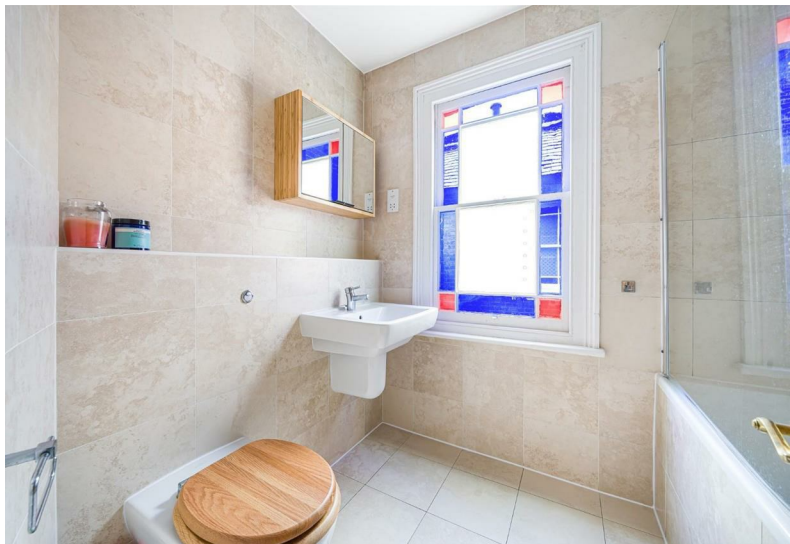
Limited Use Area(s) = 18 sq ft / 1.6 sq m

For identification only - Not to scale



Floor plan produced in accordance with RICS Property Measurement Standards incorporating International Property Measurement Standards (IPMS2 Residential). © nichecom 2023. Produced for Hardings. REF: 968792





11 High Street, Windsor, Berkshire, SL4 1LD,
T: 01753 833 118 | E: info@hardings.co.uk
www.hardings.co.uk

