



# HARDINGS

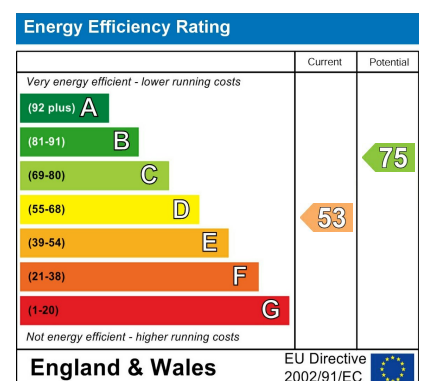


St. Marks Road  
Offers In Excess Of £1,400,000





A beautifully presented 5 bedroom semi-detached period villa, with wonderfully high ceilings and a wealth of period features, located on this popular road just a short walk to the shops, bars, restaurants and mainline British rail links to London (Waterloo & Paddington). Remodelled and extended to create spacious and well designed living space, the property further benefits from south facing garden, utility room, cloakroom and 3 bathrooms (2 x ensuite).



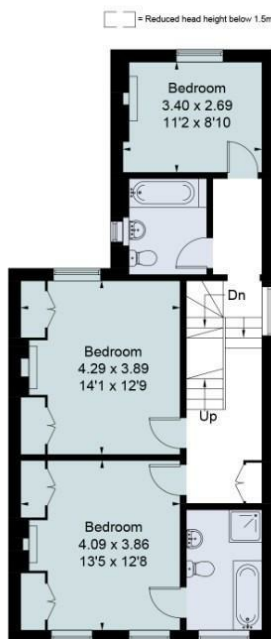
## Features

- 5 Bedroom Period Villa
- Extended Kitchen/Dining Room
- Side Access
- Through Reception Room
- Cloakroom
- Town Centre Location
- South Facing Garden
- High Ceilings & Period Features
- Utility Room
- Council Tax Band: G

Approximate Floor Area = 211.0 sq m / 2272 sq ft



Ground Floor

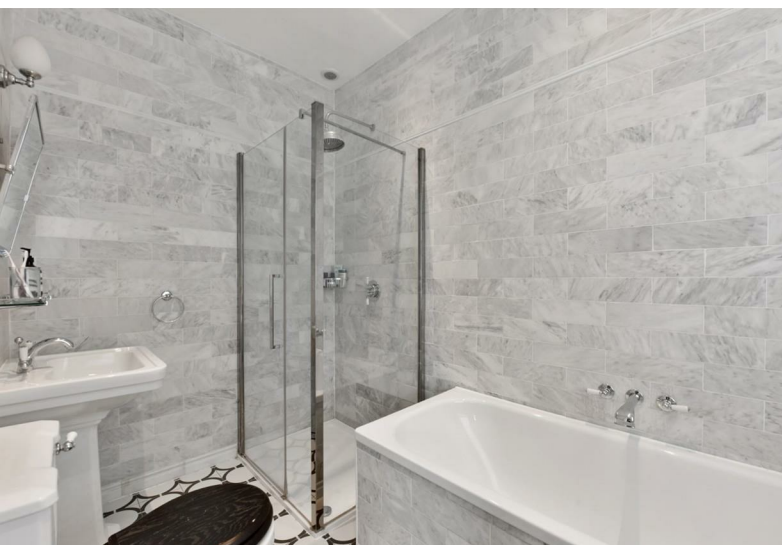
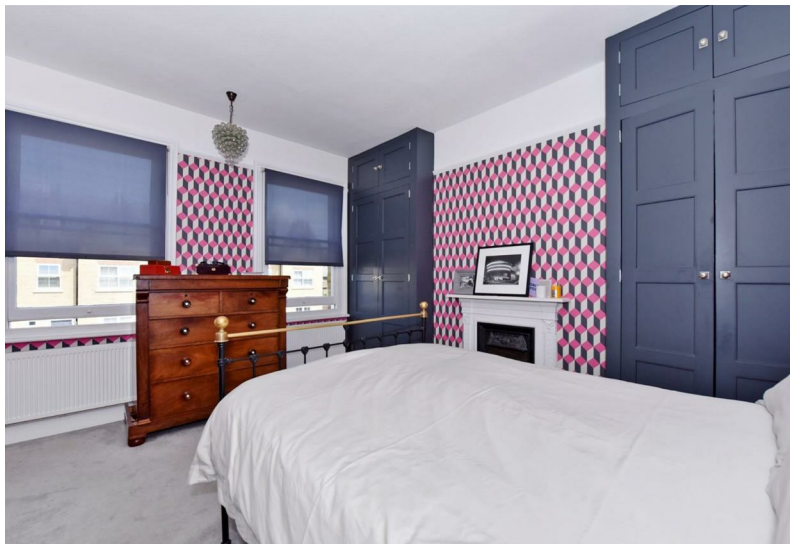


First Floor



Second Floor

Drawn for illustration and identification purposes only by fourwalls-group.com 326541



11 High Street, Windsor, Berkshire, SL4 1LD,  
T: 01753 833 118 | E: [info@hardings.co.uk](mailto:info@hardings.co.uk)  
[www.hardings.co.uk](http://www.hardings.co.uk)

