



HARRISON
Sales &
Lettings
WROTE

Kings Meadow, Bourton-On-The-Water



This three-bedroom, end of terrace house is situated in the popular cul-de-sac, Kings Meadow, close to local amenities and within walking distance of Bourton-on-the-Water Primary School and The Cotswold School. It would make an ideal home for first time buyers or families. There is no onward chain. The ground floor features a bright and spacious living room, a kitchen with ample storage and workspace, and the added benefit of a downstairs cloakroom/WC.

Upstairs, the property boasts three good-sized bedrooms, the principal bedroom benefits from built in storage and a family bathroom, making it ideal for families, first-time buyers.

Outside, the home benefits from two allocated parking spaces and a good-sized rear garden, laid mainly to lawn.

EPC: C

Council Tax Band: C

Tenure: Leasehold

Expiry Date: 24/07/2117

Shared Ownership - Available for sale on a shared ownership basis, this end of terrace house is an ideal choice for those looking to make a step on the property ladder or simply move home. The property is available to purchase at a 50% share minimum and rent is payable to Bromford Housing on the remaining 50%. At the 50% share, the rent payable is £325 per month.

Bourton on the Water is a village situated in the heart of the North Cotswolds. There are a range of amenities, including gift shops, restaurants, pubs, hotels, clothes shops, hairdresser, supermarkets, library, post office, churches, primary and secondary schools. As well as the large range of amenities there are multiple sports club available to join, such as Football, Cricket and Tennis.

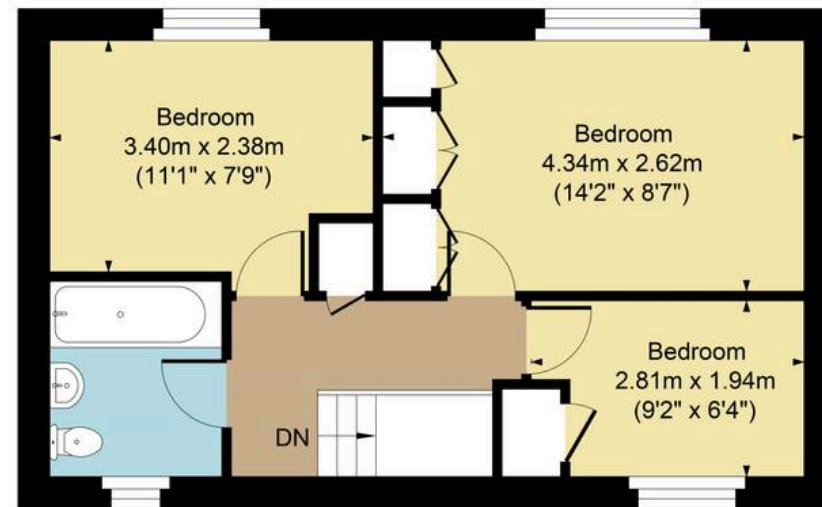




Main House Approx. Gross Internal Area:- 69.78 sq.m. 751 sq.ft.



Ground Floor



First Floor

FOR ILLUSTRATIVE PURPOSES ONLY-NOT TO SCALE

The position & size of doors, windows, appliances and other features are approximate only.

□ □ □ Denotes restricted head height

www.dmlphotography.co.uk