



Bridgeside, Station Road, Bourton-On-The-Water



One-Bedroom Maisonette with Garage, Parking & Garden Access

A well-presented one-bedroom maisonette, accessed via its own private front door and located within walking distance of Bourton-on-the-Water High Street.

The accommodation includes a living/dining room, a fitted kitchen with integrated appliances including a fridge, a double bedroom benefitting from a built-in wardrobe, and a modern bathroom with shower.

Additionally, the property has cavity wall insulation and a new boiler is being fitted imminently.

Outside, the property benefits from an allocated parking space, a single garage, and access to communal gardens.

An ideal opportunity for a first-time buyer, second home, or investment purchase.

EPC: C

Council Tax Band: A

Tenure: Leasehold

Remaining Years: 950 Years

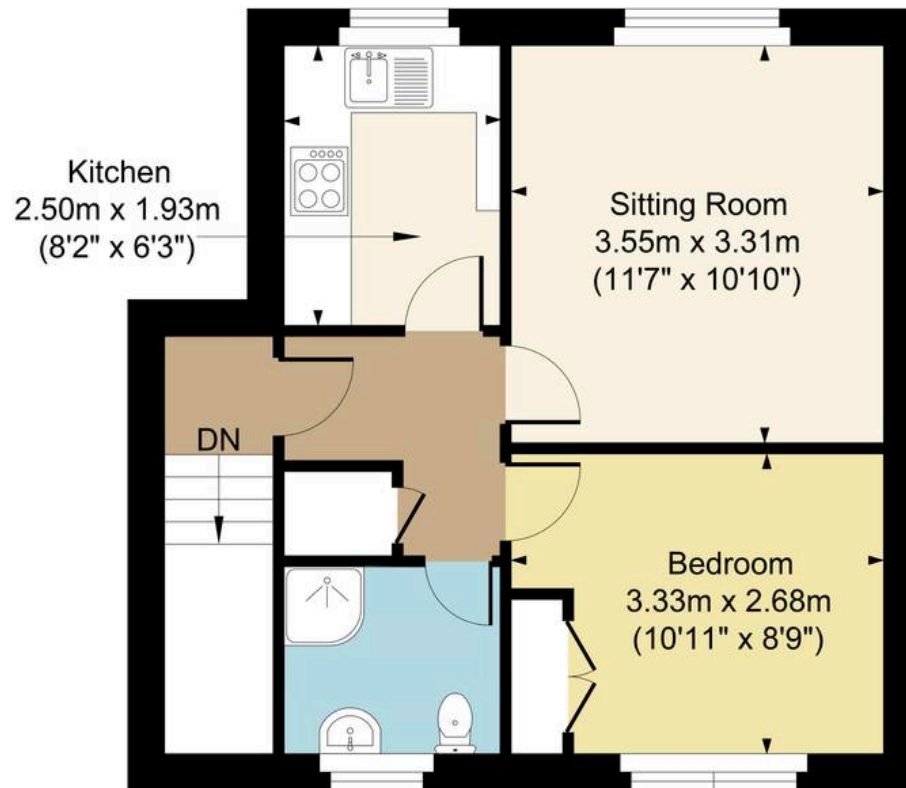
What3Words: ///avid.relishing.hormones

Bourton on the Water is a village situated in the heart of the North Cotswolds - a popular tourist destination, a village of enormous character and appeal, with period Cotswold stone houses and shops flanking the shallow River Windrush that runs through the town centre. There are a range of amenities, including gift shops, restaurants, pubs, hotels, clothes shops, hairdresser, supermarkets, library, post office, churches, primary and secondary schools. As well as the large range of amenities there are multiple sports club available to join, such as Football, Cricket and Tennis.

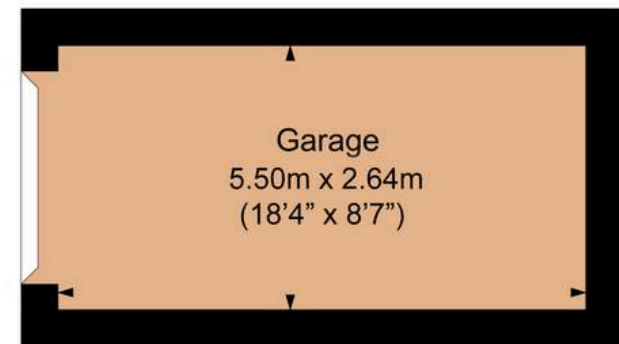




Main House Approx. Gross Internal Area:- 38 sq.m 409 sq.ft
Garage Approx. Gross Area:- 15 sq.m 161 sq.ft
Total Approx. Gross Area:- 53 sq.m 570 sq.ft



First Floor



Garage

FOR ILLUSTRATIVE PURPOSES ONLY-NOT TO SCALE
The position & size of doors, windows, appliances and other features are approximate only.
□ □ □ Denotes restricted head height
www.dmlphotography.co.uk

High Street, Bourton-On-The-Water

Gloucestershire, GL54 2AN

harrisonhardie.co.uk 01451 822977