



HARRISON
Sales &
Lettings
HARDEN

Wright Close, Upper Rissington



Well-Presented Three-Bedroom Terraced Home in Upper Rissington.

Located in the desirable village of Upper Rissington, this well-presented three-bedroom mid-terraced home offers spacious and versatile accommodation, ideal for first-time buyers or investors.

The property opens with a welcoming entrance hall leading into a bright and airy sitting room, enhanced by large front-facing windows, a wood-burning stove, and double doors that open onto the rear garden. The generously sized open-plan kitchen/breakfast room is fitted with a range of wall and base units, providing ample storage and workspace. Adjacent to the kitchen is a useful utility room.

Upstairs, there are three comfortable bedrooms, each with built-in storage, along with a family bathroom and a separate WC—well suited to modern family living.

Externally, the home benefits from enclosed front and rear gardens, including a patio area and lawn ideal for outdoor dining and relaxation. Off-road parking is available, and there is potential for further enhancements (subject to planning permission).

Additional features include gas-fired central heating and double glazing throughout.

EPC Rating: E

Council Tax Band: C

Tenure: Freehold

What3Words: [slides.assurance.registry](https://www.what3words.com/slides.assurance.registry)

Upper Rissington has a fantastic shop, pharmacy, gym and cafe as well as a village hall where many classes and events take place throughout the year. There is also an “outstanding” rated primary school.

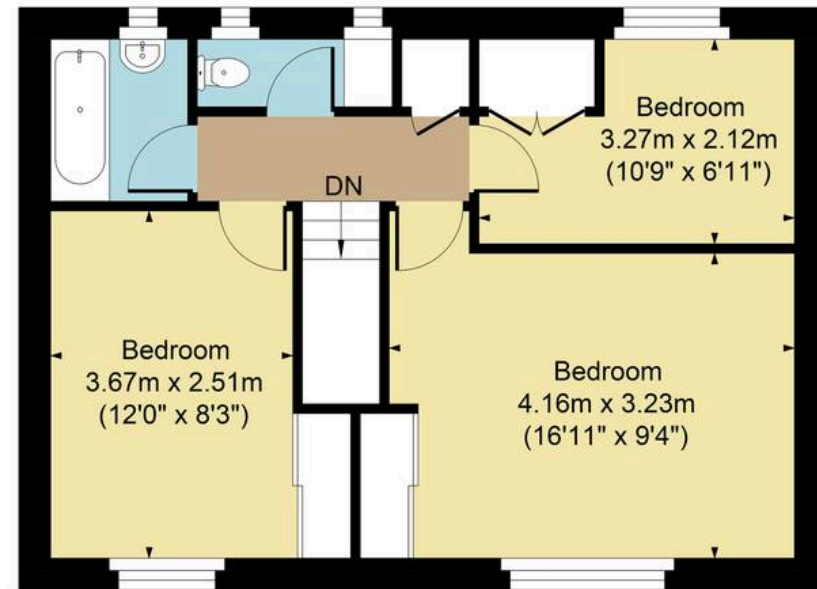




Main House Approx. Gross Internal Area:- 86.34 sq.m. 929 sq.ft.



Ground Floor



First Floor

FOR ILLUSTRATIVE PURPOSES ONLY-NOT TO SCALE

The position & size of doors, windows, appliances and other features are approximate only.

□ □ Denotes restricted head height

www.dmlphotography.co.uk

High Street, Bourton-on-the-Water
Gloucestershire, GL54 2AN

harrisonhardie.co.uk 01451 822977