



HARRISON  
Sales &  
Lettings  
ARDEN

Hawkesbury Place, Fosseway, Stow On The Wold





This ground floor, two-bedroom apartment is situated within Hawkesbury Place, an over-70s retirement development ideally located near the local amenities of Stow-on-the-Wold.

Positioned at the end of the communal hallway, the apartment opens into a spacious entrance hall with ample built-in storage. From here, the hallway leads into a bright and welcoming living room, featuring an electric fire and direct access to the communal gardens via a rear door. The modern kitchen, accessible through the living room, is well-appointed with an integrated oven, hob, under-counter fridge/freezer and dishwasher. Also accessed from the hallway are two generously sized double bedrooms, one of which benefits from built-in storage, and a contemporary shower wet room. Additionally, the water usage is included in the service charge, electric heating throughout, and an allocated parking space for the apartment. There is a good community spirit within the development, where various events are run on a weekly basis in the communal areas, such as the lounge and restaurant.

There is a service charge of £291.98 per week (reviewed annually), this includes: electricity, heating and lighting (communal areas); water and sewage (communal areas and apartments); maintenance of building and gardens; emergency call system; building insurance; income from Guest Suite and sundry income; development staff; future maintenance fund; restaurant; and domestic assistance.

EPC: C

Council Tax Band: E

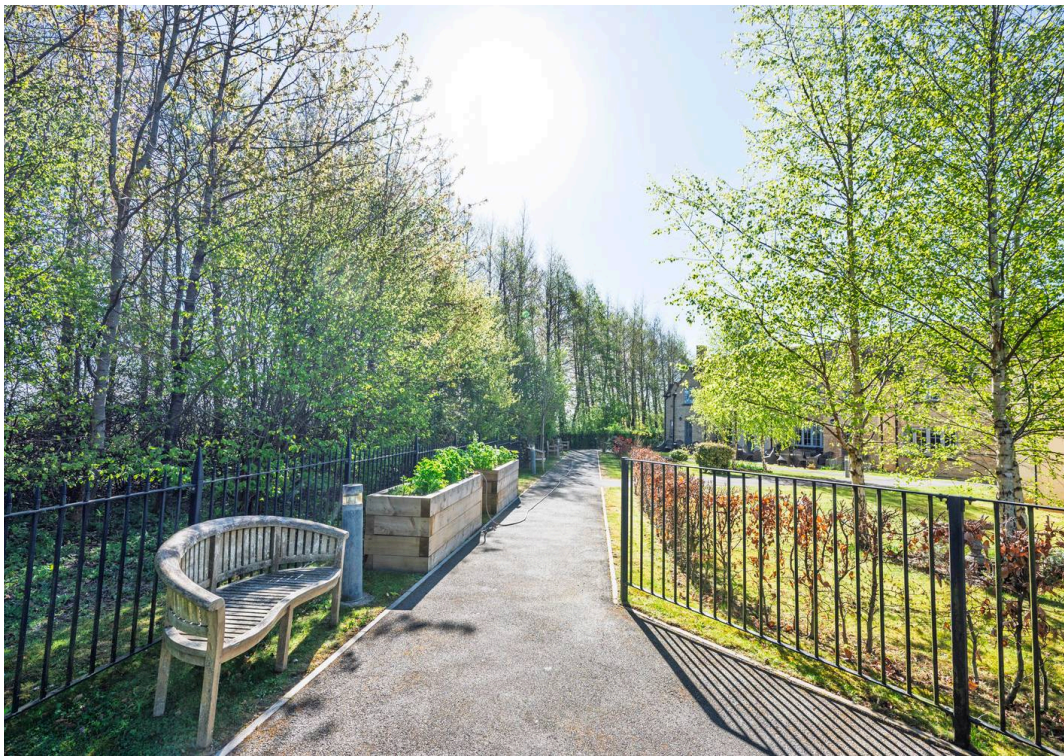
Tenure: Leasehold

Years Remaining: 992 Years

What3Words: compiler.originals.cares

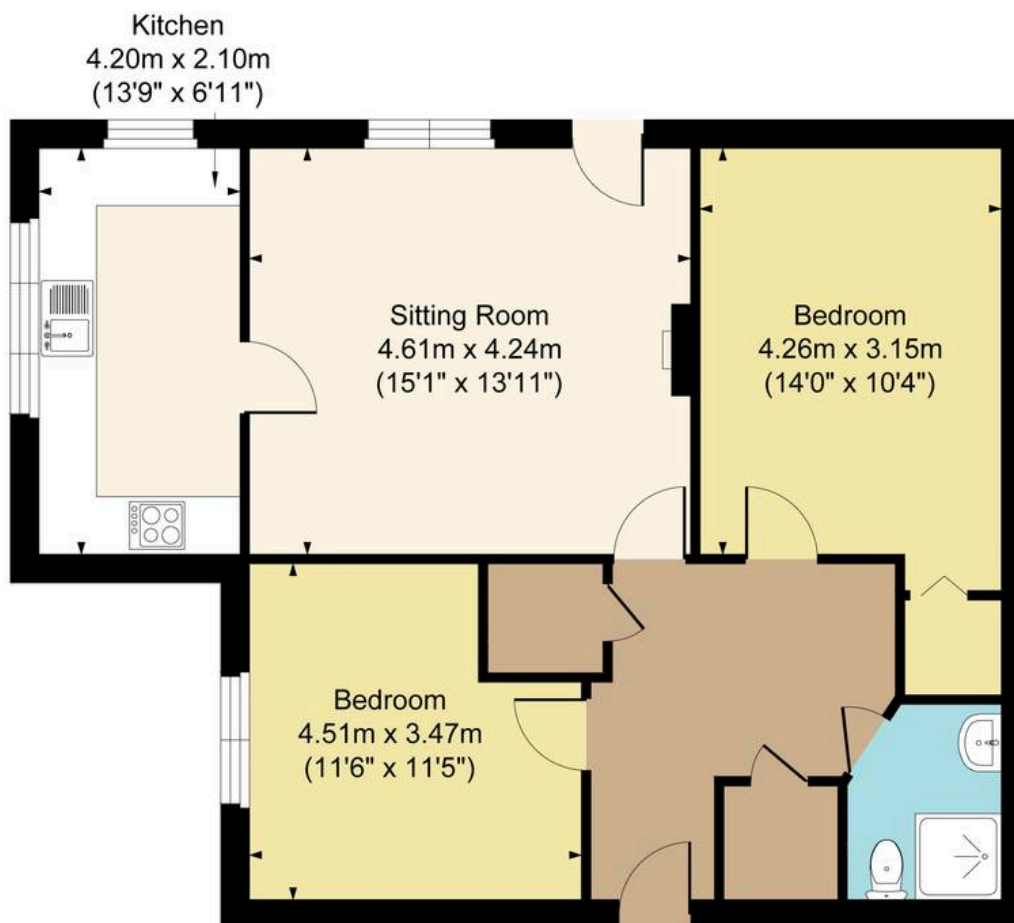









Main House Approx. Gross Internal Area :- 71.02 sq.m. 764 sq.ft.



FOR ILLUSTRATIVE PURPOSES ONLY-NOT TO SCALE

The position & Size of doors, windows, appliances and other features are approximate only.

 Denotes restricted head height

[www.dmlphotography.co.uk](http://www.dmlphotography.co.uk)