



Griffin Close, Stow On The Wold



Tucked away in the small cul-de-sac, Griffin Close, this well-presented four-bedroom home offers flexible accommodation arranged over two floors—ideal for modern family living.

Through the front door, and down the hallway, there is a generously sized living room with a log burner off to the right, through the living room you have access to a bright galley style kitchen. Continuing through the kitchen there is a dining room with ample room for a large dining table, and a conservatory with views across the large, private garden. Finishing off the ground floor there is a dedicated office, which could also provide flexible accommodation as an additional bedroom, and a convenient downstairs cloakroom/WC.

Upstairs, there are four well-proportioned bedrooms, three doubles and one single, the principle bedroom benefits from an en-suite shower room, and the rest of the bedrooms are served by a well sized main bathroom.

Externally, the property benefits from off-road parking for several cars, a garage with direct access into the property, and low maintenance gardens to two sides, offering ample outdoor space and enjoying an open aspect to the rear.

EPC: TBC

Council Tax Band: E

Tenure: Freehold

What3Words: damp.rounds.unopposed

Stow-on-the-Wold enjoys an elevated position in the centre of the north Cotswolds, offering a wide range of individual shops arranged around a central square, with public houses, coffee shops, a library, supermarkets and church. There is a primary school situated on the edge of the town and a wider range of amenities can be found within easy reach, including a main line train station at Moreton in Marsh and Kingham, which have direct lines to London.

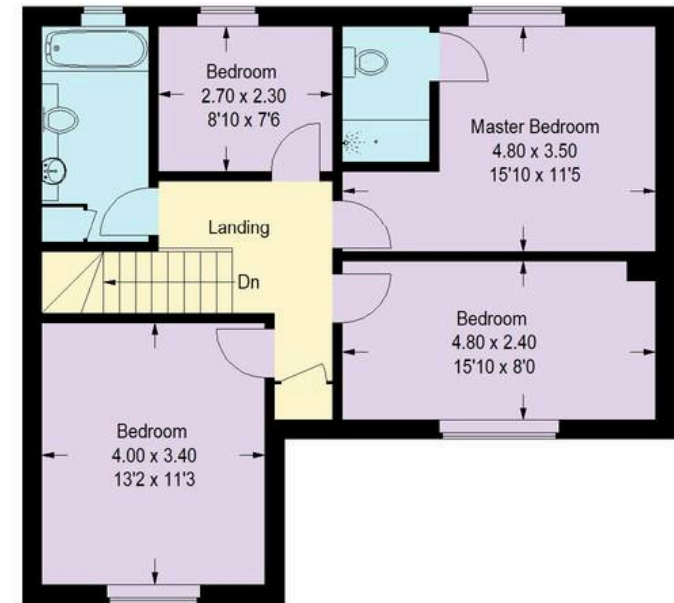




Approximate Gross Internal Area (Including Annexe / Excluding Garage) = 169 sq m / 1819 sq ft
 Garage = 12.4 sq m / 134 sq ft
 Total = 181.4 sq m / 1953 sq ft



Ground Floor



First Floor

Illustration for identification purposes only,
 measurements are approximate, not to scale. (ID756221)