



The Pound, Pound Lane, Little Rissington



Located on a quiet road, in the popular village of Little Rissington, this three bedroom terraced property, offers great potential for first time buyers, families and investors.

Beautifully presented throughout, this property offers bright and spacious open-plan living on the ground floor. Through the hallway, you are greeted by an open plan living area, with under stairs storage, which flows through to the shaker style kitchen with integrated fridge/freezer and oven, and breakfast room, complete with a working wood-burning stove - perfect for both relaxation and entertaining. A convenient downstairs WC completes this level. Upstairs, there are three well-proportioned bedrooms, including two doubles and a single, all served by a family bathroom.

The property also benefits from allotted parking, a garage, and a tiered, private, enclosed garden, consisting of a patio and lawned area, providing an ideal space for outdoor enjoyment.

We understand the property to be Freehold. Potential purchasers should obtain confirmation of this from their solicitor prior to exchange of contracts.

Agents Note: please note some images shown in the listing are stock images.

EPC: D

Council Tax Band: D

Tenure: Freehold

What3Words: skills.fingertip.spinners

Little Rissington lies approximately two miles east of Bourton on the Water and enjoys an elevated position. Further facilities and shopping are offered at nearby Bourton on the Water, as well as Stow on the Wold, and the A40 lies approximately 5 miles away, giving access to routes both east and west.

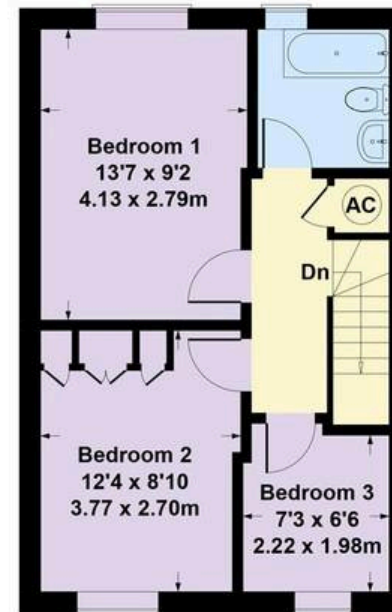




Approximate gross internal area
853 sq ft - 79 sq m



Ground Floor



First Floor

SKETCH PLAN FOR ILLUSTRATIVE PURPOSES ONLY

All measurements walls, doors, windows, fittings and appliances, their sizes and locations, are shown conventionally and are approximate only. They cannot be regarded as being a representation by the seller, his agent, the illustrator or Connor and Company