



Gorse Close, Bourton-On-The-Water

Cheltenham





This three-bedroom detached bungalow with private gardens and views across the neighbouring lakes, is situated within a quiet cul-de-sac, yet still in walking distance to the popular local shops and outstanding schools of Bourton-on-the-Water.

Through the entrance hall and into the hallway, there is a separate toilet directly to the left, continuing along the hallway, there is access to the three bedrooms, two boast built storage, and one has access to the garden room which leads out to the rear garden. Further along the hallway, there is the bathroom, the kitchen and the last door on the right leads through to the L-shaped living room.

There are front and rear gardens.

Additionally the property has a single garage, which can fit one car, and it can be accessed via the house through the garden room. There is also a driveway that can comfortably fit two cars.

EPC: TBC

Council Tax Band: E

Tenure: Freehold

Bourton on the Water is a small town situated in the heart of the North Cotswolds - a popular tourist destination, a town of enormous character and appeal, with period Cotswold stone houses and shops flanking the shallow River Windrush that runs through the village centre. There are a range of amenities, including gift shops, restaurants, pubs, hotels, clothes shops, hairdresser, supermarkets, library, post office, churches, primary and secondary schools. As well as the large range of amenities there are multiple sports club available to join, such as Football, Cricket and Tennis.

What3Words: [acquaint.calculating.potions](#)







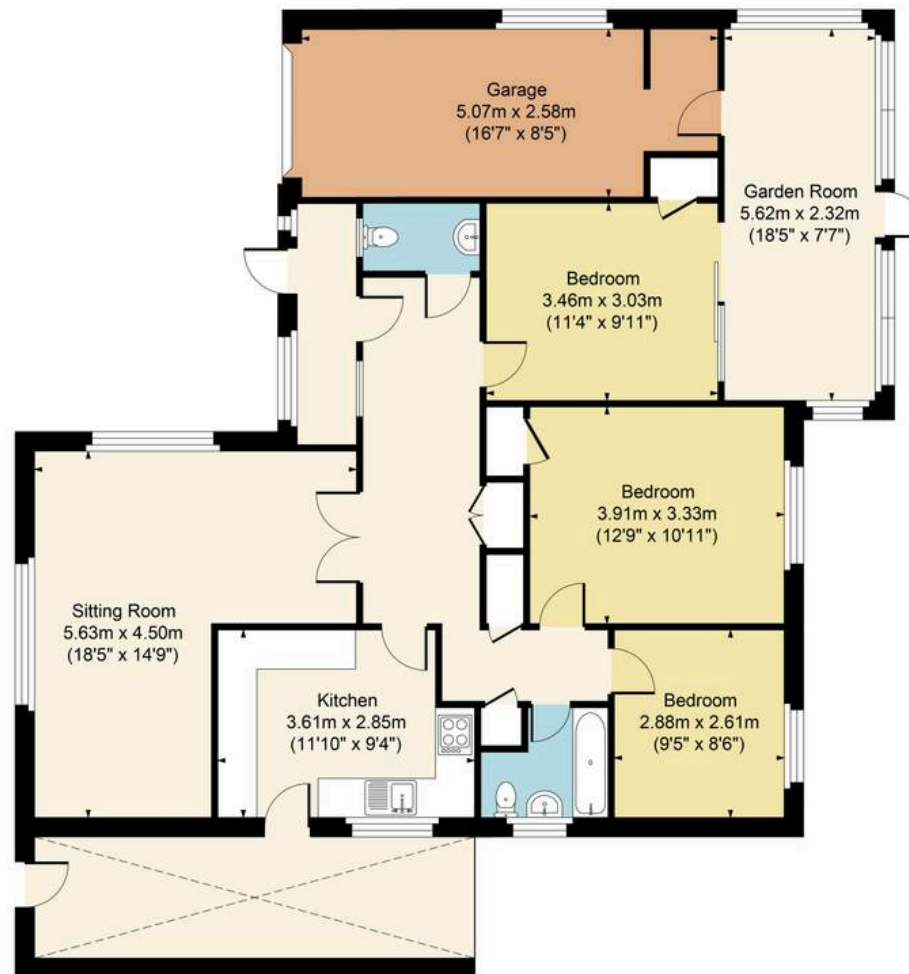


**Gorse Close, Bourton, GL54 2EG**

Main House Approx. Gross Internal Area:- 104.71 sq.m. 1127 sq.ft.

Garage Approx. Gross Area:- 12.28 sq.m. 132 sq.ft.

Total Approx. Gross Area:- 116.99 sq.m. 1259 sq.ft.



Ground Floor

FOR ILLUSTRATIVE PURPOSES ONLY-NOT TO SCALE

The position & size of doors, windows, appliances and other features are approximate only.

□□□ Denotes restricted head height

[www.dmlphotography.co.uk](http://www.dmlphotography.co.uk)

**High Street, Bourton-On-The-Water**

Cheltenham, GL54 2AN

01451 822977 [harrisonhardie.co.uk](http://harrisonhardie.co.uk)